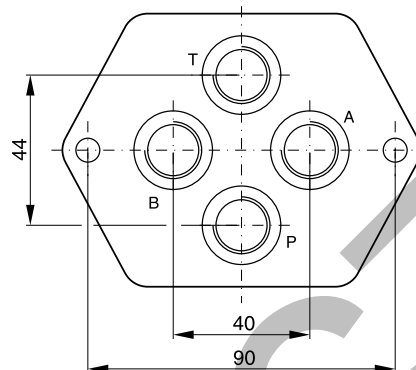
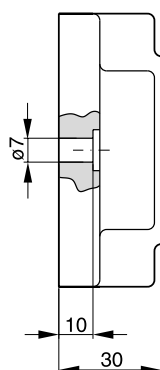
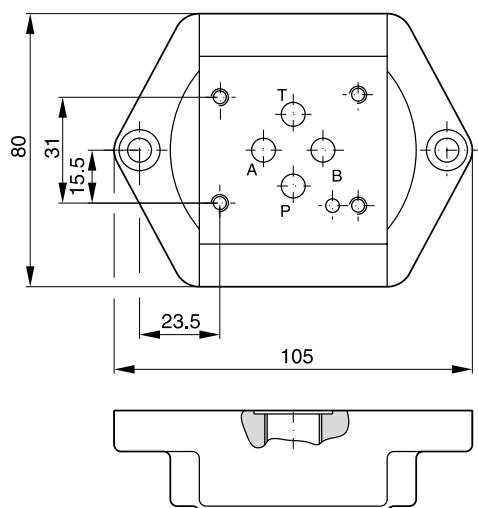
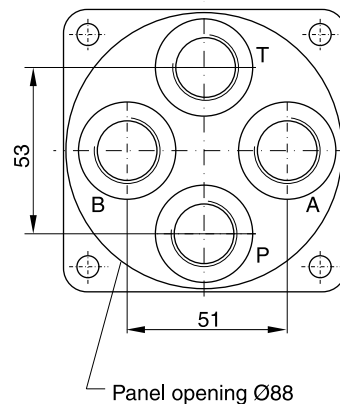
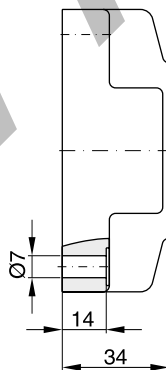
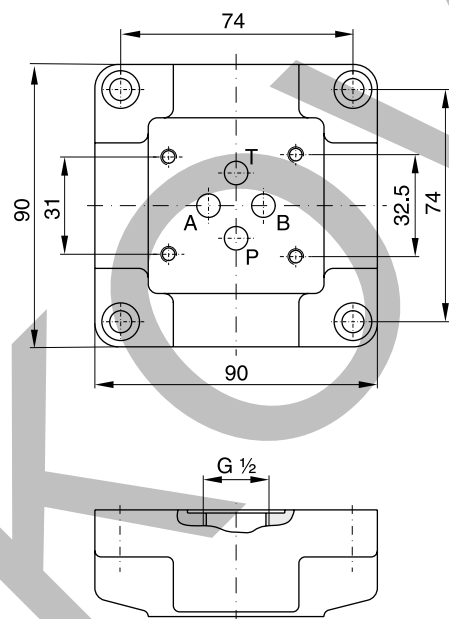


Valve size DIN NG06, CETOP 03, NFPA D03



Ordering code	
SPD 22 B 910	P, A, B and T = G $\frac{1}{4}$
SPD 23 B 910	P, A, B and T = G $\frac{3}{8}$

Valve size DIN NG06, CETOP 03, NFPA D03

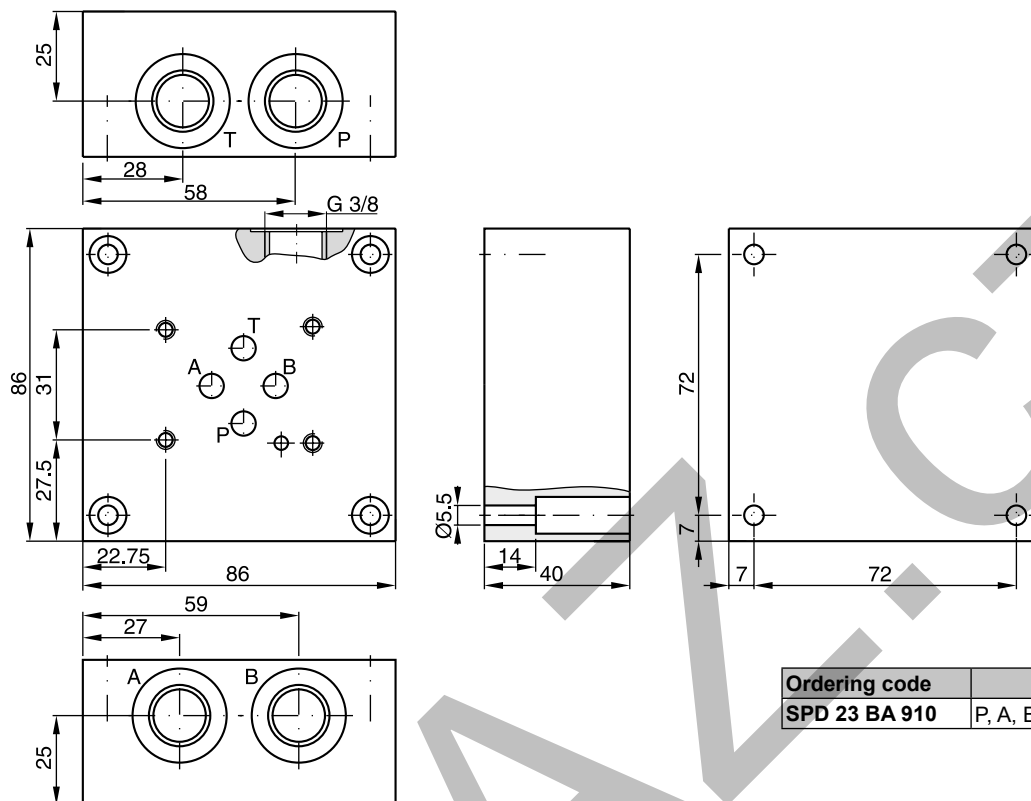


Ordering code	
SPD 24 B 910	P, A, B and T = G $\frac{1}{2}$

Bold letters =
Short-term availability

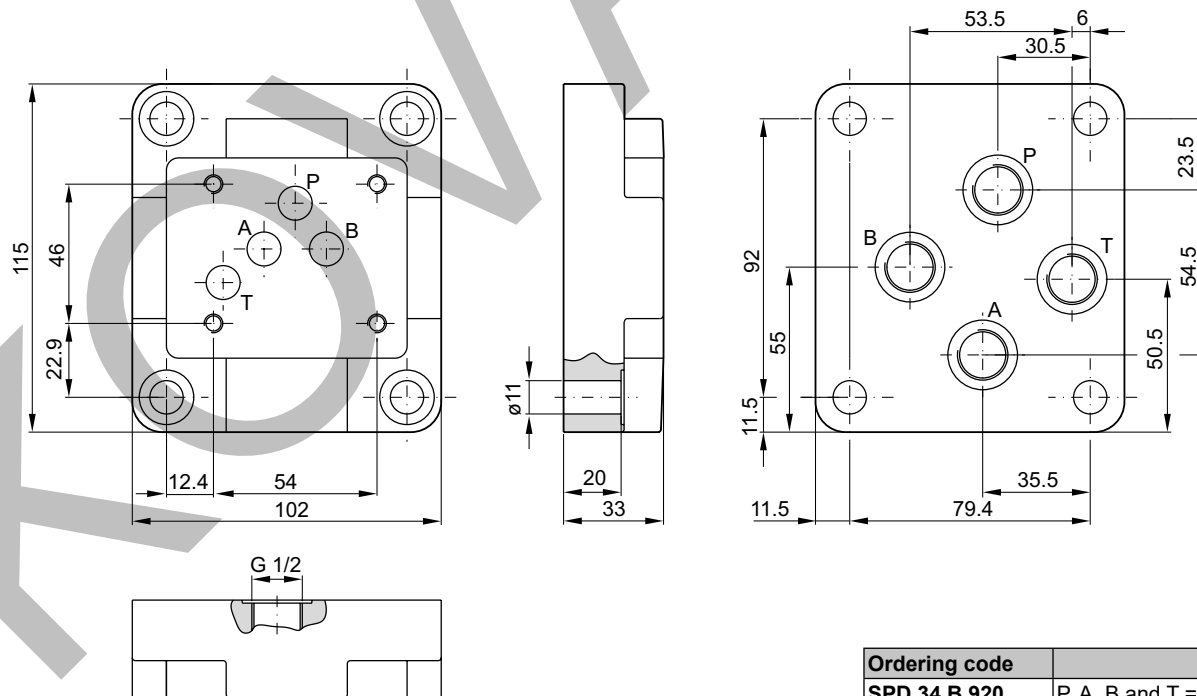


Valve size DIN NG06, CETOP 03, NFPA D03



Ordering code	
SPD 23 BA 910	P, A, B and T = G $\frac{3}{8}$

Valve size DIN NG10, CETOP 05, NFPA D05

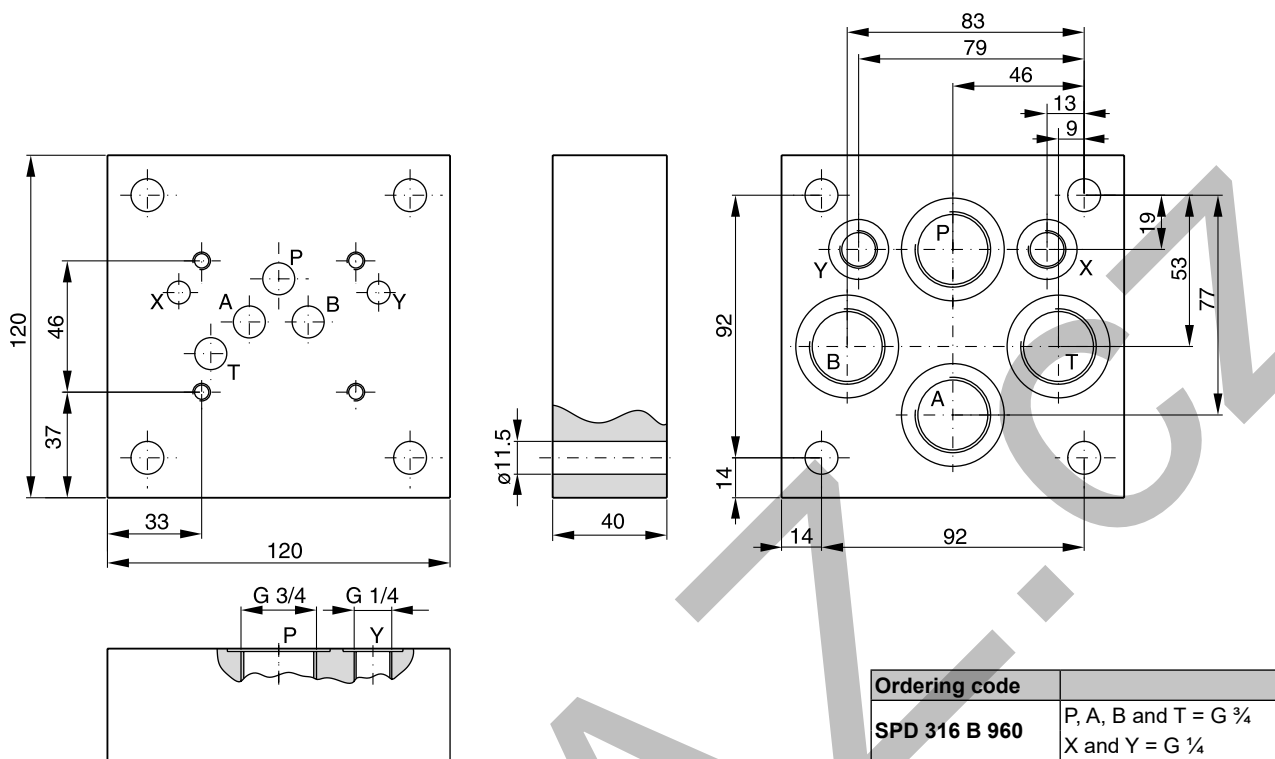


Ordering code	
SPD 34 B 920	P, A, B and T = G $\frac{1}{2}$

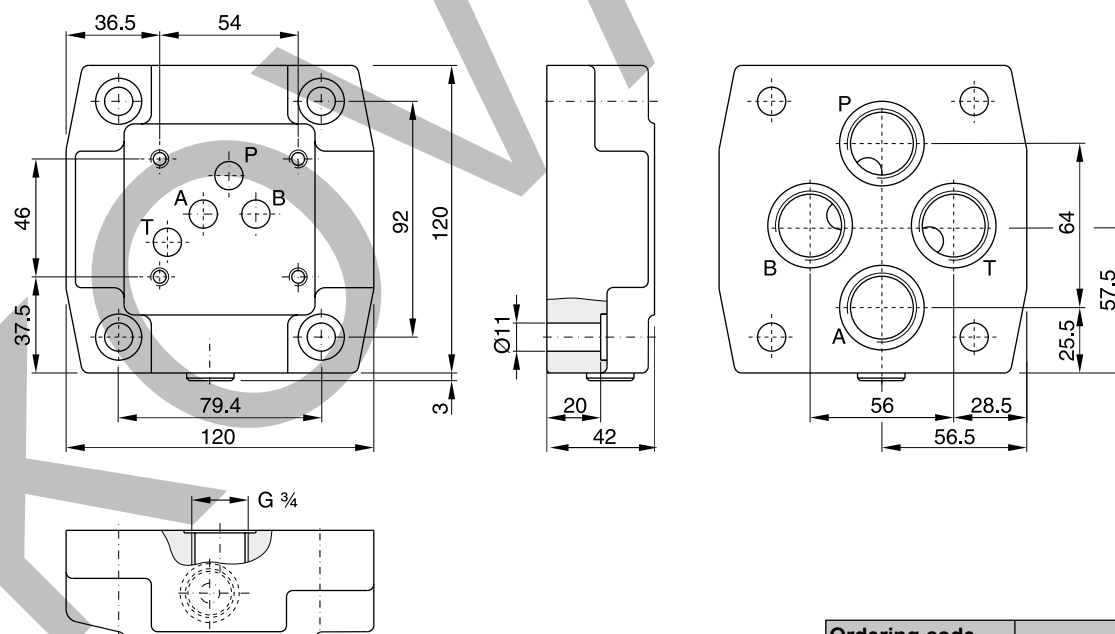
Bold letters =
Short-term availability



Valve size DIN NG10, CETOP 05, NFPA D05

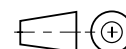


Valve size DIN NG10, CETOP 05, NFPA D05

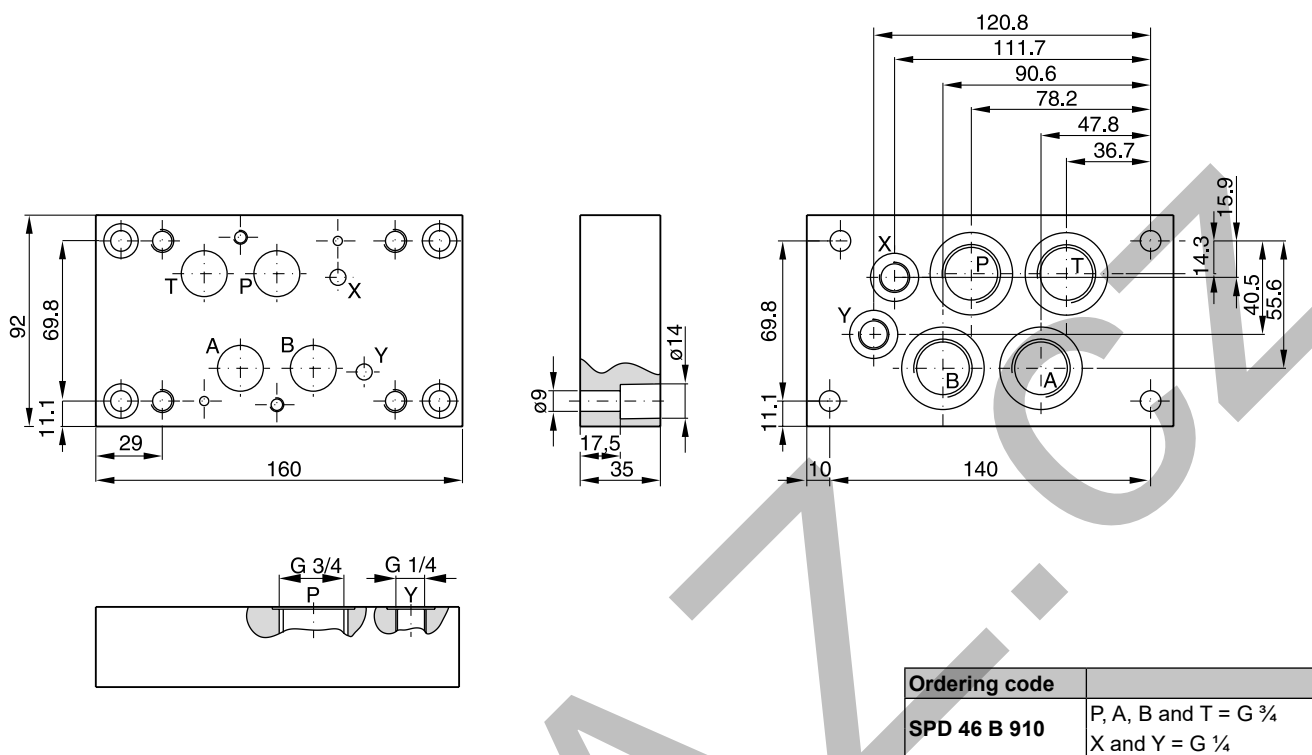


Ordering code	
SPD 36 B 920	P, A, B and T = G 3/4

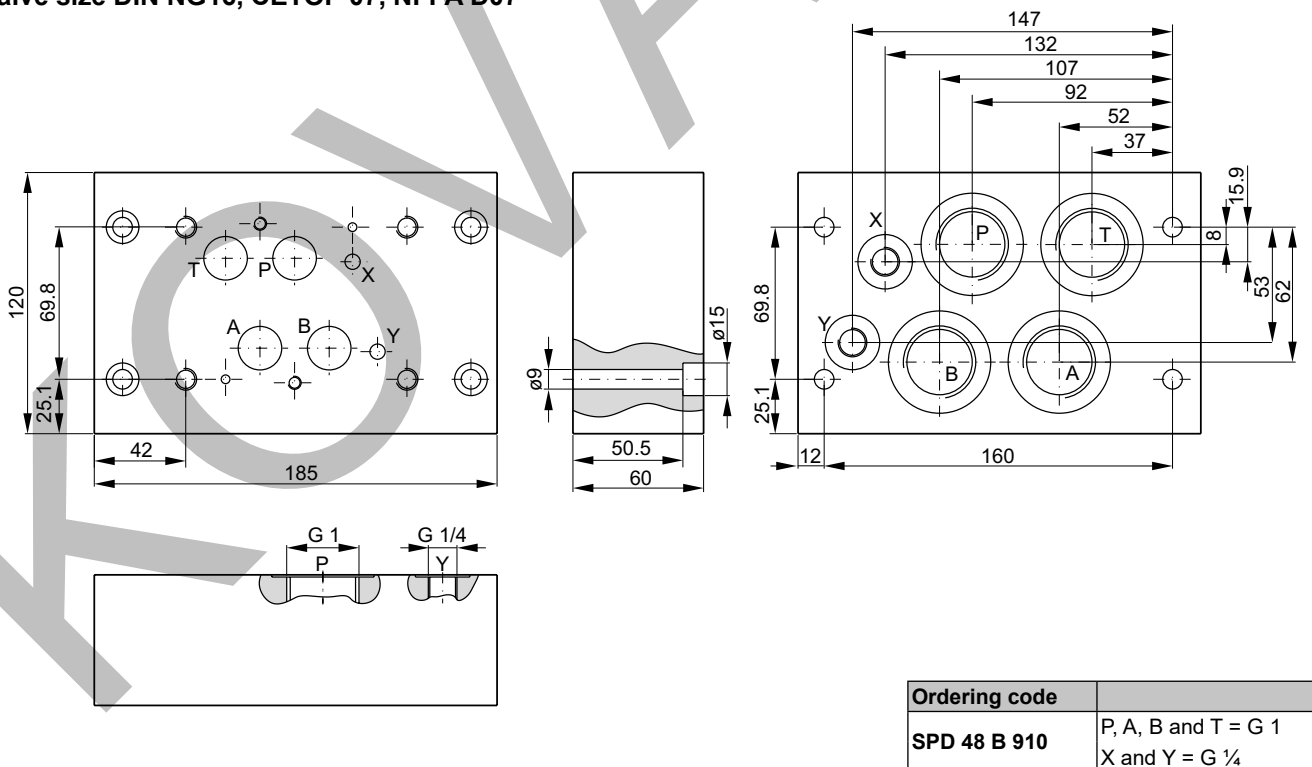
Bold letters =
Short-term availability



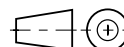
Valve size DIN NG16, CETOP 07, NFPA D07



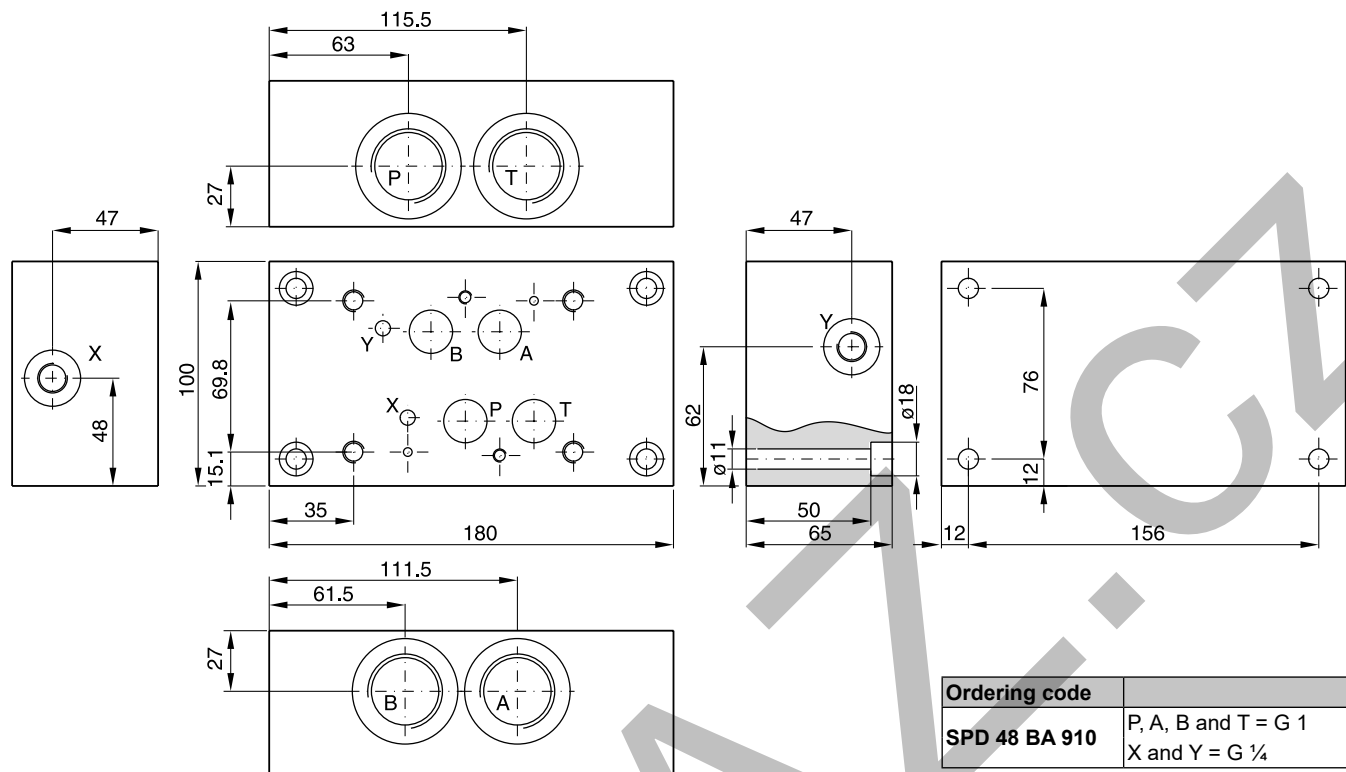
Valve size DIN NG16, CETOP 07, NFPA D07



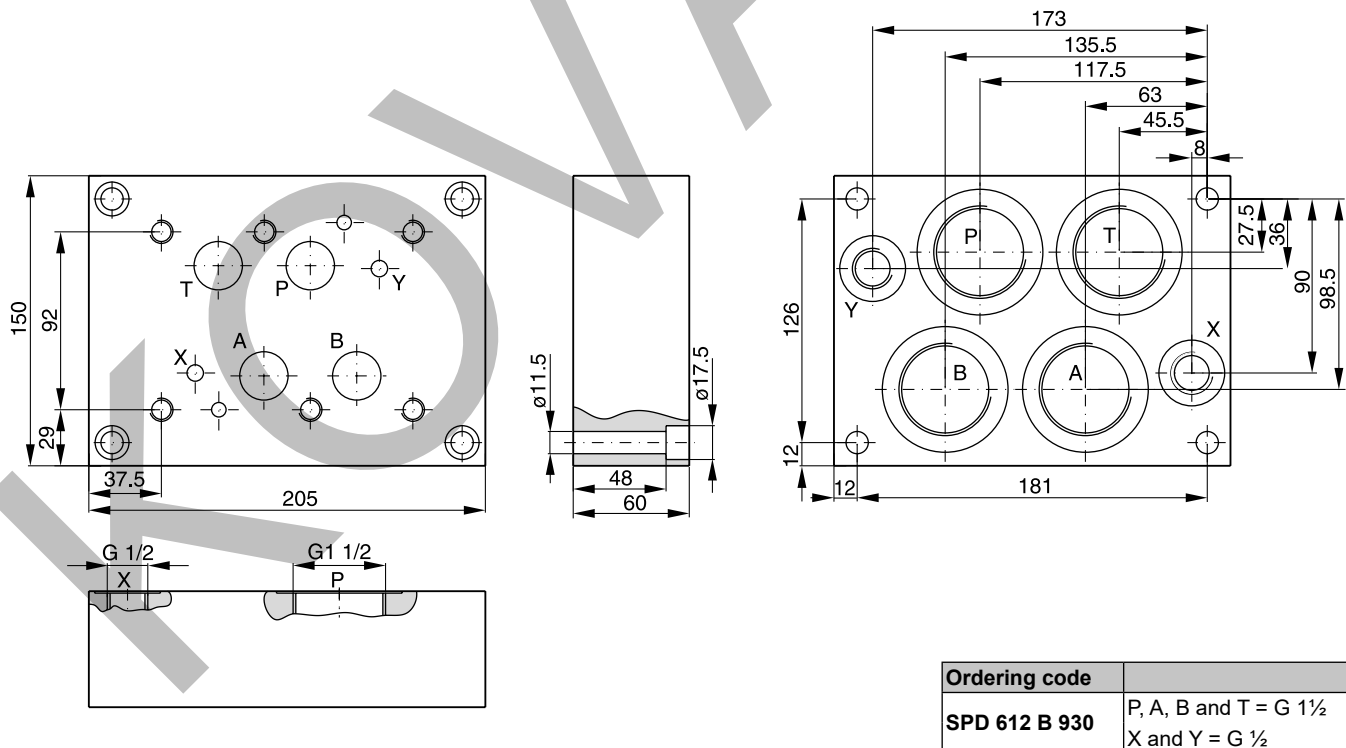
Bold letters =
Short-term availability



Valve size DIN NG16, CETOP 07, NFPA D07



Valve size DIN NG25, CETOP 08, NFPA D08



<p>Bold letters = Short-term availability</p>
--

