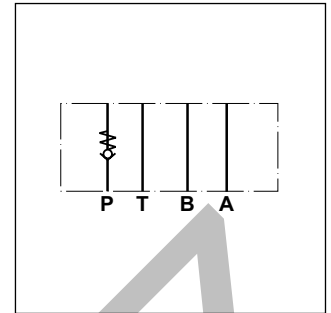


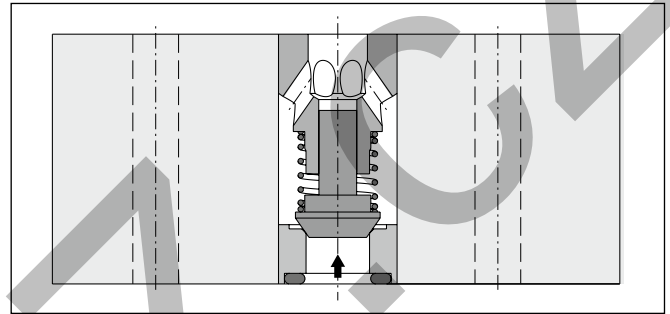
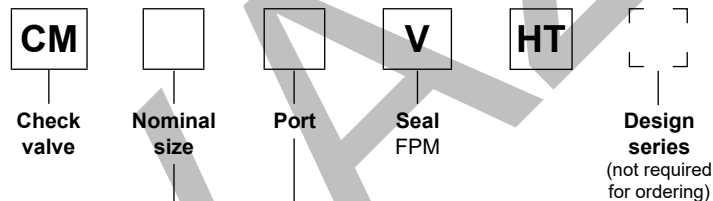
Check valves from the Parker series CM are in sandwich design for easy configuration of stack systems. Depending on the function required, one or two check valves are arranged in ports P, T, A, and B. Number and flow direction can be selected from the ordering code.

Features

- The valve bodies of the Parker valve series CM are made of steel.
- Eight options for the arrangement of the check valve in the body offer a multitude of uses for hydraulic circuits.
- CM2 - NG06 (CETOP 03)
- CM3 - NG10 (CETOP 05)



CM3

**Ordering code**

| Code | Nominal size |
|------|--------------------------------|
| 2 | Intermediate plate DIN NG06 |
| 3 | Intermediate plate DIN NG10 |

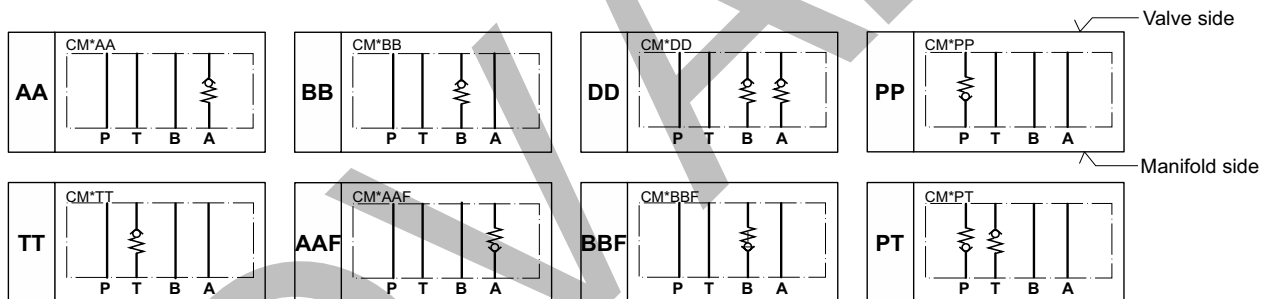
| Code | Free flow polarity | Check valve in channel |
|------|------------------------------------|------------------------|
| AA | From directional valve to manifold | A |
| BB | From directional valve to manifold | B |
| DD | From directional valve to manifold | A and B |
| PP | From manifold to directional valve | P |
| PT | From manifold to directional valve | P and T |
| TT | From directional valve to manifold | T |
| AAF | From manifold to directional valve | A |
| BBF | From manifold to directional valve | B |

Technical data

| General | | | |
|-------------------------|-----------------|--------------------------------------|---------------------------------------|
| Series | | CM2 | CM3 |
| Size | | NG06 | NG10 |
| Mounting interface | | DIN 24340 A6 ISO 4401 NFPA D03 | DIN 24340 A10 ISO 4401 NFPA D05 |
| Mounting position | | unrestricted | |
| Ambient temperature | [°C] | -20...+70 | |
| MTTF _D value | [years] | 150 | |
| Weight | [kg] | 0.7 | 2.0 |
| Hydraulic | | | |
| Max. operating pressure | [bar] | 350 | 350 |
| Max. flow | [l/min] | 60 | 120 |
| Opening pressure | [bar] | 0.5 | 0.5 |
| Fluid | | Hydraulic oil according to DIN 51524 | |
| Fluid temperature | [°C] | -20...+70 | |
| Viscosity, permitted | [cSt] / [mm²/s] | 20...400 | |
| Viscosity, recommended | [cSt] / [mm²/s] | 30...80 | |
| Filtration | | ISO 4406; 18/16/13 | |

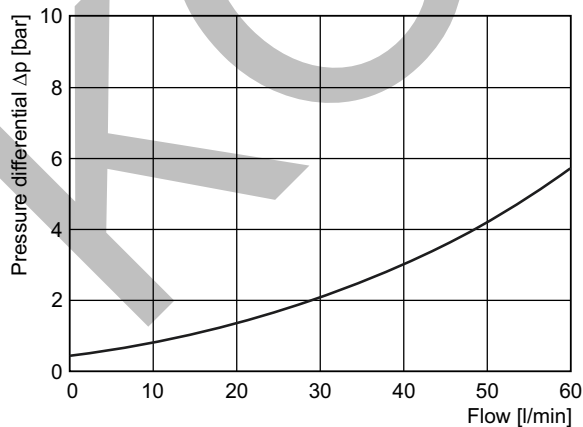
Schematics

The valve side is shown at the top of the symbols, the manifold side with channel designation is shown at the bottom.

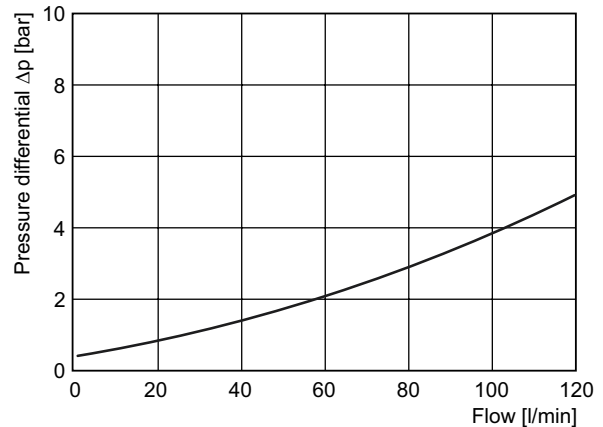


$\Delta p/Q$ performance curves

CM2

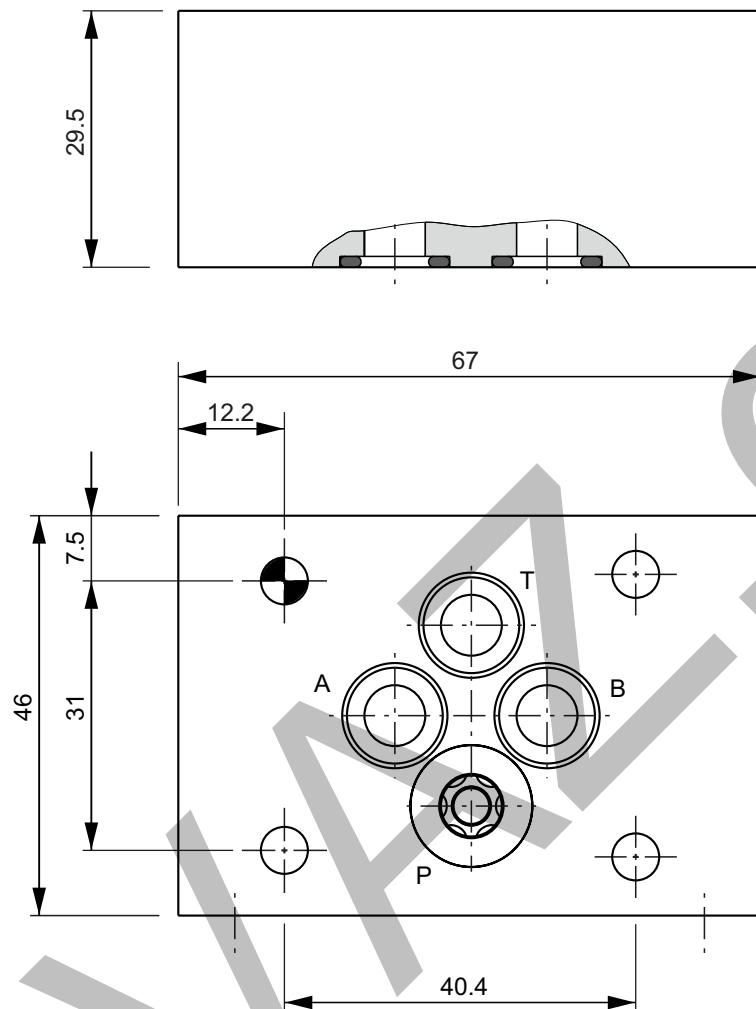


CM3

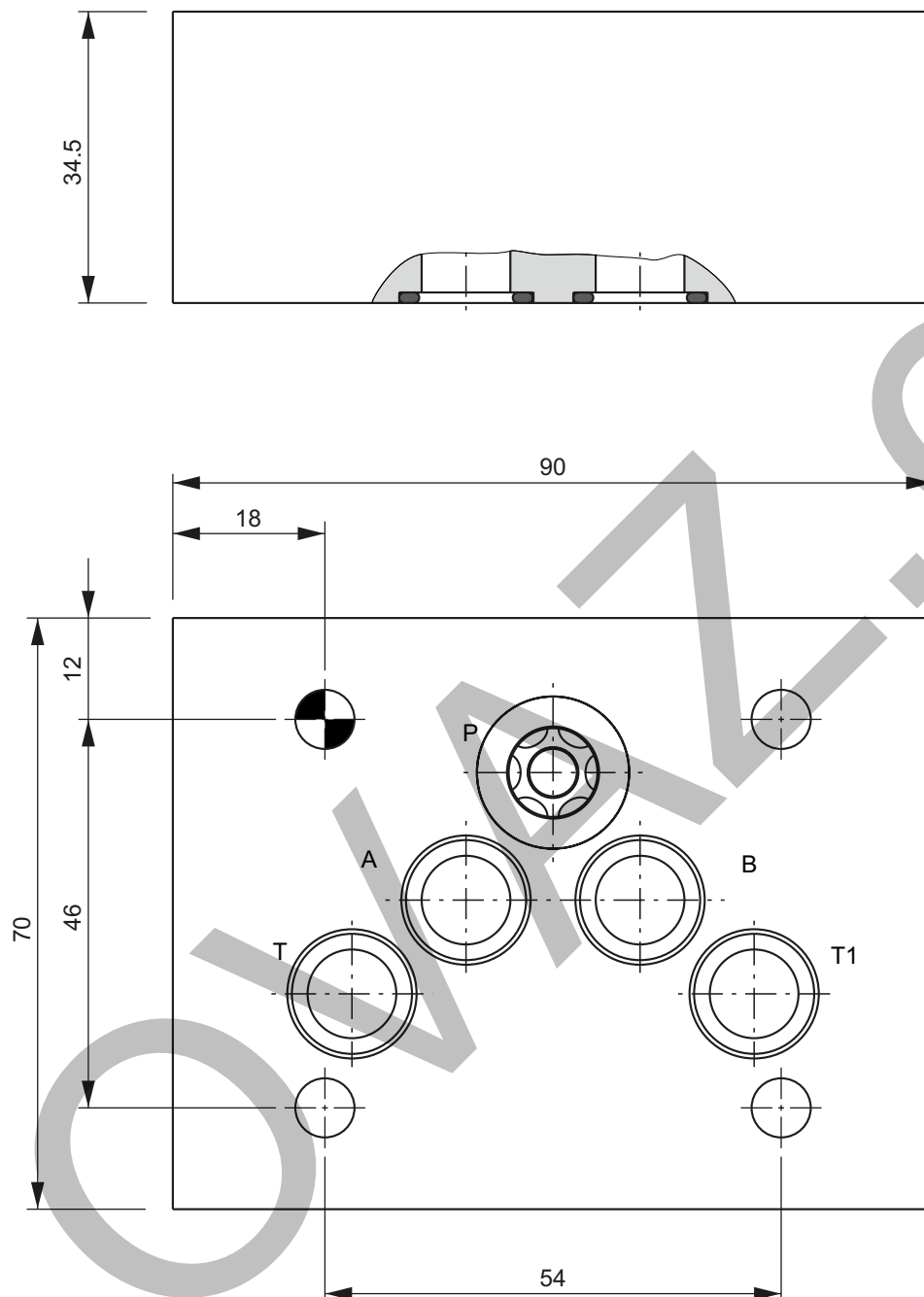


Measured with oil viscosity 33.0 mm²/s (cSt)

CM2



| Seal kit CM2 | |
|--------------|------------|
| Seal | Order code |
| V | SK-CM2-V |

CM3

| Seal kit CM3 | |
|--------------|------------|
| Seal | Order code |
| V | SK-CM3-V |