

Pilot operated relief valve with proportional adjustment. Series VBY*K is a pilot operated pressure valve with external drain.

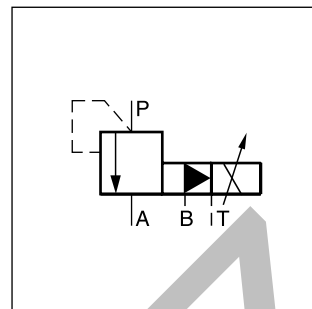
The optimum performance can be achieved in combination with the digital amplifier module PCD00A-400.

Features

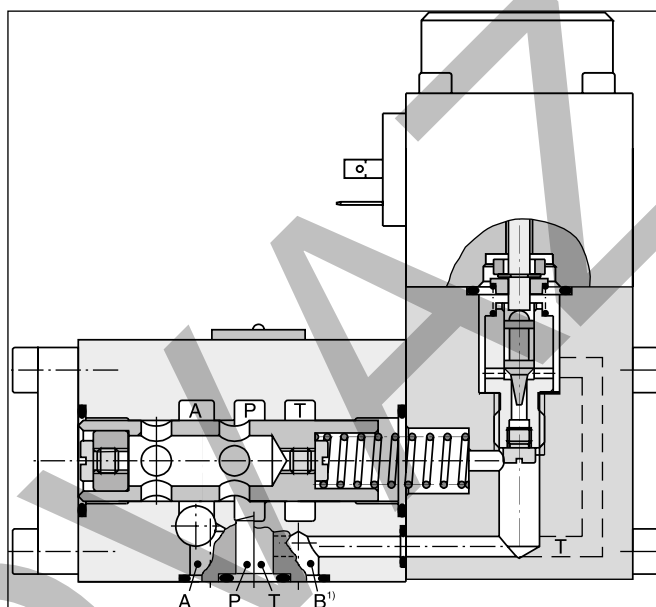
- Proportional adjustment
- Subplate mounting acc. to ISO 5781
- External drain
- Main stage spool type valve
- Pilot stage seated type valve



VBY*K06



VBY*K06

**Ordering code****VBY**

Pressure relief valve



Max. setting range

KProportional solenoid
9 VDC / 2.5 A**06**Nominal size
NG06

Seals

Design series
(not required for ordering)

Code	Max. setting range
064	64 bar
100	100 bar
160	160 bar
210	210 bar
315	315 bar

Code	Seals
N	NBR
V	FPM

**Bold letters =
Short-term availability**

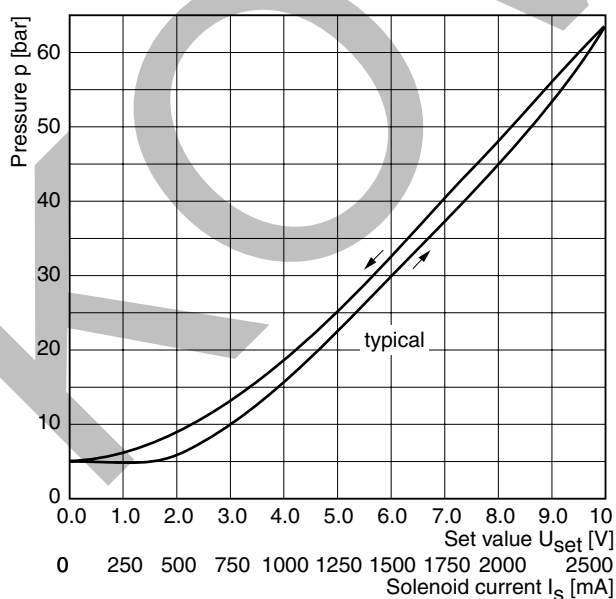
¹⁾ Port B for remote control, otherwise to be blocked.

Technical data

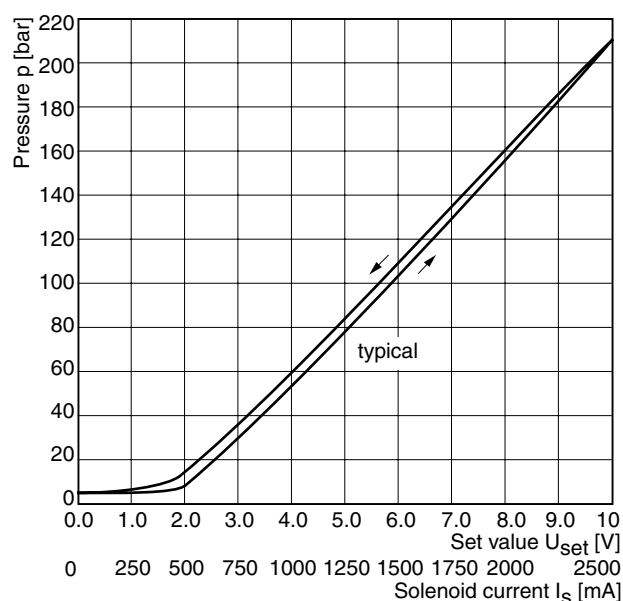
General			
Design		Proportional pressure relief valve	
Nominal size		NG06	
Interface		Subplate mounting according to ISO 5781	
Actuation		Proportional solenoid	
Mounting position		unrestricted	
Ambient temperature		[°C]	-20 ... +60
MTTF _D value		[years]	75
Weight		[kg]	2.4
Hydraulics			
Max. operating pressure		[bar]	P, A: 315, Port B blocked, Port T depressurized
Nominal flow		[l/min]	40
Adjustment range		[bar]	up to 64, 100, 160, 210, 315
Fluid		Hydraulic oil according to DIN 51524	
Viscosity	permitted	[cSt] / [mm²/s]	20 ... 400
	recommended	[cSt] / [mm²/s]	30 ... 80
Fluid temperature		[°C]	-20...+70 (NBR: -25...+70)
Filtration		ISO 4406; 18/16/13	
Linearity		[%]	±3.5 at > 15 % p _{nom} .
Repeatability		[%]	<±2
Hysteresis		[%]	<3
Response time		[ms]	<150
Electrical			
Duty ratio		[%]	100 ED
Protection class		IP65 at EN 60529 (with correctly mounted plug-in connector)	
Nominal voltage		[VDC]	9
Max. current		[A]	2.7
Nom. current		[A]	2.5
Ambient temperature		[°C]	-20...+70
Coil resistance		[Ohm]	2.1 at 20 °C
Solenoid connection		Connector as per EN 175301-803	
Power amplifier		PCD00A-400	

Characteristic pressure curves, $p = f(U_{set})$

Setting range max. 64 bar



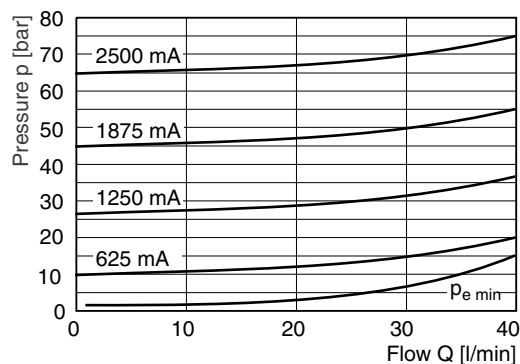
Setting range max. 210 bar



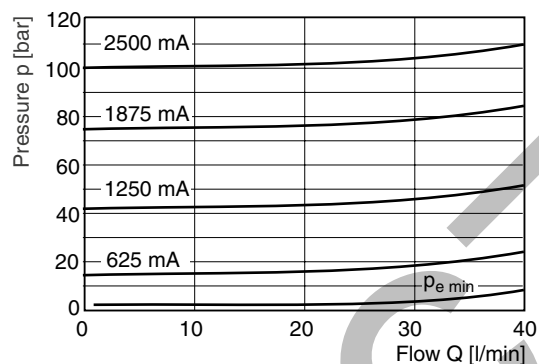
All characteristic curves measured with HLP46 at 50 °C.

P/Q characteristics

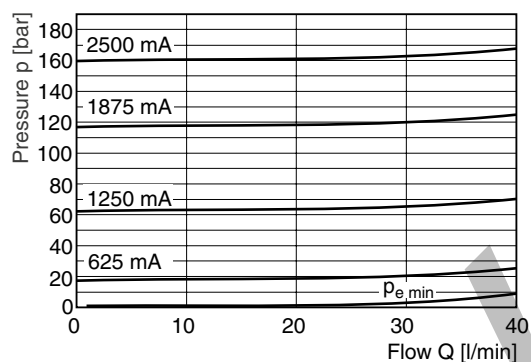
Setting range max. 64 bar



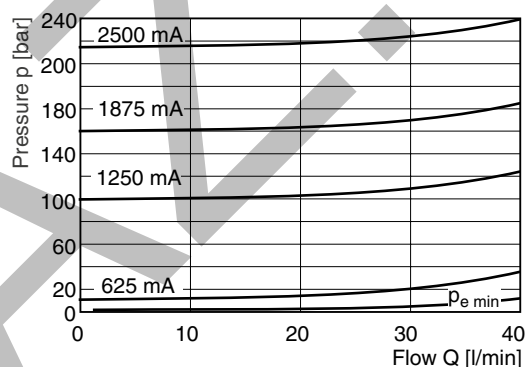
Setting range max. 100 bar



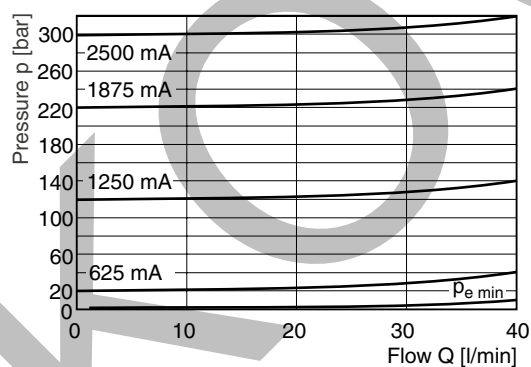
Setting range max. 160 bar



Setting range max. 210 bar

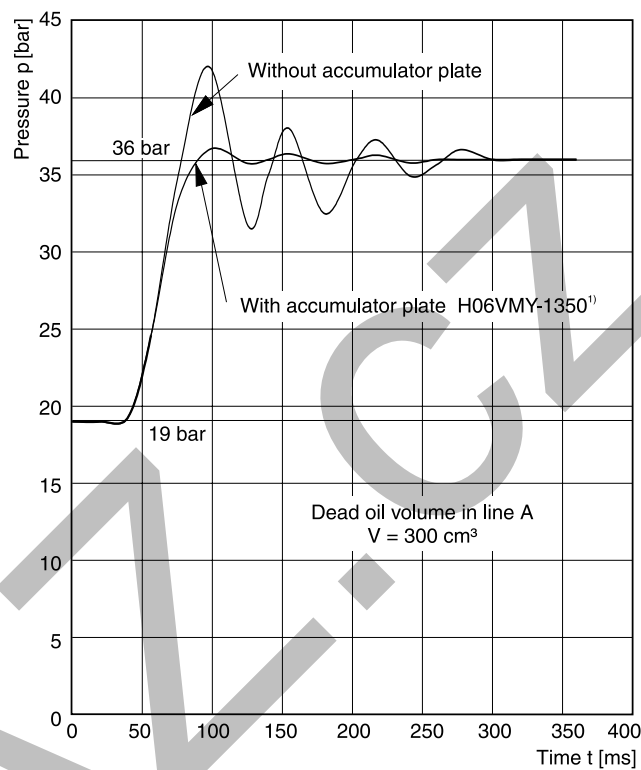
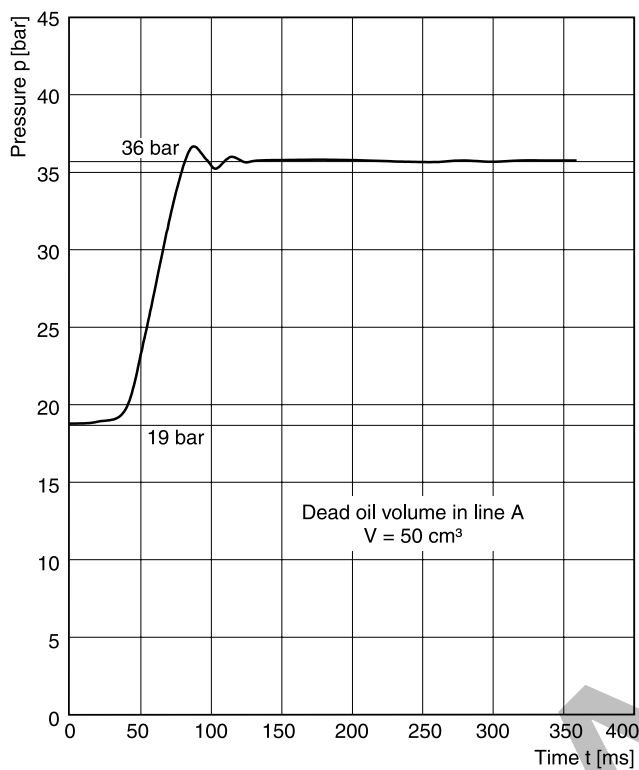


Setting range max. 315 bar



All characteristic curves measured with HLP46 at 50 °C.

Step response signal, setting range max. 210 bar

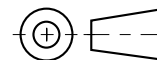
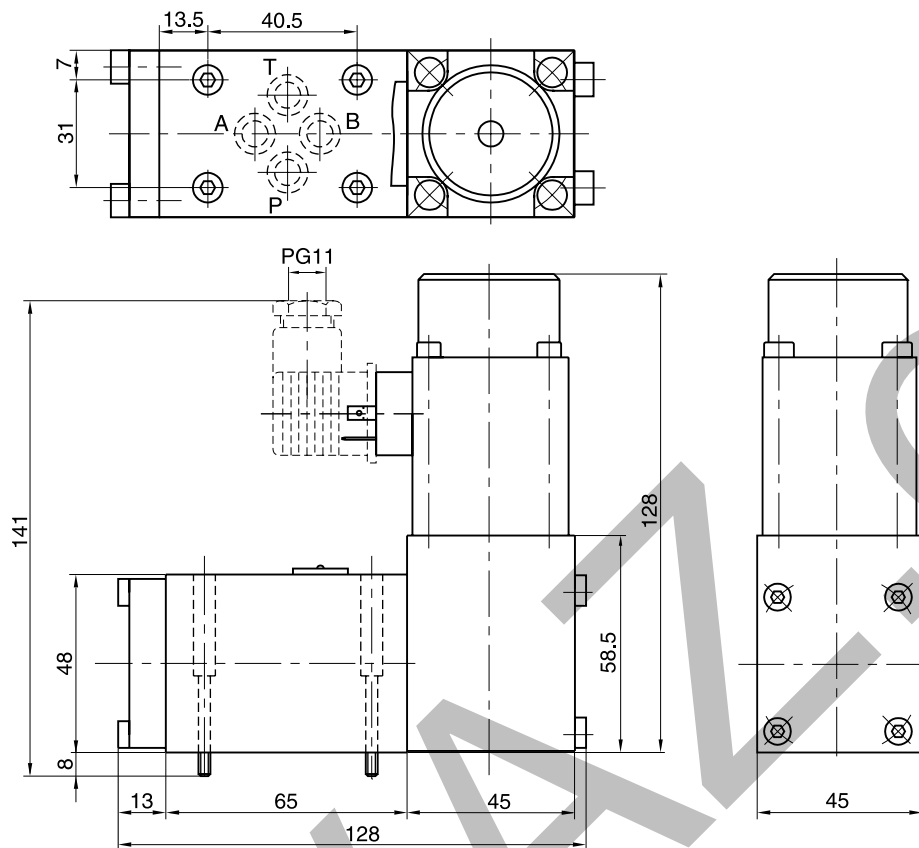


All characteristic curves measured with HLP46 at 50 °C.

¹⁾ See series VMY for details.

VBY_K UK.indd 12.10.22

NG06



Surface finish	Bolt kit			NBR	Kit FPM
$R_{max} 6.3$ $0.01/100$	BK375	4x M5x30 ISO 4762-12.9	7.6 Nm $\pm 15\%$	SK-VMY-L06-N	SK-VMY-L06-V

Mounting pattern ISO 5781-03-04-0-00

