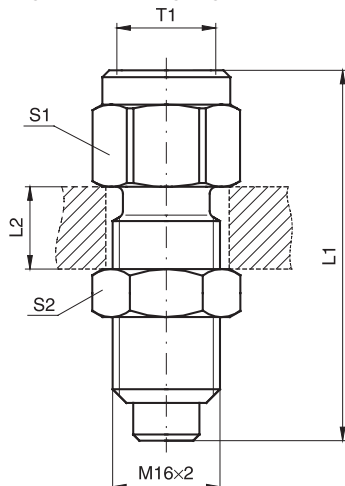
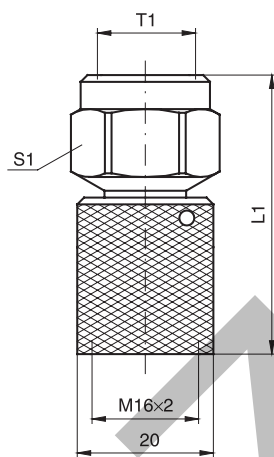


**MAV...MA3** Test point pressure gauge connector with threaded connection M 16×2  
**MAVMD...MA3** Test point with threaded connection M 16×2  
**SMA3** Test point high pressure hose with threaded connection M 16×2 **Series 3**

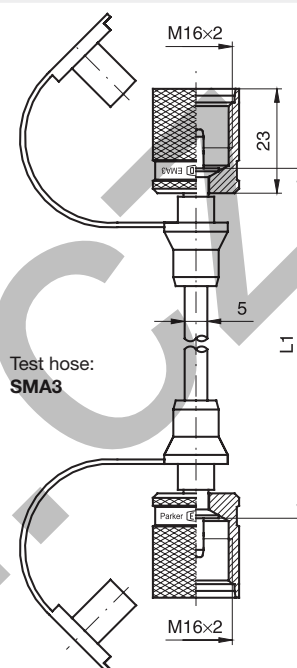
Female thread: BSP  
 Sealing: sealing ring (DIN) EN 837-1\*



Pressure gauge connector:  
**MAV...MA3**



Gauge-Direct-Connector:  
**MAVMD...MA3**



Test hose:  
**SMA3**

T1	L1	L2 max.	S1	S2	Weight g/1 piece	Order code*	PN (bar) <sup>1)</sup> CF	DF**
G 1/4	54.0	12	19	19	74	<b>MAV1/4MA3</b>	630	4.0
G 1/2	64.0	12	27	19	129	<b>MAV1/2MA3</b>	630	4.0
G 1/4	49.0		19		61	<b>MAVMD1/4MA3</b>	630	4.0
G 1/2	51.5		27		103	<b>MAVMD1/2MA3</b>	630	4.0
	200.0				73	<b>SMA3-200</b>	630	2.5
	300.0				74	<b>SMA3-300</b>	630	2.5
	400.0				74	<b>SMA3-400</b>	630	2.5
	630.0				79	<b>SMA3-630</b>	630	2.5
	800.0				83	<b>SMA3-800</b>	630	2.5
	1000.0				87	<b>SMA3-1000</b>	630	2.5
	1500.0				95	<b>SMA3-1500</b>	630	2.5
	2000.0				105	<b>SMA3-2000</b>	630	2.5
	2500.0				110	<b>SMA3-2500</b>	630	2.5
	3200.0				125	<b>SMA3-3200</b>	630	2.5
	4000.0				137	<b>SMA3-4000</b>	630	2.5

\*\*DF = Design Factor

<sup>1)</sup>Pressure shown = item deliverable

$$\frac{\text{PN (bar)}}{10} = \text{PN (MPa)}$$

\*Please add the **suffixes**  
 below according to the material/  
 surface required.

Order code suffixes			
Material	Suffix surface and material	Example	Standard sealing material (no additional suffix needed)
Steel	CF	MAV1/4MA3CF	NBR

\*Sealing rings according to (DIN) EN 837-1 for steel design of copper, for stainless steel design of stainless steel.

**Note hoses with small diameter:**

- Min. bending radius  $r = 20$  mm
- Working temperature  $-20$  °C up to  $100$  °C (short time to  $+120$  °C)
- Hoses are to be protected from fire, from sharp-corners and hot objects.

For measuring with liquid pressure media please note:

Bleed before connecting tube! By capillary action discharge of the pressure medium is prevented widely.

Temperature factor of pressure rating:

up to	0 °C	122 %
for	30 °C	110 %
for	50 °C	100 %
for	80 °C	86 %
for	100 °C	77 %