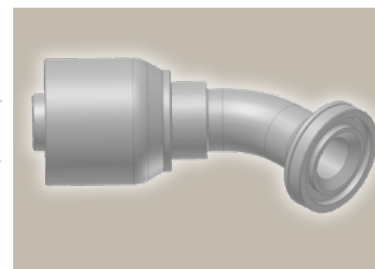
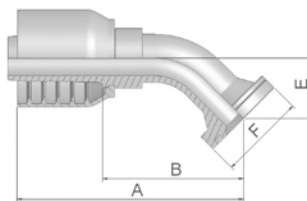


6F ISO 6162-2-Flange 45° Elbow – Heavy Series

ISO 12151-3 – E45-S – SFS 45°
(42.0 MPa/ 6000 psi)



| Part Number | Hose I.D. | | | | Flange | A | B | E | F |
|-------------|-----------|------|------|------|--------|-----|----|----|----|
| | DN | Inch | Size | mm | Inch | mm | mm | mm | mm |
| 16F70-8-8 | 12 | 1/2 | -8 | 12.7 | 1/2 | 81 | 46 | 19 | 32 |
| 16F70-12-8 | 12 | 1/2 | -8 | 12.7 | 3/4 | 90 | 55 | 26 | 41 |
| 16F70-8-10 | 16 | 5/8 | -10 | 15.9 | 1/2 | 92 | 53 | 26 | 32 |
| 16F70-12-10 | 16 | 5/8 | -10 | 15.9 | 3/4 | 92 | 55 | 26 | 41 |
| 16F70-8-12 | 19 | 3/4 | -12 | 19.1 | 1/2 | 94 | 54 | 26 | 32 |
| 16F70-12-12 | 19 | 3/4 | -12 | 19.1 | 3/4 | 105 | 66 | 26 | 41 |
| 16F70-16-12 | 19 | 3/4 | -12 | 19.1 | 1 | 101 | 62 | 26 | 48 |
| 16F70-12-16 | 25 | 1 | -16 | 25.4 | 3/4 | 118 | 73 | 27 | 41 |
| 16F70-16-16 | 25 | 1 | -16 | 25.4 | 1 | 117 | 77 | 27 | 48 |
| 16F70-20-16 | 25 | 1 | -16 | 25.4 | 1 1/4 | 117 | 70 | 31 | 54 |

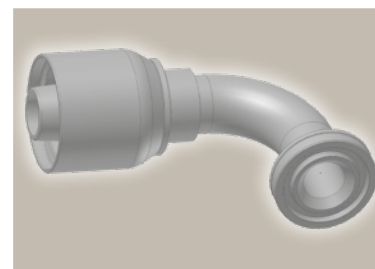
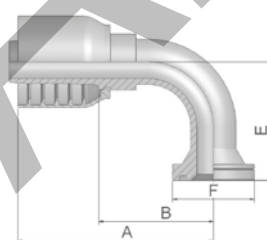
SAE flange halves see in section Eb.

Fittings with standard O-ring seals can be used for temperatures from -40 °C up to +105 °C.

O-rings see section Eb. Special O-rings are available on request.

6N ISO 6162-2-Flange 90° Elbow

ISO 12151-3 – E-S – SFS 90°
(42.0 MPa/ 6000 psi)



| Part Number | Hose I.D. | | | | Flange | A | B | E | F |
|-------------|-----------|------|------|------|--------|-----|----|----|----|
| | DN | Inch | Size | mm | Inch | mm | mm | mm | mm |
| 16N70-8-8 | 12 | 1/2 | -8 | 12.7 | 1/2 | 74 | 39 | 41 | 32 |
| 16N70-12-8 | 12 | 1/2 | -8 | 12.7 | 3/4 | 79 | 44 | 45 | 41 |
| 16N70-8-10 | 16 | 5/8 | -10 | 15.9 | 1/2 | 95 | 56 | 54 | 32 |
| 16N70-12-10 | 16 | 5/8 | -10 | 15.9 | 3/4 | 92 | 55 | 54 | 41 |
| 16N70-16-10 | 16 | 5/8 | -10 | 15.9 | 1 | 86 | 46 | 54 | 48 |
| 16N70-8-12 | 19 | 3/4 | -12 | 19.1 | 1/2 | 81 | 42 | 54 | 32 |
| 16N70-12-12 | 19 | 3/4 | -12 | 19.1 | 3/4 | 98 | 58 | 54 | 41 |
| 16N70-16-12 | 19 | 3/4 | -12 | 19.1 | 1 | 92 | 53 | 53 | 48 |
| 16N70-12-16 | 25 | 1 | -16 | 25.4 | 3/4 | 113 | 66 | 57 | 41 |
| 16N70-16-16 | 25 | 1 | -16 | 25.4 | 1 | 111 | 64 | 70 | 48 |
| 16N70-20-16 | 25 | 1 | -16 | 25.4 | 1 1/4 | 115 | 68 | 68 | 54 |

SAE flange halves see in section Eb.

Fittings with standard O-ring seals can be used for temperatures from -40 °C up to +105 °C.

O-rings see section Eb. Special O-rings are available on request.

Approved **fitting series** for **hose types**, depending on size:

70 371LT 372 372RH 372TC 701 701 TC F42-8