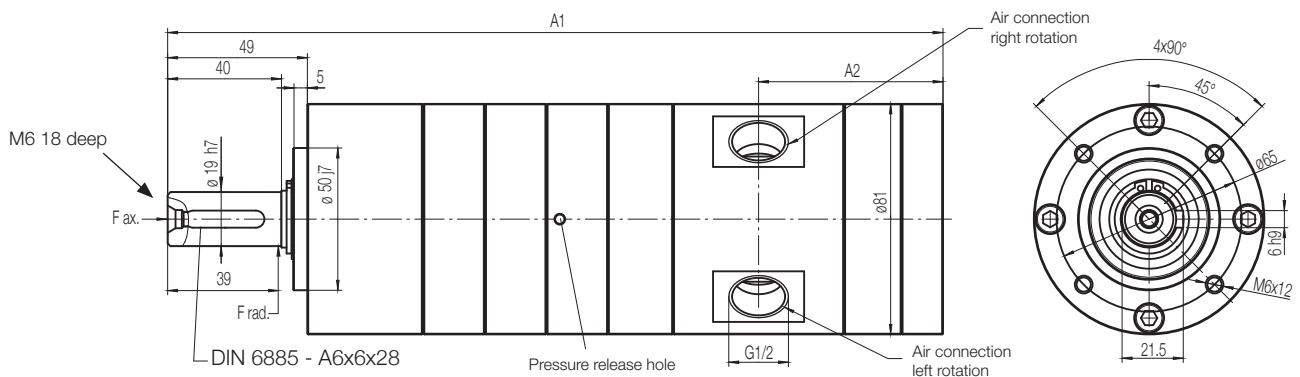


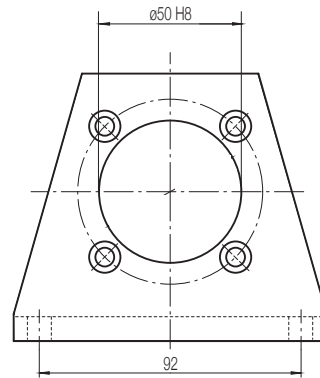
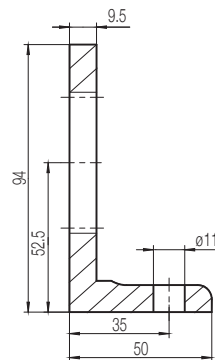
Dimensions (mm)

Motor P1V-M090C



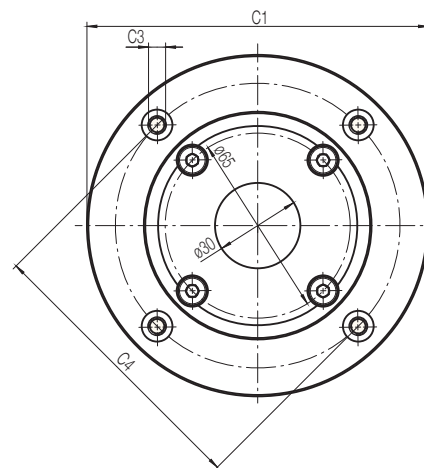
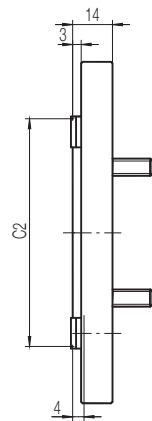
Motors have 2 or 3 openings at the outside of the gearbox which must stay open in order to guarantee troublefree operation.

**Foot bracket
P1V-MF5**



Flanges

P1V-MF6, P1V-MF7



Motor size				Dimensions (mm)	
				A1	A2
900 watts	P1V-M090C0245	P1V-M090C0156		209	55
	P1V-M090C0058	P1V-M090C0036	P1V-M090C0023	231	55
	P1V-M090C0013	P1V-M090C0009	P1V-M090C0004	252.5	55

Motor type		Dimensions (mm)			
		C1	C2	C3	C4
P1V-M090C	(IEC80 B5) P1V-MF7	200	130f7	11	165
	(IEC80 B14) P1V-MF6	120	80f7	M6	100