


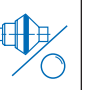


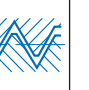
 max.	 -20°C +200°C	 FKM (Viton™)	 Manual	 Flat-faced poppet	 -	 Ball locking mechanism	 BSPP, Metric
Inter-changeable with similar models	Brass and Stainless steel	1/4"	6.0 MPa	-20°C +200°C	FKM (Viton™)	Manual	Flat-faced poppet	-	Ball locking mechanism	BSPP, Metric

Main characteristics

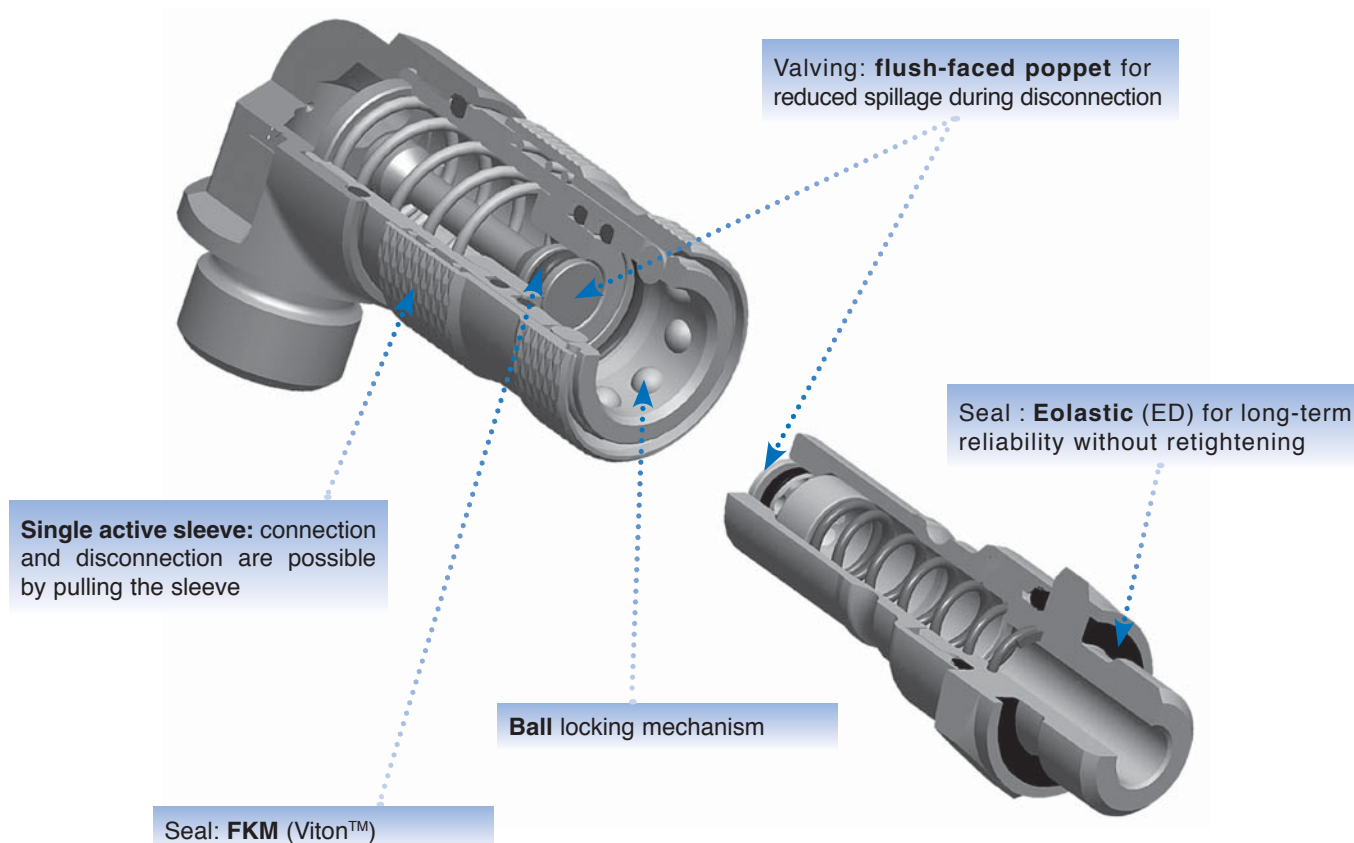
- Minimal fluid loss during disconnection
- Minimal inclusion of air or dust during connection
- Maximal flow
- Compact design

Applications

- Thermoplastic injection moulding: for cooling of machinery or temperatures control lines
- Can be used with cold and hot water as well as with heat transfer oils



Technical features

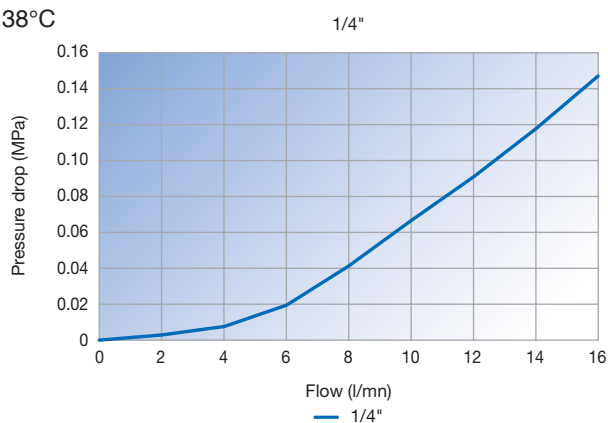


Technical performance data

Body size inch	Temperature range	Max operating pressure MPa	Min burst pressure MPa
1/4"	-20°C +200°C	6.0	20.0

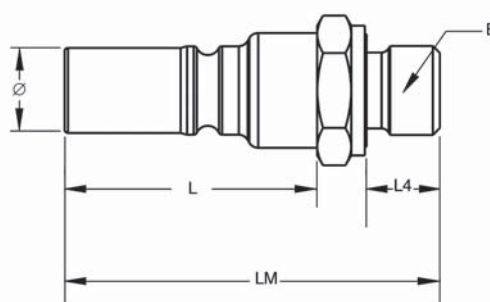
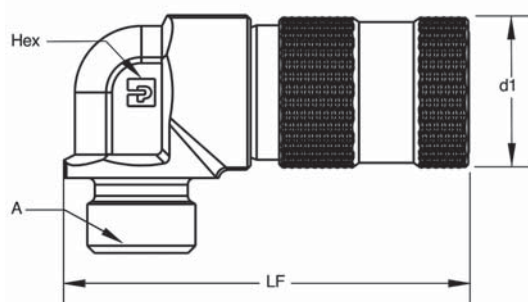
Pressure drop

Test with oil viscosity 43 cSt at 38°C



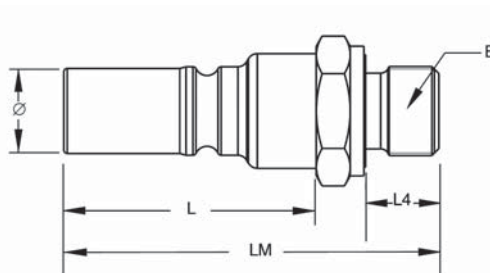
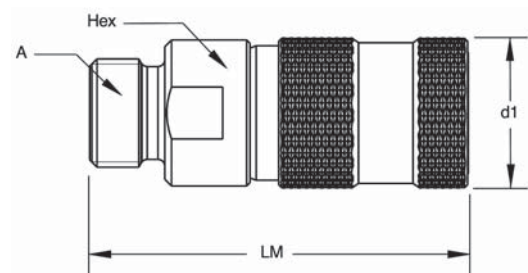
Dimensions and part numbers

Elbowed female version - 24° Cone - DIN 2353



Body size inch	Thread A metric	d1 mm	Hex1 mm	LF mm	L mm	Thread B BSPP	L4 mm	LM mm	LT connected mm	Ø mm	Part number female body	Weight gr./piece	Part number male tip	Weight gr./piece
1/4	M16x1.5	22.0	17.0	59.2	37.0	1/4	11.0	55.0	89.0	12.5	NSI-251-C16MCL	108	NSI-252-4MBE	48

Straight female version - 24° Cone - DIN 2353



Body size inch	Thread A metric	d1 mm	Hex mm	LF mm	L mm	Thread B BSPP	L4 mm	LM mm	LT connected mm	Ø mm	Part number female body	Weight gr./piece	Part number male tip	Weight gr./piece
1/4	M16x1.5	22.0	20.0	55.5	37.0	1/4	11.0	55.0	85.5	12.5	NSI-251-16MCL	84	NSI-252-4MBE	48