

CV

Check  
Valves

SH

Shuttle  
Valves

LM

Load/Motor  
Controls

FC

Flow  
Controls

PC

Pressure  
Controls

LE

Logic  
Elements

DC

Directional  
Controls

MV

Manual  
Valves

SV

Solenoid  
Valves

PV

Proportional  
Valves

CE

Coils &  
Electronics

BC

Bodies &  
Cavities

TD

Technical  
Data

## General Description

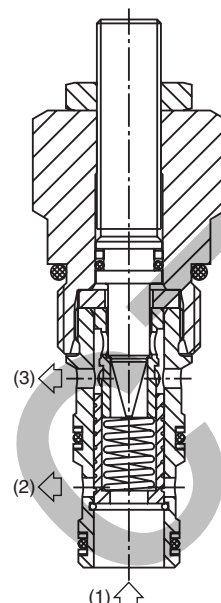
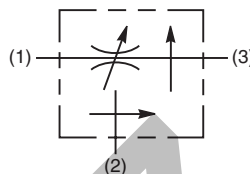
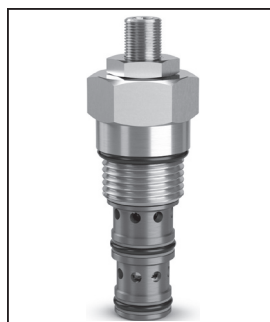
Priority Type, Pressure Compensated Flow Regulator Valve. For additional information see Technical Tips on pages FC1-FC4.

## Features

- High flow capacity
- Good adjustment from 2-45 LPM (0.5-12 GPM)
- Used for systems requiring priority flow such as steering systems
- Hardened working parts for maximum durability
- Reverse flow function 3 to 1
- Adjustable and tamperproof versions available
- All external parts zinc plated

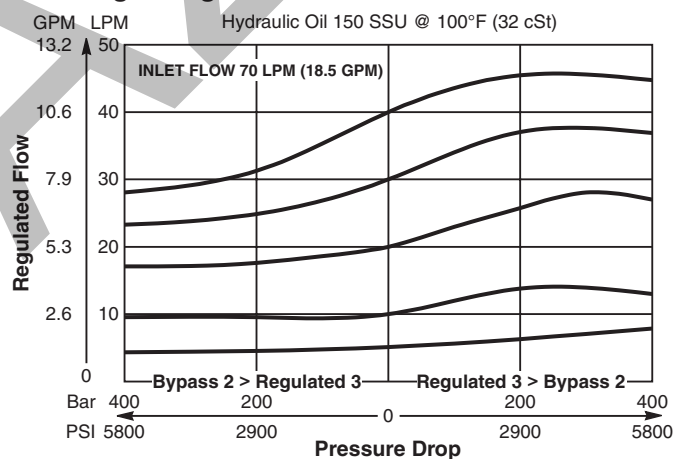
## Specifications

<b>Rated Flow - Inlet</b>	70 LPM (18 GPM)
<b>Maximum Regulated Flow</b>	45 LPM (12 GPM)
<b>Maximum Inlet Pressure</b>	420 Bar (6000 PSI)
<b>Cartridge Material</b>	All parts steel. All operating parts hardened steel.
<b>Operating Temp. Range/Seals</b>	-34°C to +121°C (Nitrile) (-30°F to +250°F) -26°C to +204°C (Fluorocarbon) (-15°F to +400°F)
<b>Fluid Compatibility/Viscosity</b>	Mineral-based or synthetic with lubricating properties at viscosities of 45 to 2000 SSU (6 to 420 cSt)
<b>Filtration</b>	ISO-4406 18/16/13, SAE Class 4
<b>Approx. Weight</b>	.18 kg (.40 lbs.)
<b>Cavity</b>	C10-3 (See BC Section for more details)
<b>Form Tool</b>	Rougher NFT10-3R Finisher NFT10-3F

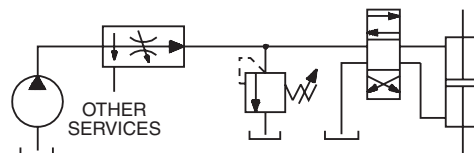


## Performance Curves (Through cartridge only)

### Flow Regulating Performance

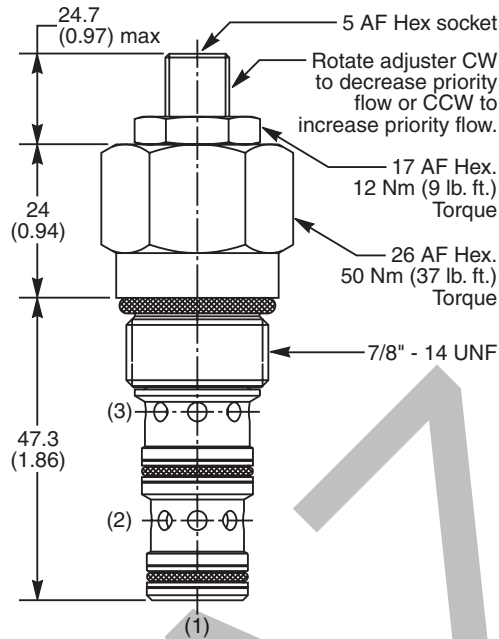


## Application



Priority flow on steering circuit

**Dimensions**    Millimeters (Inches)



**Ordering Information**

J04D3

Pressure Compensated Priority Flow Control Valve

Adjustment Style

Optional Flow Setting

Seals

Body Material

Port Size

Code	Adjustment Style
Z	Screw Adjust (Std.)
W	Knob Adjust (ASV014975)
T	Tamper Resistant Cap (TC1130)

Code	Seals / Kit. No.
N	Nitrile, Buna-N (Std.) / (SK30505N-1)
V	Fluorocarbon / (SK30505V-1)

Code	Body Material
Omit	Steel
A	Aluminum

Code	Port Size	Body Part No.
Omit	Cartridge Only	
6T	SAE-6	(B10-3-*6T)
8T	SAE-8	(B10-3-*8T)

\* Add "A" for aluminum, omit for steel.

Code	Optional Flow Setting
Omit	Omit for no setting*
	Specify setting if required (LPM)

\* Appropriate mid-range setting for Standard = 20 LPM

- CV
- Check Valves
- SH
- Shuttle Valves
- LM
- Load/Motor Controls
- FC
- Flow Controls
- PC
- Pressure Controls
- LE
- Logic Elements
- DC
- Directional Controls
- MV
- Manual Valves
- SV
- Solenoid Valves
- PV
- Proportional Valves
- CE
- Coils & Electronics
- BC
- Bodies & Cavities
- TD
- Technical Data