

CV

Check  
Valves

SH

Shuttle  
ValvesLM  
Load/Motor  
Controls

FC

Flow  
Controls

PC

Pressure  
Controls

LE

Logic  
ElementsDC  
Directional  
Controls

MV

Manual  
Valves

SV

Solenoid  
ValvesPV  
Proportional  
ValvesCE  
Coils &  
ElectronicsBC  
Bodies &  
Cavities

TD

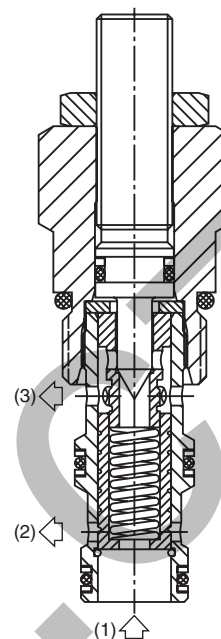
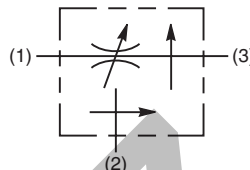
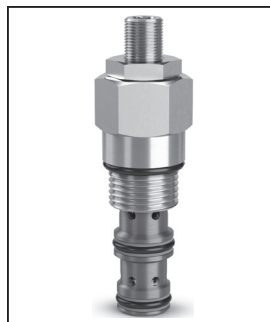
Technical  
Data

## General Description

Needle Type, Pressure Compensated Flow Regulator Valve. For additional information see Technical Tips on pages FC1-FC4.

## Features

- Good adjustment from 1-15 LPM (0.3-4 GPM)
- Used for systems requiring priority flow such as steering systems
- Hardened working parts for maximum durability
- Reverse flow function 3 to 1
- Adjustable and tamperproof versions available
- All external parts zinc plated

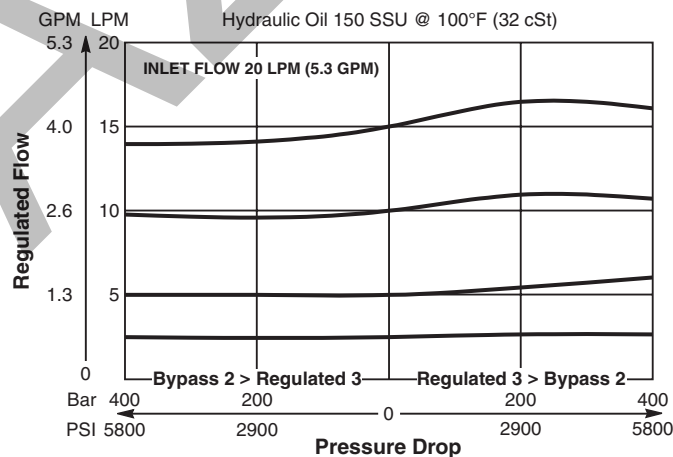


## Specifications

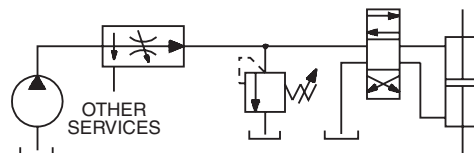
|                                      |  |
|--------------------------------------|--|
| <b>Rated Flow</b>                    | 15 LPM (4 GPM)   |
| <b>Maximum Inlet Pressure</b>        | 420 Bar (6000 PSI)   |
| <b>Cartridge Material</b>            | All parts steel. All operating parts hardened steel.   |
| <b>Operating Temp. Range/Seals</b>   | -34°C to +121°C (Nitrile)<br>(-30°F to +250°F)<br>-26°C to +204°C (Fluorocarbon)<br>(-15°F to +400°F)  |
| <b>Fluid Compatibility/Viscosity</b> | Mineral-based or synthetic with lubricating properties at viscosities of 45 to 2000 SSU (6 to 420 cSt) |
| <b>Filtration</b>                    | ISO-4406 18/16/13, SAE Class 4   |
| <b>Approx. Weight</b>                | .08 kg (.18 lbs.)  |
| <b>Cavity</b>                        | C08-3<br>(See BC Section for more details)   |
| <b>Form Tool</b>                     | Rougher    NFT08-3R<br>Finisher    NFT08-3F  |

## Performance Curves (Through cartridge only)

### Flow Regulating Performance

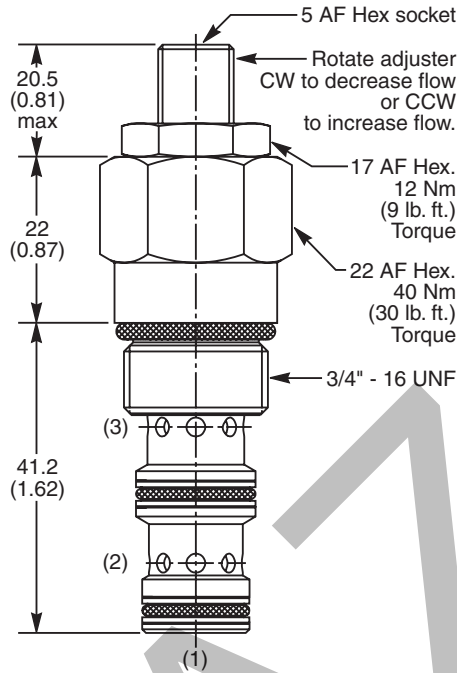


## Application



Priority flow on steering circuit

Dimensions    Millimeters (Inches)



Ordering Information

|   |                          |                             |                          |                          |                          |
|---|--------------------------|-----------------------------|--------------------------|--------------------------|--------------------------|
| <b>J02D3</b>  | <input type="checkbox"/> | <input type="checkbox"/>    | <input type="checkbox"/> | <input type="checkbox"/> | <input type="checkbox"/> |
| Pressure<br>Compensated<br>Priority Flow<br>Control Valve | Adjustment<br>Style      | Optional<br>Flow<br>Setting | Seals                    | Body<br>Material         | Port<br>Size             |

| Code | Adjustment Style              |
|------|-------------------------------|
| Z    | Screw Adjust (Std.)           |
| W    | Knob Adjust                   |
| T    | Tamper Resistant Cap (TC1130) |

| Code | Seals / Kit. No.                      |
|------|---------------------------------------|
| N    | Nitrile, Buna-N (Std.) / (SK30501N-1) |
| V    | Fluorocarbon / (SK30501V-1)           |

| Code | Body Material |
|------|---------------|
| Omit | Steel         |
| A    | Aluminum      |

| Code | Port Size      | Body Part No. |
|------|----------------|---------------|
| Omit | Cartridge Only |               |
| 4T   | SAE-4          | (B08-3-*4T)   |
| 6T   | SAE-6          | (B08-3-*6T)   |

\* Add "A" for aluminum, omit for steel.

| Code | Optional Flow Setting                                     |
|------|---|
| Omit | Omit for no setting*<br>Specify setting if required (LPM) |

\* Appropriate mid-range setting for Standard = 7 LPM

CV

Check  
Valves

SH

Shuttle  
Valves

LM

Load/Motor  
Controls

FC

Flow  
Controls

PC

Pressure  
Controls

LE

Logic  
Elements

DC

Directional  
Controls

MV

Manual  
Valves

SV

Solenoid  
Valves

PV

Proportional  
Valves

CE

Coils &  
Electronics

BC

Bodies &  
Cavities

TD

Technical  
Data