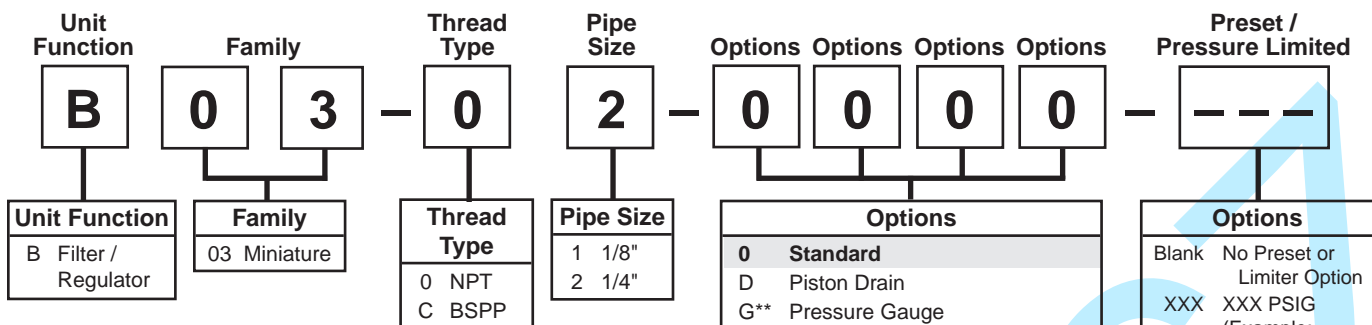


Filter / Regulator Numbering System = "Most Popular"

B

Note: When selecting from the options columns, please enter letters in alphabetical order for positions 6, 7, 8 and 9.
For example: **B 0 3 - 0 1 - D M 0 0**

NOTE: 0000 in position 6, 7, 8 and 9 signifies standard product.
(Poly Bowl, Manual Drain, 2 to 125 PSIG, Relieving)

Spring Type by Preset / Limited Pressure:

For Preset / Limited Pressure 10 to 25 use 30 PSI Spring
For Preset / Limited Pressure 26 to 50 use 60 PSI Spring
For Preset / Limited Pressure 51 to 90 use 125 PSI Spring

Options	
0	Standard
D	Piston Drain
G**	Pressure Gauge
J*†	Preset, Adjustable
K*†	Preset, Non-Adj. / Epoxy
L	1 to 60 PSI, Relieving
M*	Metal Bowl
N	2 to 125 PSI, Non-Relieving
P	1 to 30 PSI, Relieving
Q	1 to 15 PSI, Relieving
R*†	Pressure Limiter
S	1 to 60 PSI, Non-Relieving
T	1 to 30 PSI, Non-Relieving
U	1 to 15 PSI, Non-Relieving

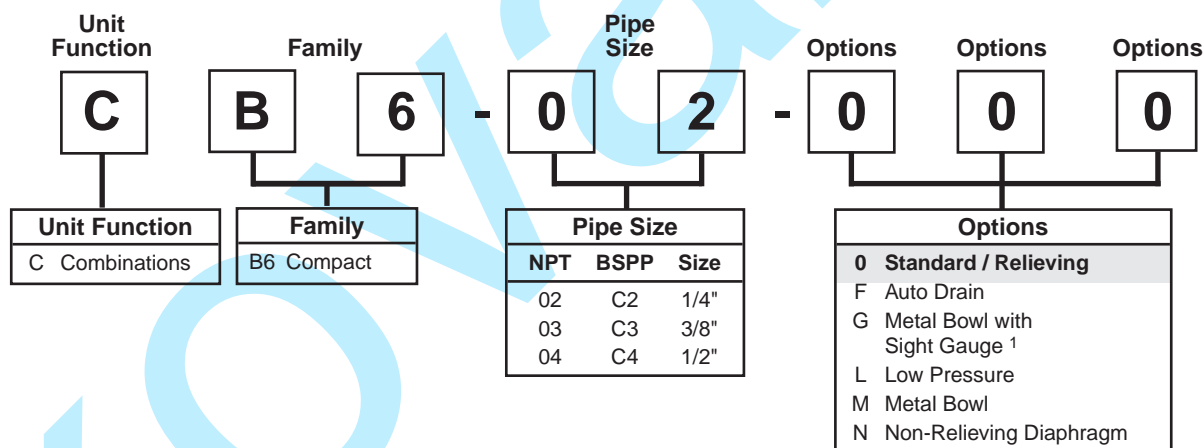
* Inlet pressure is 100 PSIG.

For other pressures, consult factory.

** Not available with BSPP thread type.

† Must specify preset or limited pressure.

Note: Pressure Range
10 to 90 PSIG in 5 PSIG
Increments



¹ For miniature family units, G option is a pressure gauge. For compact, G option is a metal bowl with sight gauge.

"F" Series Filters, Type "A" 5 micron elements: All Wilkerson Type "A" 5 micron elements meet or exceed ISO Class 3 for maximum particle size and concentration of solid contaminants.

NOTE: All classes above refer to International Standards Organization (ISO) standard 8573-1, pertaining to maximum particle size and concentration of solid contaminants, and maximum oil content.

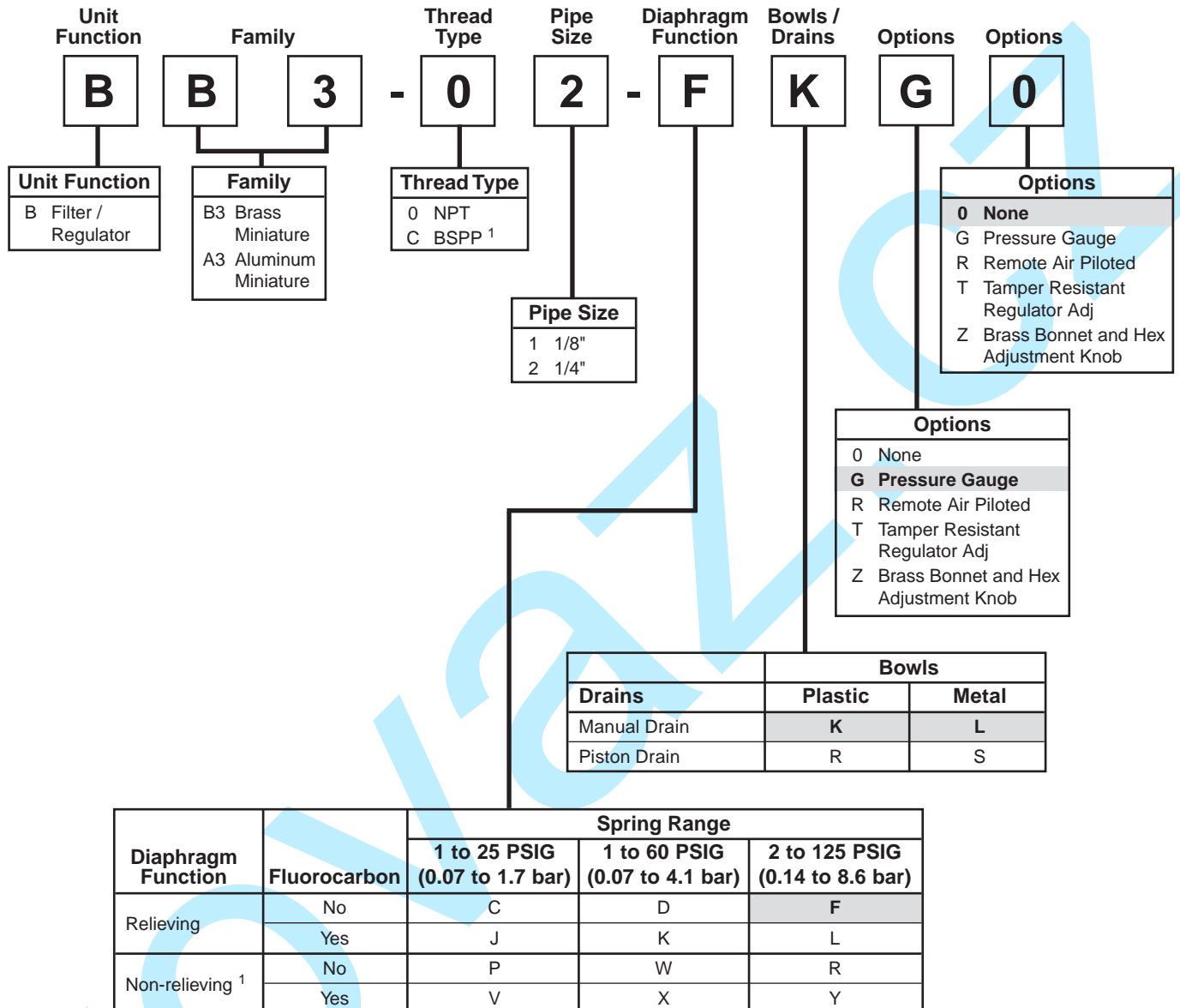
Note: When selecting from the options columns, please enter letters in alphabetical order for positions 6, 7, and 8.
For example:

CB6-02-0 0 0

Note: 000 in positions 6, 7 and 8 signifies standard product.

BB3 / BA3 Series Filter / Regulator Numbering System

 = "Most Popular"



NOTE: Standard pressure adjustment is plastic "snap lock" knob and plastic bonnet with plastic panel mount nut.

¹ ISO, R228 (G Series)

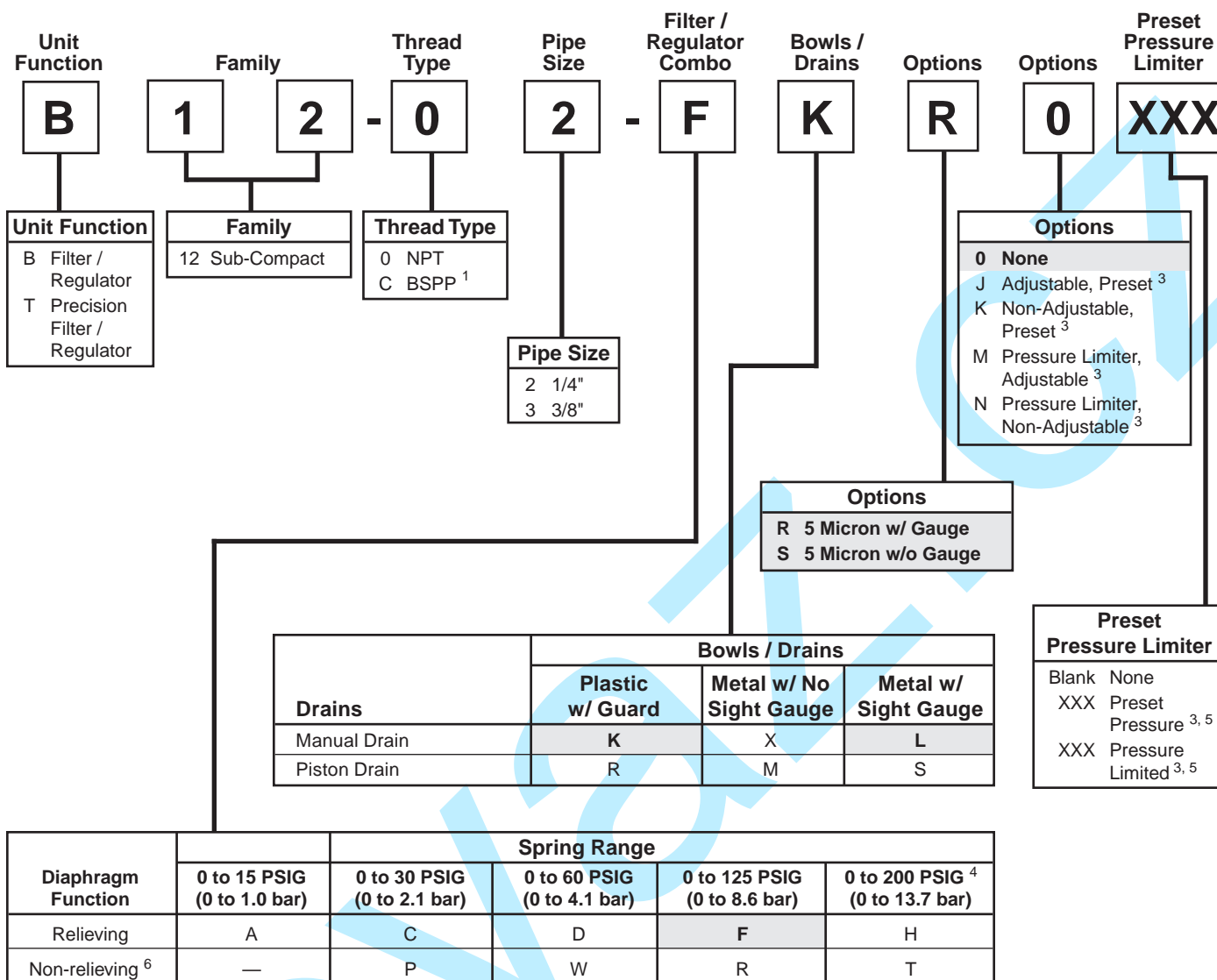
Type "A" 5 micron elements: All Wilkerson Type "A" 5 micron elements **meet or exceed** ISO Class 3 for maximum particle size and concentration of solid contaminants.

Note: When selecting from the options columns, please enter letters in alphabetical order for positions 8 and 9.
For example:

BB3-02-F K G T

NOTE: All classes above refer to International Standards Organization (ISO) standard 8573-1, pertaining to maximum particle size and concentration of solid contaminants, and maximum oil content.

Filter / Regulator Numbering System = "Most Popular"



¹ ISO, R228 (G Series).

³ Inlet pressure is 100 PSIG. For other pressures, contact factory.

⁴ 0 to 200 PSI (0 to 13.8 bar) pressure range available only on units with metal bowl.

⁵ Available Preset / Pressure Limited Range, 10 to 90 PSIG in 5 PSIG increments.

For higher pressures, contact factory. (Example 065 = 65 PSIG).

Spring Type by Preset / Limited Pressure:

For Preset / Limited Pressure 10 to 25 use 30 PSI Spring

For Preset / Limited Pressure 26 to 50 use 60 PSI Spring

For Preset / Limited Pressure 51 to 120 use 125 PSI Spring

For Preset / Limited Pressure 121 to 190 use 200 PSI Spring

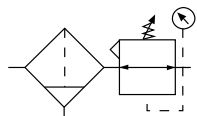
⁶ Not available on T12.

Type "A" 5 micron elements: All Wilkerson Type "A" 5 micron elements **meet or exceed** ISO Class 3 for maximum particle size and concentration of solid contaminants.

NOTE: All classes above refer to International Standards Organization (ISO) standard 8573-1, pertaining to maximum particle size and concentration of solid contaminants, and maximum oil content.

Filter / Regulator

B03

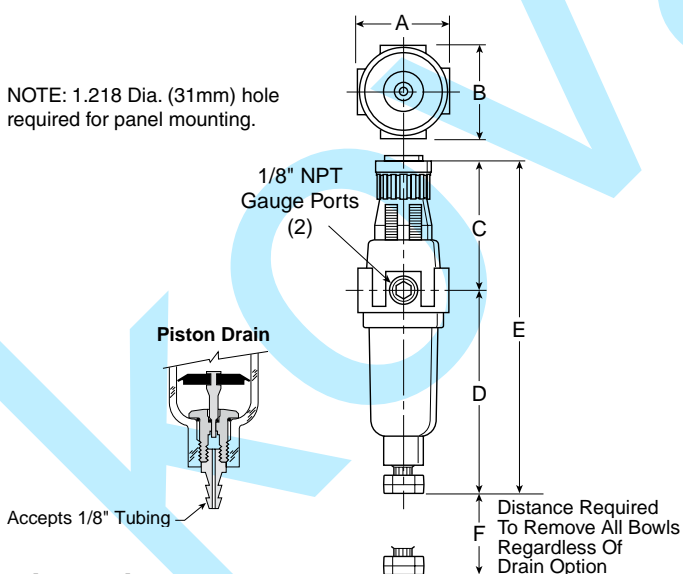


B03-02-0000

Features

- Excellent Water Removal Efficiency
- Unbalanced Poppet Standard
- Solid Control Piston for Extended Life
- Space Saving Package offers both Filter and Regulator features in One Integral Unit
- Non-rising Adjustment Knob
- Two Full Flow 1/8" Gauge Ports

NOTE: 1.218 Dia. (31mm) hole required for panel mounting.



Dimensions

Model	Inches (mm)	A	B	C	D	D†	E	E†	F
Standard Unit B03-XX-XXXX		1.62 (41)	1.58 (40)	2.42 (61)	3.79 (96)	3.64 (92)	6.21 (158)	6.06 (154)	1.60 (41)

† With Piston Drain

Specifications

Flow Capacity*	1/8	16 SCFM (7.5 dm ³ /s)
	1/4	18 SCFM (8.5 dm ³ /s)
Gauge Ports (2)	1/8 Inch	
Port Threads	1/8, 1/4 Inch	
Pressure & Temperature Ratings –		
Plastic Bowl	0 to 150 PSIG (0 to 10.3 bar) 32°F to 125°F (0°C to 52°C)	
Metal Bowl	0 to 250 PSIG (0 to 17.2 bar) 32°F to 175°F (0°C to 80°C)	
Secondary Pressure Ranges –		
Standard Pressure	2 to 125 PSIG (0 to 8.6 bar)	
Medium Pressure	1 to 60 PSIG (0 to 4.1 bar)	
Medium Pressure	1 to 30 PSIG (0 to 2.1 bar)	
Low Pressure	1 to 15 PSIG (0 to 1.0 bar)	
Weight	.4 lb. (.18 kg)	

* Inlet pressure 100 PSIG (6.9 bar). Secondary pressure 90 PSIG (6.2 bar). and 10 PSIG pressure drop.

Materials of Construction

Adjusting Nut	Brass
Adjusting Stem & Spring	Steel
Body	Zinc
Bonnet, Knob, Seat, Piston, Holder & Deflector	Plastic
Bowls – Transparent	Polycarbonate
Metal (Without Sight Gauge)	Zinc
Filter Elements – 5 Micron (Standard)	Plastic
Manual Drain –	
Body & Stem	Plastic
Seals	Nitrile
Piston Drain –	
Piston & Seals	Nitrile
Stem, Seat, Adaptor & Washers	Aluminum
Seals	Nitrile

 = "Most Popular"

Replacement Kits

Filter Element Kit, 5 MicronPS403

Metal Bowl –

Piston DrainPS451B

Manual DrainPS447B

Poly Bowl –

Piston DrainPS408B

Manual DrainPS404

Poppet / Piston Kits –

Unbalanced, Non-RelievingPS428P

Unbalanced, RelievingPS426P

Accessories

Gauges –

30 PSIG (0 to 2.1 bar)K4515N18030

60 PSIG (0 to 4.1 bar)K4515N18060

160 PSIG (0 to 11.0 bar)K4515N18160

Mounting Bracket Kit* (Includes Panel Mount Nut).....PS417B

Panel Mount Nut* –

PlasticP78652

MetalP01531

Springs –

1 to 15 PSIG RangeP01176

1 to 30 PSIG RangeP01175

1 to 60 PSIG RangeP01174

2 to 125 PSIG RangeP01173

*Tighten panel mount nut 2.8 to 3.4 Nm (25 to 30 in-lbs) of torque.



WARNING

Product rupture can cause serious injury.
Do not connect regulator to bottled gas.
Do not exceed maximum primary pressure rating.

CAUTION:

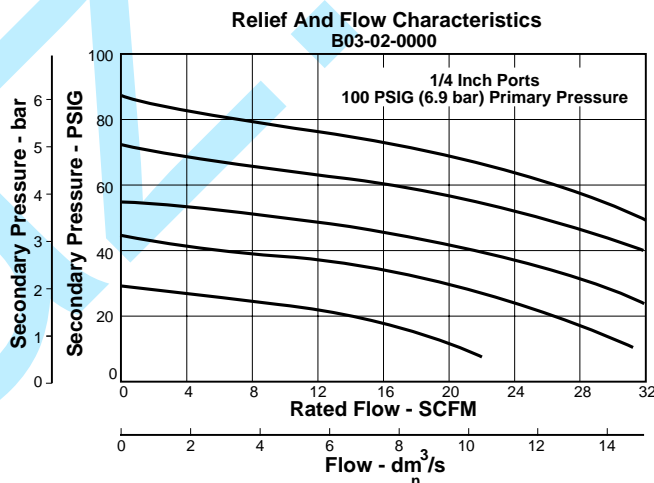
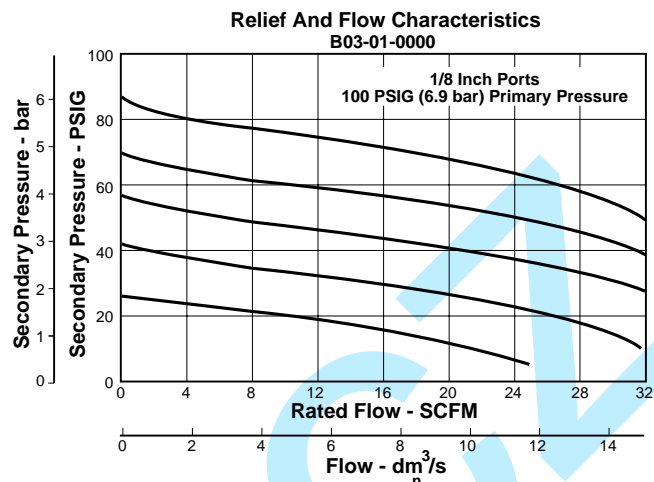
REGULATOR PRESSURE ADJUSTMENT – The working range of knob adjustment is designed to permit outlet pressures within their full range. Pressure adjustment beyond this range is also possible because the knob is not a limiting device. This is a common characteristic of most industrial regulators, and limiting devices may be obtained only by special design.

For best performance, regulated pressure should always be set by increasing the pressure up to the desired setting.

Ordering Information

Model Type	Port Size	Plastic Bowl	Metal Bowl
Manual Drain	1/8	B03-01-0000	B03-01-M000
	1/4	B03-02-0000	B03-02-M000

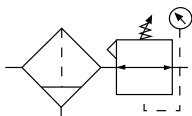
Options - To order an option supplied with the unit model, add the appropriate coded suffix letter in the designated position of the model number.



Miniature
Filter / Regulator
BB3 Brass
BA3 Aluminum

 = "Most Popular"

B



BB3-02-FK00

Features

- Brass Construction Handles Most Corrosive Environments
- Large Diaphragm to Valve Area Ratio for Precise Regulation and High Flow Capacity
- Plastic Bowl or Black Painted Zinc Metal Bowl
- High Flow: 1/4" -16 SCFM
- Fluorocarbon Seals Optional

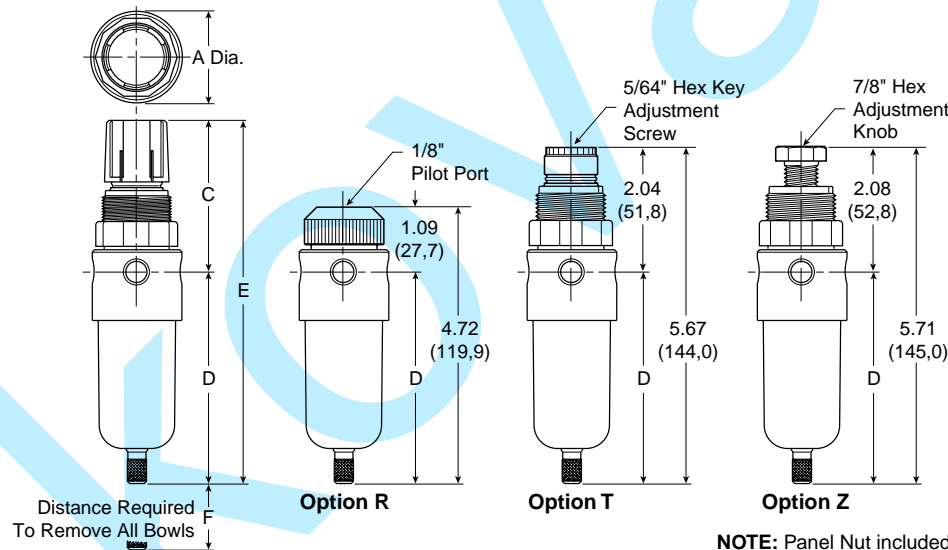
Specifications

Flow Capacity*	1/4	16 SCFM (7.6 dm ³ /s)
Maximum Supply Pressure	300 PSIG (20.7 bar)	
Operating Temperature	40°F to 125°F (4.4°C to 52°C)	
Port Size	NPT / BSPP-G	1/8, 1/4
Standard Filtration	5 Micron	
Weight	0.8 lb. (0.36 kg)	

* Inlet pressure 100 PSIG (6.9 bar). Secondary pressure 75 PSIG (5.2 bar).

Materials of Construction

Body	Brass	
Bowls	Polycarbonate or Zinc - Painted Black	
Manual Drain	Brass	
Diaphragm and Seals	Nitrile	
Element Holder / Deflector / Bonnet	Acetal	
Filter Elements	Type A	Polyethylene
Knob	Acetal	
Springs	Plated Steel	
Valve Assembly and Bottom Plug	Brass	



NOTE: Panel Nut included, but not shown on dimensional drawing.
NOTE: 1.19" dia. (30,2) mm hole required for panel mounting.

Dimensions

Model	Inches (mm)	A	C	D	E	F
Standard Unit - Brass Body BB3-02-XXXX		1.56 (40)	2.63 (67)	3.63 (92)	6.25 (159)	1.58 (40)
Standard Unit - Aluminum Body BA3-02-XXXX		1.56 (40)	2.63 (67)	3.63 (92)	6.25 (159)	1.58 (40)

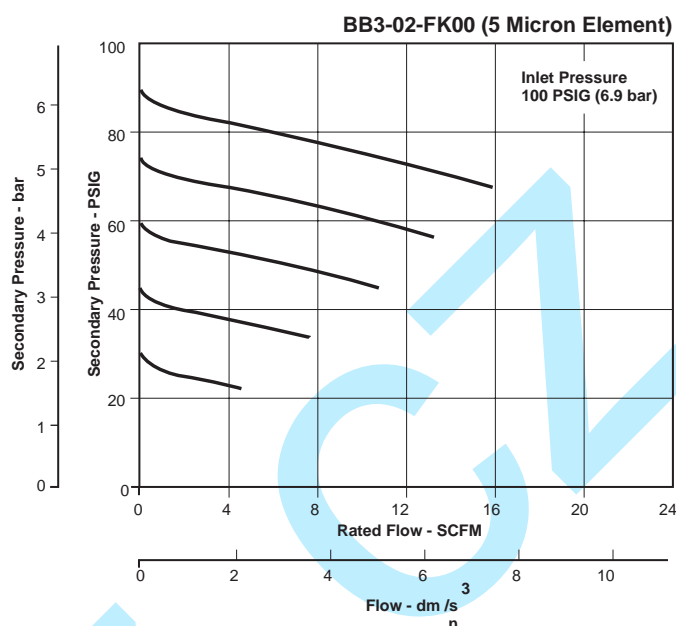
 = "Most Popular"

Replacement Element and Repair Kits

5 Micron Element	FRP-96-806
Bonnet, Knob, Adjusting Screw Kit	RRP-96-821
Bonnet, Tamper Resistant Adjustment Kit	RRP-96-822
Diaphragm and Valve Repair Kit –	
Relieving	RRP-96-819
Non-Relieving	RRP-96-820
Plastic Bowl –	
No Guard, Manual Twist Drain	GRP-96-808
No Guard, Piston Drain	GRP-96-809
Metal Bowl –	
Manual Twist Drain	GRP-96-810
Piston Drain	GRP-96-811

Accessories

Gauge, Pressure –	
0 to 60 PSI (0 to 4.1 bar), 1-1/2" Dial Face, 1/8" NPT	K4515N18060
0 to 160 PSI (0 to 11.0 bar), 1-1/2" Dial Face, 1/8" NPT, CBM	K4515N18160
Manual Drain	GRP-96-812
Piston Type Drain	GRP-96-813
Panel Mount Nut –	
Aluminum	RPA-96-733
Plastic	RPA-96-734
Wall Mounting Bracket –	
L-Type	GRP-95-147
L-Type with Plastic Panel Mount Nut	GRP-95-747



WARNING

**Product rupture can cause serious injury.
Do not connect regulator to bottled gas.
Do not exceed maximum primary pressure rating.**

CAUTION:

REGULATOR PRESSURE ADJUSTMENT – The working range of knob adjustment is designed to permit outlet pressures within their full range. Pressure adjustment beyond this range is also possible because the knob is not a limiting device. This is a common characteristic of most industrial regulators, and limiting devices may be obtained only by special design.

For best performance, regulated pressure should always be set by increasing the pressure up to the desired setting.

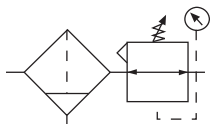
Ordering Information

Model Type	Port Size	Relieving 2 to 125 PSI (0.14 to 8.6 bar) No Bowl Guard	Relieving 1 to 60 PSI (0.07 to 4.1 bar) No Bowl Guard	Relieving 1 to 25 PSI (0.07 to 1.7 bar) No Bowl Guard	Relieving 2 to 125 PSI (0.14 to 8.6 bar) Metal Bowl	Relieving 1 to 60 PSI (0.07 to 4.1 bar) Metal Bowl	Relieving 1 to 25 PSI (0.07 to 1.7 bar) Metal Bowl
Manual Drain	1/8"	BB3-01-FK00	BB3-01-DK00	BB3-01-CK00	BB3-01-FL00	BB3-01-DL00	BB3-01-CL00
	1/4"	BB3-02-FK00	BB3-02-DK00	BB3-02-CK00	BB3-02-FL00	BB3-02-DL00	BB3-02-CL00
Piston Drain	1/8"	BB3-01-FR00	BB3-01-DR00	BB3-01-CR00	BB3-01-FS00	BB3-01-DS00	BB3-01-CS00
	1/4"	BB3-02-FR00	BB3-02-DR00	BB3-02-CR00	BB3-02-FS00	BB3-02-DS00	BB3-02-CS00
Manual Drain	1/8"	BA3-01-FK00	BA3-01-DK00	BA3-01-CK00	BA3-01-FL00	BA3-01-DL00	BA3-01-CL00
	1/4"	BA3-02-FK00	BA3-02-DK00	BA3-02-CK00	BA3-02-FL00	BA3-02-DL00	BA3-02-CL00
Piston Drain	1/8"	BA3-01-FR00	BA3-01-DR00	BA3-01-CR00	BA3-01-FS00	BA3-01-DS00	BA3-01-CS00
	1/4"	BA3-02-FR00	BA3-02-DR00	BA3-02-CR00	BA3-02-FS00	BA3-02-DS00	BA3-02-CS00

Options - To order an option supplied with the unit model, add the appropriate coded suffix letter in the designated position of the model number.

Filter / Regulator

B08



B08-01-FKG0 B08-01-FK00

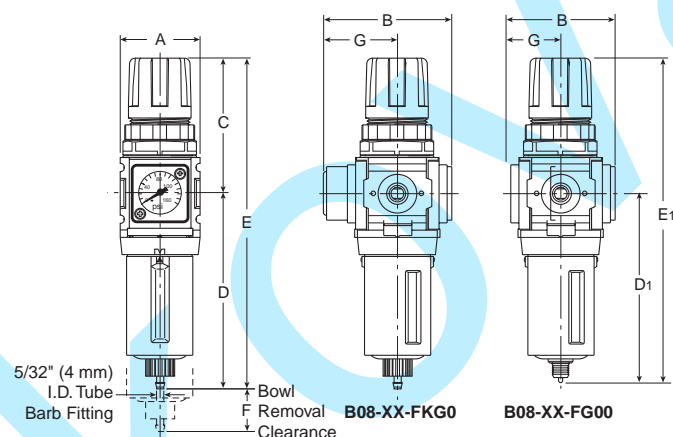
Features

- Space-Saving Integral Filter / Regulator Design
- Unique Flush-mounted Pressure Gauge Available
- Balanced Valve Design
- Modern Design and Appearance
- Light Weight
- High Flow Capacities
- Quick-Disconnect Bowl / Bowl Guard



WARNING

**Product rupture can cause serious injury.
Do not connect regulator to bottled gas.
Do not exceed maximum primary pressure rating.**



NOTES: Flush mounted gauge kits will not fit units originally purchased with threaded gauge ports.
1.25" Dia. (31.7 mm) hole required for panel nut mounting.

Dimensions

Models	Inches (mm)	A	B	C	D	D ₁	E	E ₁	F	G
Standard Unit B08-XX-FK00		1.58 (40)	1.70 (43)	2.60 (66)	3.86 (98)	—	6.46 (164)	—	1.31 (33)	.85 (21.6)
Automatic Piston Drain B08-XX-FRG0		1.58 (40.0)	2.53 (64.3)	2.60 (66.0)	—	3.64 (93)	—	6.24 (159)	1.31 (33)	1.45 (36.8)

Specifications

Flow Capacity*	1/8	28 SCFM (13.2 dm ³ /s)
	1/4	42 SCFM (19.8 dm ³ /s)
Adjusting Range Pressure		0 to 30 PSIG (0 to 2.1 bar)
		0 to 60 PSIG (0 to 4.1 bar)
		0 to 125 PSIG (0 to 8.6 bar)
Gauge Ports** (2 ea.) NPT		1/8
Maximum Supply Pressure	Plastic Bowl	150 PSIG (10.3 bar)
	Metal Bowl	250 PSIG (17.2 bar)
Operating Temperature	Plastic Bowl	32° to 125°F (0° to 52°C)
	Metal Bowl	32° to 150°F (0° to 65.5°C)
Port Size	NPT / BSPP-G	1/8, 1/4
Standard Filtration		5 Micron
Weight		.75 lb. (0.34 kg)

* Inlet pressure 100 PSIG (6.9 bar). Secondary pressure 90 PSIG (6.2 bar).

** Non gauge option only.

"F" Series Filters, Type "A" 5 micron elements: All Wilkerson Type "A" 5 micron elements **meet or exceed ISO Class 3** for maximum particle size and concentration of solid contaminants.

Materials of Construction

Adjustment Knob	Acetal	
Body	Zinc	
Body Cap	ABS	
Bonnet	PBT	
Bowl	Plastic Bowl	Polycarbonate
	Metal Bowl	Zinc
Bowl Guard	Nylon	
Diaphragm Assembly	Brass / Nitrile	
Filter Element	Polyethylene	
Panel Nut	Acetal	
Seals	Plastic Bowl	Nitrile
	Metal Bowl	Nitrile
Springs	Steel	
Valve Assembly	Brass / Nitrile	

CAUTION:

REGULATOR PRESSURE ADJUSTMENT – The working range of knob adjustment is designed to permit outlet pressures within their full range. Pressure adjustment beyond this range is also possible because the knob is not a limiting device. This is a common characteristic of most industrial regulators, and limiting devices may be obtained only by special design.

For best performance, regulated pressure should always be set by increasing the pressure up to the desired setting.

 = "Most Popular"

Replacement Bowl Kits

Metal Bowl, Manual Drain.....GRP-96-714

Plastic Bowl / Bowl Guard, Manual Drain.....GRP-96-712

Replacement Element Kit

Type "A", 5 MicronFRP-96-729

Replacement Kits

Adjusting Knob.....RRP-16-005-000

Diaphragm Assembly –

Non-relieving GRP-96-726

Relieving GRP-96-725

Spring, Regulating–

0 to 30 PSIG (0 to 2.0 bar)..... GRP-95-111

0 to 60 PSIG (0 to 4.1 bar)..... GRP-96-718

0 to 125 PSIG (0 to 8.5 bar)..... GRP-96-717

Valve Assembly.....RRP-96-727

Accessories

Automatic Piston DrainGRP-96-716

Gauge Adapter Block, 1/4" NPT,GPA-97-037
(Replaces Flush Mount Gauge)

Panel Mount Nut –

Aluminum.....RPA-96-733

PlasticRPA-96-734

Pressure Gauge, Flush Mounted –

0 to 60 PSIGK4511SCR060

0 to 150 PSIGK4511SCR150

0 to 11 bar.....K4511SCR11B

Pressure Gauge, 0 to 60 PSIG (0 to 4.1 bar),

1-1/2" Dial Face, 1/8 NPT, CBM.....K4515N18060

Pressure Gauge 0 to 160 PSIG (0 to 11.0 bar),

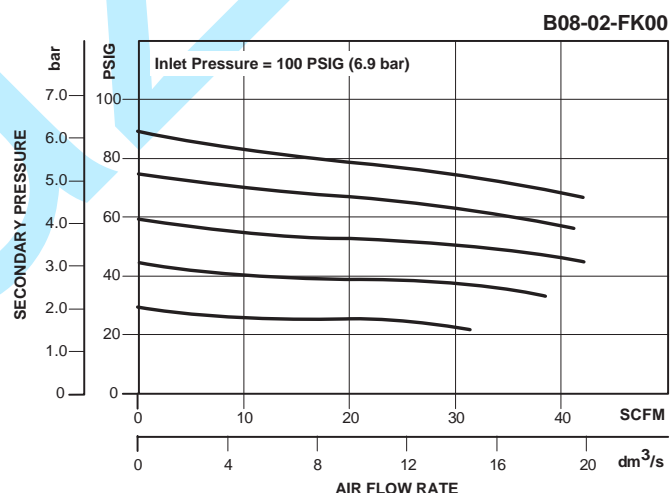
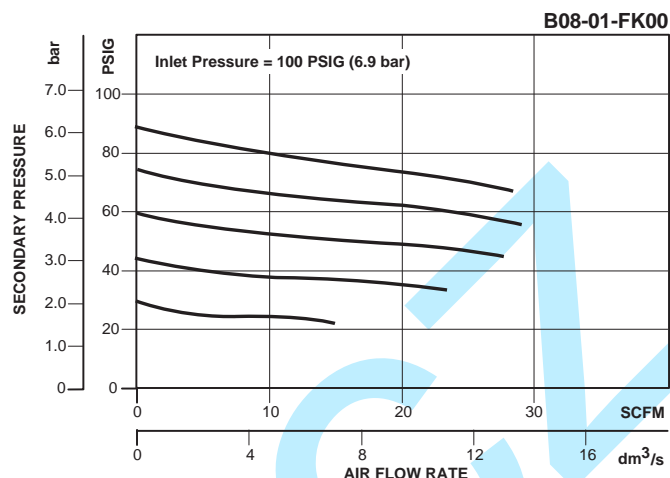
1-1/2" Dial Face, 1/8 NPT, CBM.....K4515N18160

Tamper Resistant Kit.....RPA-96-735

Wall Mounting Bracket -

C-TypeGPA-97-010

L-TypeGRP-96-739

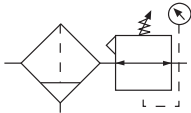


Ordering Information

Model Type	Port Size	Plastic Bowl / Bowl Guard / Manual Drain / Without Gauge 0 to 30 PSIG (0 to 0.2 bar)	Plastic Bowl / Bowl Guard / Manual Drain / Without Gauge 0 to 125 PSIG (0 to 8.6 bar)	Plastic Bowl / Bowl Guard / Manual Drain / With Gauge 0 to 20 PSIG (0 to 2.0 bar)	Plastic Bowl / Bowl Guard / Manual Drain / With Gauge 0 to 125 PSIG (0 to 8.6 bar)	Plastic Bowl / Bowl Guard / Manual Drain / Low Pressure / Without Gauge 0 to 60 PSIG (0 to 4.1 bar)	Plastic Bowl / Bowl Guard / Manual Drain / Automatic Piston / With Gauge 0 to 125 PSIG (0 to 8.6 bar)
Relieving	1/8	B08-01-CK00	B08-01-FK00	B08-01-CKG0	B08-01-FKG0	B08-01-DK00	B08-01-FRG0
	1/4	B08-02-CK00	B08-02-FK00	B08-02-CKG0	B08-02-FKG0	B08-02-DK00	B08-02-FRG0
Non-relieving	1/8	B08-01-PK00	B08-01-RK00	B08-01-PKG0	B08-01-RKG0	B08-01-WK00	B08-01-RRG0
	1/4	B08-02-PK00	B08-02-RK00	B08-02-PKG0	B08-02-RKG0	B08-02-WK00	B08-02-RRG0

Options - To order an option supplied with the unit model, add the appropriate coded suffix letter in the designated position of the model number.

Filter / Regulator B12

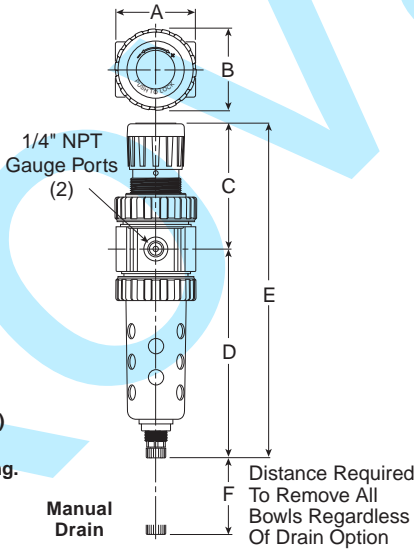
 = “Most Popular”

B12-02-FKS0

Features

- Space Saving Package Offers Both Filter and Regulator Features for Optimal Performance
- Excellent Water Removal Efficiency
- Rolling Diaphragm for Extended Life
- Removable Non-rising Knob for Tamper Resistance
- Quick Response, and Accurate Pressure Regulation Regardless of Changing Flow or Inlet Pressure
- 5 Micron Standard

NOTE: Panel Mount Nut sold separately.



NOTE: Barb (Piston Drain) accepts 3/16" ID tubing.

Dimensions

Model	Inches (mm)	A	B	C	D†	E†	F
Standard Unit B12-XX-FKS0		2.00 (51)	2.06 (52)	3.16 (80)	5.35 (136)	8.51 (216)	1.77 (45)

† With Manual or Piston Drain

Specifications

High Flow Capacity*	1/4	25 SCFM (11.8 dm³/s)
	3/8	30 SCFM (14.2 dm³/s)
Gauge Ports (2x)	NPT / BSPP-G 1/4	
Maximum Supply Pressure	Plastic Bowl	150 PSIG (10.3 bar)
	Metal Bowl	250 PSIG (17.2 bar)
Operating Temperature	Plastic Bowl	32° to 125°F (0° to 52°C)
	Metal Bowl	32° to 175°F (0° to 80°C)
Port Size	NPT / BSPP-G 1/4, 3/8	
Standard Filtration	5 Micron	
Weight	1.35 lb. (0.6 kg)	

* Inlet pressure 100 PSIG (6.9 bar) , Secondary pressure 90 PSIG (6.2 bar).

Materials of Construction

Adjustment Knob	Plastic	
Body	Zinc	
Bonnet, Internal Parts	Plastic	
Bowls	Plastic Bowl	Polycarbonate
	Metal Bowl	Zinc
Bowl Guard	Steel	
Diaphragm	Nitrile	
Drain	Plastic	
Filter Element	Sintered Plastic	
Seals	Nitrile	
Springs	Steel	
Valve Assembly	Plastic	

⚠ WARNING

Product rupture can cause serious injury.
Do not connect regulator to bottled gas.
Do not exceed maximum primary pressure rating.

CAUTION:

REGULATOR PRESSURE ADJUSTMENT – The working range of knob adjustment is designed to permit outlet pressures within their full range. Pressure adjustment beyond this range is also possible because the knob is not a limiting device. This is a common characteristic of most industrial regulators, and limiting devices may be obtained only by special design.

For best performance, regulated pressure should always be set by increasing the pressure up to the desired setting.

 = "Most Popular"

Replacement Bowl Kits

Metal Bowl Guard GRP-96-345

Metal Bowl–

Manual Drain GRP-96-348

Piston Drain GRP-96-353

Sight Gauge / Manual Drain GRP-96-349

Sight Gauge / Piston Drain GRP-96-352

Plastic Bowl–

Manual Drain GRP-96-347

Piston Drain GRP-96-351

Replacement Element Kits

5 Micron GRP-96-344

40 Micron GRP-96-343

Replacement Kits

Bonnet Assembly Kit RRP-96-308

Control Knob RRP-96-300

Pressure Gauge –

30 PSIG K4515N14030

60 PSIG K4515N14060

160 PSIG K4515N14160

300 PSIG K4515N14300

Service Kit –

Non-relieving RRP-96-307

Relieving RRP-96-306

Springs, Regulating –

1 to 30 PSIG (0.06 to 2.1 bar) RRP-96-303

1 to 60 PSIG (0.06 to 4.1 bar) RRP-96-302

2 to 125 PSIG (0.13 to 8.6 bar) RRP-96-301

2 to 200 PSIG (0.13 to 17.2 bar) RRP-96-304

Accessories

Drain Kit –

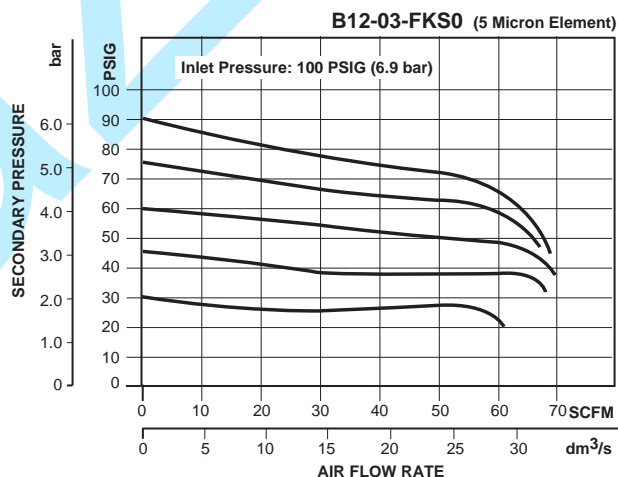
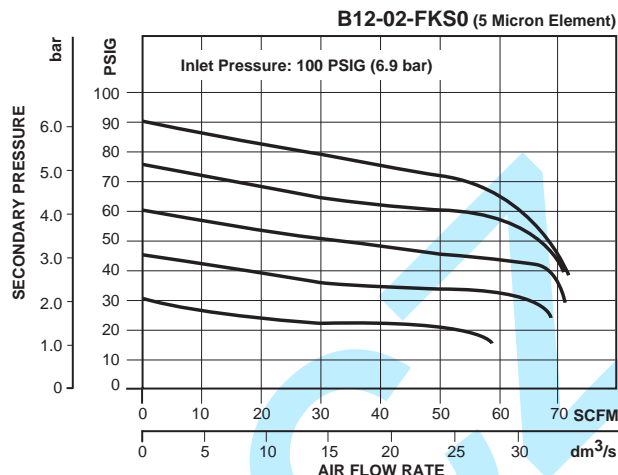
Manual Drain GRP-96-340

Piston Drain GRP-96-354

Mounting Bracket Kit (With Panel Mount Nut) GPA-96-313

Panel Mount Nut, Metal GPA-96-314

Sight Gauge Kit GRP-96-346

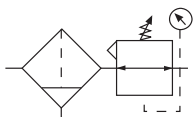


Ordering Information

Model Type	Port Size	Plastic Bowl / Bowl Guard / Without Gauge / Manual Drain	Plastic Bowl / Bowl Guard / Without Gauge / Piston Drain	Metal Bowl / Sight Gauge / With Gauge / Manual Drain	Metal Bowl / Sight Gauge / With Gauge / Piston Drain
Relieving	1/4	B12-02-FKS0	B12-02-FRS0	B12-02-FLG0	B12-02-FSG0
	3/8	B12-03-FKS0	B12-03-FRS0	B12-03-FLG0	B12-03-FSG0
Non-relieving	1/4	B12-02-RKS0	B12-02-RRS0	B12-02-RLG0	B12-02-RSG0
	3/8	B12-03-RKS0	B12-03-RRS0	B12-03-RLG0	B12-03-RSG0

Options - To order an option supplied with the unit model, add the appropriate coded suffix letter in the designated position of the model number.

Precision Filter / Regulator T12

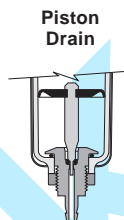


T12-02-FKS0

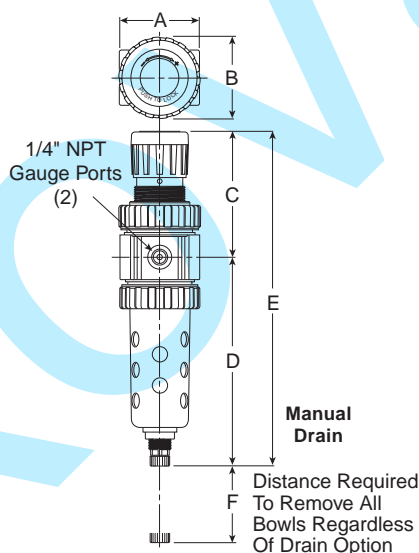
Features

- Space Saving Package Offers Both Filter and Regulator Features for Optimal Performance
- Excellent Water Removal Efficiency
- Rolling Diaphragm for Extended Life
- Removable Non-rising Knob for Tamper Resistance
- Quick Response, and Accurate Pressure Regulation Regardless of Changing Flow or Inlet Pressure
- 5 Micron Standard

NOTE: Panel Mount Nut sold separately.



NOTE: Barb (Piston Drain) accepts 3/16" ID tubing.



Dimensions

Model	Inches (mm)	A	B	C	D†	E†	F
Precision Unit T12-XX-FKS0		2.00 (51)	2.06 (52)	3.16 (80)	5.35 (136)	8.51 (216)	1.77 (45)

† With Manual or Piston Drain

Specifications

High Flow Capacity*

1/4	25 SCFM (11.8 dm ³ /s)
3/8	25 SCFM (11.8 dm ³ /s)

Gauge Ports (2x)	NPT / BSPP-G	1/4
------------------	--------------	-----

Maximum Supply Pressure	Plastic Bowl	150 PSIG (10.3 bar)
	Metal Bowl	250 PSIG (17.2 bar)

Operating Temperature	Plastic Bowl	32° to 125°F (0° to 52°C)
	Metal Bowl	32° to 175°F (0° to 80°C)

Port Size	NPT / BSPP-G	1/4, 3/8
-----------	--------------	----------

Standard Filtration	5 Micron
---------------------	----------

Weight	1.35 lb. (0.6 kg)
--------	-------------------

* Inlet pressure 100 PSIG (7 bar), no flow secondary pressure set 90 PSIG (6.2 bar), 10 PSIG pressure drop at rated flow.

Materials of Construction

Adjustment Knob		Plastic
Body		Zinc
Bonnet, Internal Parts		Plastic
Bowls	Plastic Bowl Metal Bowl	Polycarbonate Zinc
Bowl Guard		Steel
Diaphragm		Nitrile
Drain		Plastic
Filter Element		Sintered Plastic
Seals		Nitrile
Springs		Steel
Valve Assembly		Brass

WARNING

**Product rupture can cause serious injury.
Do not connect regulator to bottled gas.
Do not exceed maximum primary pressure rating.**

CAUTION:

REGULATOR PRESSURE ADJUSTMENT – The working range of knob adjustment is designed to permit outlet pressures within their full range. Pressure adjustment beyond this range is also possible because the knob is not a limiting device. This is a common characteristic of most industrial regulators, and limiting devices may be obtained only by special design.

For best performance, regulated pressure should always be set by increasing the pressure up to the desired setting.

Replacement Bowl Kits

Metal Bowl Guard GRP-96-345

Metal Bowl –

Manual Drain GRP-96-348

Piston Drain GRP-96-353

Sight Gauge / Manual Drain GRP-96-349

Sight Gauge / Piston Drain GRP-96-352

Plastic Bowl –

Manual Drain GRP-96-347

Piston Drain GRP-96-351

Replacement Element Kits

5 Micron GRP-96-344

40 Micron GRP-96-343

Replacement Kits

Bonnet Assembly Kit RRP-96-308

Control Knob RRP-96-312

Service Kit, Relieving RRP-96-305

Springs, Regulating –

1 to 15 PSIG (0.06 to 1.7 bar) RRP-96-311

1 to 30 PSIG (0.06 to 2.1 bar) RRP-96-303

1 to 60 PSIG (0.06 to 4.1 bar) RRP-96-302

2 to 125 PSIG (0.13 to 8.6 bar) RRP-96-301

2 to 200 PSIG (0.13 to 17.2 bar) RRP-96-304

Accessories

Drain Kit –

Manual Drain GRP-96-340

Piston Drain GRP-96-354

Gauges –

30 PSIG (0 to 2.1 bar) K4515N14030

60 PSIG (0 to 4.1 bar) K4515N14060

160 PSIG (0 to 11.0 bar) K4515N14160

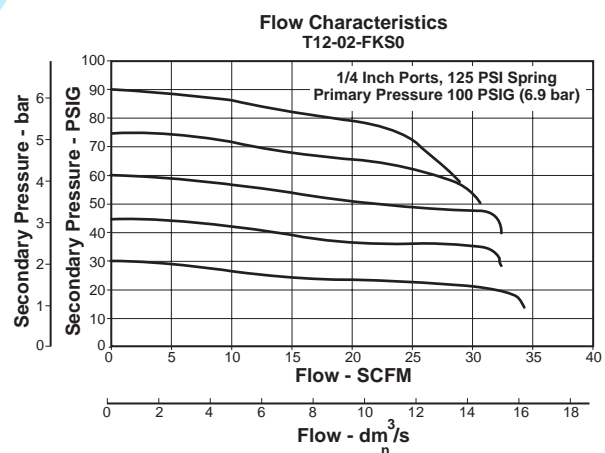
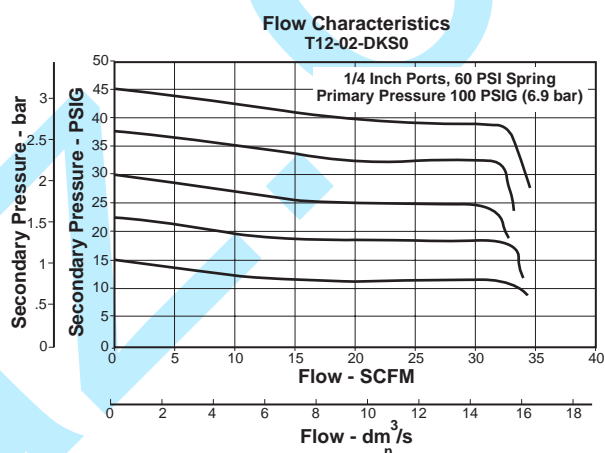
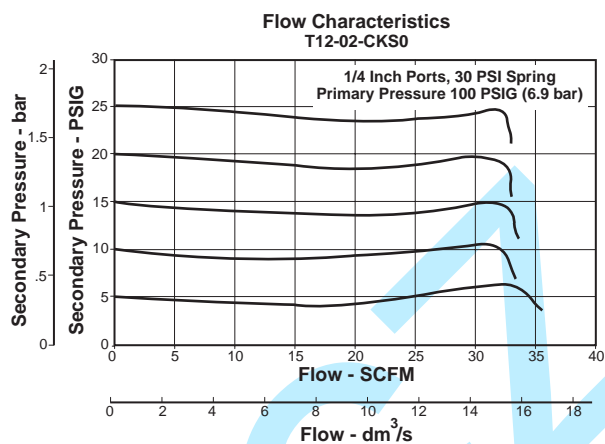
300 PSIG (0 to 20.0 bar) K4515N14300

Mounting Bracket Kit (With Panel Mount Nut) GPA-96-313

Panel Mount Nut, Metal GPA-96-314

Sight Gauge Kit GRP-96-346

 = “Most Popular”

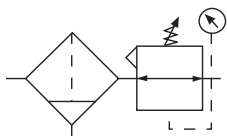


Ordering Information

Model Type	Port Size	Plastic Bowl / Bowl Guard / Manual Drain	Plastic Bowl/ Bowl Guard / Piston Drain	Metal Bowl / Sight Gauge / Manual Drain	Metal Bowl / Sight Gauge / Piston Drain
Relieving	1/4	T12-02-FKS0	T12-02-FRS0	T12-02-FLS0	T12-02-FSS0
	3/8	T12-03-FKS0	T12-03-FRS0	T12-03-FLS0	T12-03-FSS0

Options - To order an option supplied with the unit model, add the appropriate coded suffix letter in the designated position of the model number.

Filter / Regulator B18



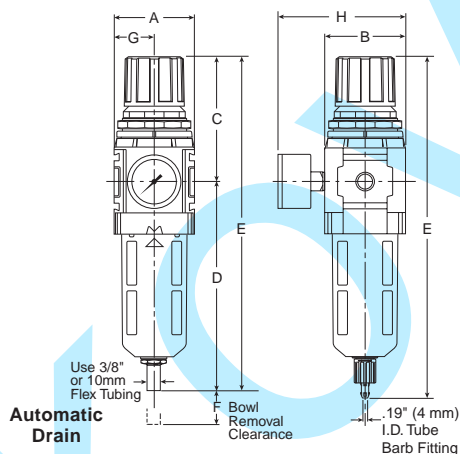
B18-02-FKG0

Features

- 5 Micron Filtration
- Balanced Valve Design
- Spring Loaded Diaphragm
- 1/2" NPT / BSPP-G Over-Ported
- Quick-Disconnect Bowl / Bowl Guard
- Light Weight
- High Flow Capacities

WARNING

**Product rupture can cause serious injury.
Do not connect regulator to bottled gas.
Do not exceed maximum primary pressure rating.**



Dimensions

Models	Inches (mm)	A	B	C	D	E	F	G	H
Standard Unit with Manual Drain B18-XX-FK00		2.36 (60)	2.36 (60)	3.66 (93)	6.34 (161)	10.00 (254)	1.60 (41)	1.20 (30)	3.74 (95)
Automatic Drain B18-XX-FG00		2.36 (60)	2.36 (60)	3.66 (93)	6.11 (155)	9.77 (248)	1.60 (41)	1.20 (30)	3.74 (95)
Metal Bowl with Sight Gauge / Manual Drain		2.36 (60)	2.70 (69)	3.66 (93)	6.34 (161)	10.00 (254)	1.60 (41)	1.20 (30)	3.74 (95)
Metal Bowl with Sight Gauge / Automatic Drain		2.36 (60)	2.70 (69)	3.66 (93)	6.11 (155)	9.77 (248)	1.60 (41)	1.20 (30)	3.74 (95)

 = "Most Popular"

Specifications

Flow Capacity*	1/4	88 SCFM (41.5 dm ³ /s)
	3/8	117 SCFM (55.2 dm ³ /s)
	1/2	121 SCFM (57.1 dm ³ /s)
Adjusting Range Pressure		0 to 30 PSIG (0 to 2.1 bar)
		0 to 60 PSIG (0 to 4.1 bar)
		0 to 125 PSIG (0 to 8.6 bar)
		0 to 250 PSIG (0 to 17.2 bar)
Gauge Port (2 ea.)	NPT / BSPP-G	1/4
Maximum Supply Pressure	Plastic Bowl	150 PSIG (10.3 bar)
	Metal Bowl	250 PSIG (17.2 bar)
Operating Temperature	Plastic Bowl	32° to 125°F (0° to 52°C)
	Metal Bowl	32° to 150°F (0° to 65.5°C)
Port Size	NPT / BSPP-G	1/4, 3/8, 1/2
Standard Filtration		5 Micron
Weight		1.48 lb. (0.67 kg)

* Inlet pressure 100 PSIG (6.9 bar). Secondary pressure 90 PSIG (6.2 bar).

"F" Series Filters, Type "A" 5 micron elements: All Wilkerson Type "A" 5 micron elements **meet or exceed ISO Class 3** for maximum particle size and concentration of solid contaminants.

Materials of Construction

Adjustment Knob	Acetal	
Body	Zinc	
Body Cap	ABS	
Bowl	Plastic Bowl	Polycarbonate
	Metal Bowl	Aluminum
Bowl Guard	Nylon	
Diaphragm Assembly	Nitrile / Zinc	
Element Retainer / Baffle	Acetal	
Filter Element	Sintered Polyethylene	
Panel Nut	Acetal	
Seals	Plastic Bowl	Nitrile
	Metal Bowl	Nitrile
Sight Gauge	Metal Bowl	Polyamide (Nylon)
Springs	Main Regulating / Valve	Steel / S.S.
Valve Assembly	Brass / Nitrile	

CAUTION:

REGULATOR PRESSURE ADJUSTMENT – The working range of knob adjustment is designed to permit outlet pressures within their full range. Pressure adjustment beyond this range is also possible because the knob is not a limiting device. This is a common characteristic of most industrial regulators, and limiting devices may be obtained only by special design.

For best performance, regulated pressure should always be set by increasing the pressure up to the desired setting.

 = "Most Popular"

Replacement Bowl Kits

Metal Bowl –

- Sight Gauge, Automatic Drain..... GRP-96-637
Sight Gauge, Manual Drain..... GRP-96-636

Plastic Bowl –

- Bowl Guard, Automatic Drain..... GRP-96-635
Bowl Guard, Manual Drain..... GRP-96-634
Bowl Guard, No Drain GRP-96-638

Replacement Element Kits

- Type "A", 5 Micron..... FRP-96-639
Retainer, Deflector, and Element Kit FRP-96-641

Replacement Kits

- Adjusting Knob..... RRP-16-340-000
Diaphragm Assembly –
Non-relieving RRP-96-657
Relieving RRP-96-656
Spring, Regulating –
0 to 30 PSIG (0 to 2.1 bar)..... RRP-96-659
0 to 60 PSIG (0 to 4.1 bar)..... RRP-96-660
0 to 125 PSIG (0 to 8.6 bar)..... RRP-96-661
0 to 250 PSIG (0 to 17.2 bar)..... RRP-96-662
Valve Assembly..... RRP-96-658

Accessories

Automatic Drain –

- Fluorocarbon GRP-95-981
Nitrile..... GRP-95-973

Drain, Manual Override..... GRP-96-000

Manual Drain..... GRP-96-685

Panel Mount Nut –

- Aluminum..... RRP-96-673
Plastic RRP-96-675

Pressure Gauge –

- 0 to 30 PSIG, 1-1/2" Dial Face, 1/4 NPT CBM .. K4515N14030
0 to 60 PSIG, 1-1/2" Dial Face, 1/4 NPT CBM .. K4515N14060
0 to 160 PSIG, 1-1/2" Dial Face, 1/4 NPT CBM .. K4515N14160
0 to 300 PSIG, 1-1/2" Dial Face, 1/4 NPT CBM .. K4515N14300
0 to 2.0 bar, 1-1/2" Dial Face, G 1/4 CBM K4515G14030
0 to 4.1 bar, 1-1/2" Dial Face, G 1/4 CBM..... K4515G14060
0 to 11 bar, 1-1/2" Dial Face, G 1/4 CBM..... K4515G14160
0 to 21 bar, 1-1/2" Dial Face, G 1/4 CBM K4515G14290

Tamper Resistant Kit..... RRP-96-671

Sight Gauge Kit..... GRP-96-825

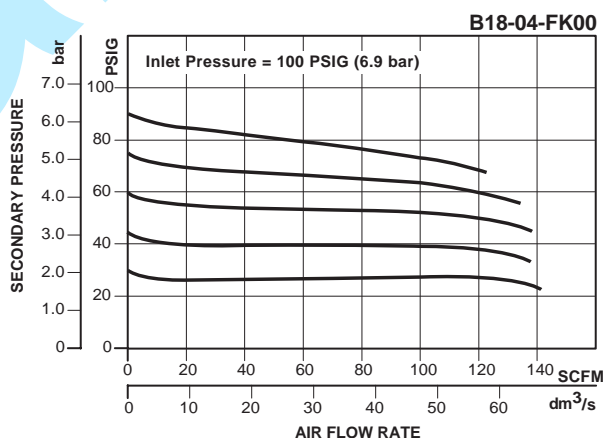
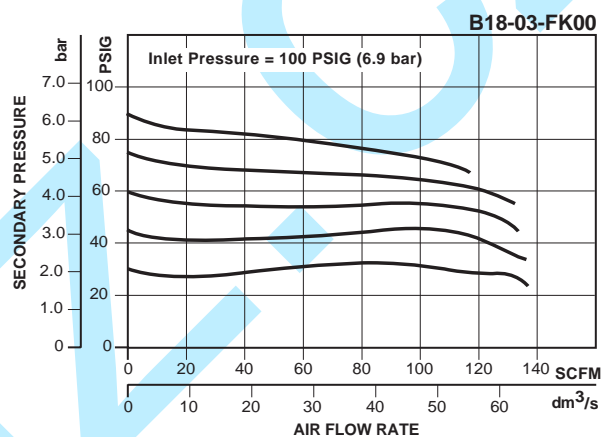
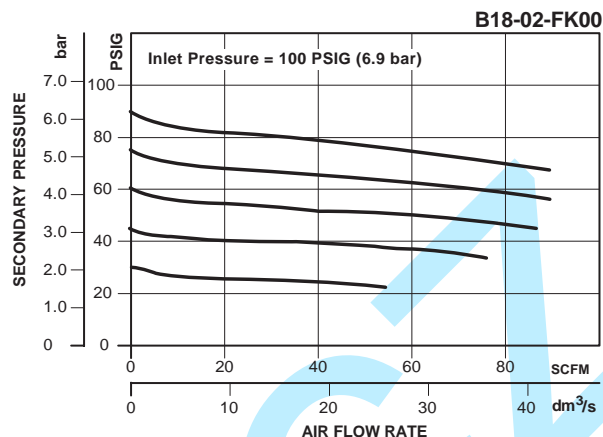
Wall Mounting Bracket

- L-Type (Body)..... GPA-96-604
L-Type (Bonnet)..... GPA-96-606
T-Type GPA-96-602

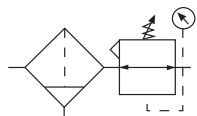
Ordering Information

Model Type	Port Size	Plastic Bowl / Bowl Guard With Gauge 5 to 125 PSIG (0.4 to 8.6 bar)	Plastic Bowl / Bowl Guard With Gauge 3 to 60 PSIG (0.2 to 4.1 bar)	Metal Bowl / Sight Gauge With Gauge 10 to 250 PSIG (0.7 to 17.2 bar)	Plastic Bowl / Bowl Guard Without Gauge 5 to 125 PSIG (0.4 to 8.6 bar)	Plastic Bowl / Bowl Guard Without Gauge 3 to 60 PSIG (0.2 to 4.1 bar)	Metal Bowl / Sight Gauge Without Gauge 10 to 250 PSIG (0.7 to 17.2 bar)
Manual Drain	1/4	B18-02-FKG0	B18-02-DKG0	B18-02-GLG0	B18-02-FK00	B18-02-DK00	B18-02-GL00
	3/8	B18-03-FKG0	B18-03-DKG0	B18-03-GLG0	B18-03-FK00	B18-03-DK00	B18-03-GL00
	1/2	B18-04-FKG0	B18-04-DKG0	B18-04-GLG0	B18-04-FK00	B18-04-DK00	B18-04-GL00
Automatic Drain	1/4	B18-02-FGG0	B18-02-DGG0	B18-02-GHG0	B18-02-FG00	B18-02-DG00	B18-02-GH00
	3/8	B18-03-FGG0	B18-03-DGG0	B18-03-GHG0	B18-03-FG00	B18-03-DG00	B18-03-GH00
	1/2	B18-04-FGG0	B18-04-DGG0	B18-04-GHG0	B18-04-FG00	B18-04-DG00	B18-04-GH00

Options - To order an option supplied with the unit model, add the appropriate coded suffix letter in the designated position of the model number.



Filter / Regulator CB6



CB6-02-000

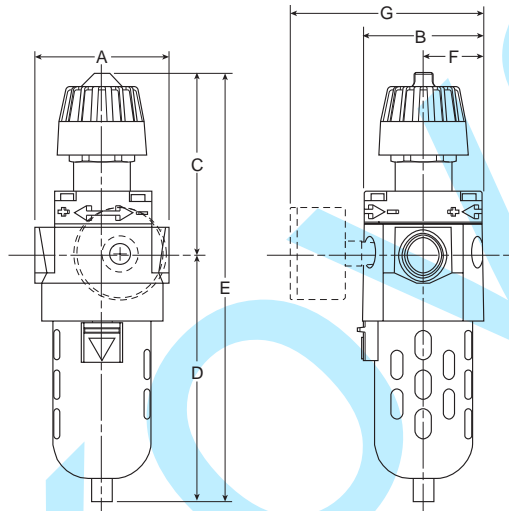
Features

- 5 Micron Filtration
- Balanced Valve
- Manual Flex Drain
- Integral Plastic Bowl / Bowl Guard
- Quick-Disconnect Bowl



WARNING

**Product rupture can cause serious injury.
Do not connect regulator to bottled gas.
Do not exceed maximum primary pressure rating.**



NOTE: 1.31" Dia. (33.3 mm) hole required for panel nut mounting.

Dimensions

Models	Inches (mm)	A	B	C	D	E	F	G
Standard Unit CB6-XX-000		3.00 (76)	2.64 (67)	3.95 (100)	5.43 (137.9)	9.38 (238)	1.34 (34)	4.18 (106)
Automatic Drain CB6-XX-F00		3.00 (76)	2.64 (67)	3.95 (100)	5.55 (140.9)	9.50 (241)	1.34 (34)	4.18 (106)
Metal Bowl CB6-XX-M00		3.00 (76)	2.64 (67)	3.95 (100)	6.05 (153.7)	10.00 (254)	1.34 (34)	4.18 (106)
Metal Bowl with Sight Gauge CB6-XX-G00		3.00 (76)	2.64 (67)	3.95 (100)	6.15 (156)	10.10 (256.5)	1.34 (34)	4.18 (106)

 = "Most Popular"

Specifications

Flow Capacity*	1/4	64.0 SCFM (30.2 dm ³ /s)
	3/8	70.0 SCFM (33.0 dm ³ /s)
	1/2	70.0 SCFM (33.0 dm ³ /s)
Adjusting Range Pressure	0 to 50 PSIG (0 to 3.5 bar)	
	0 to 125 PSIG (0 to 8.6 bar)	
Gauge Port (2 ea.)	NPT / BSPT-Rc	1/4
Maximum Supply Pressure	Plastic Bowl	150 PSIG (10.3 bar)
	Metal Bowl	200 PSIG (13.8 bar)
Operating Temperature	Plastic Bowl	32° to 125°F (0° to 52°C)
	Metal Bowl	32° to 150°F (0° to 65.5°C)
Port Size	NPT / BSPP-G	1/4, 3/8, 1/2
Standard Filtration	5 Micron	
Weight	2.4 lb. (1.1 kg)	

* Inlet pressure 100 PSIG (6.9 bar). Secondary pressure 90 PSIG (6.2 bar).

"F" Series Filters, Type "A" 5 Micron Elements: All Wilkerson Type "A" 5 micron elements **meet or exceed ISO Class 3** for maximum particle size and concentration of solid contaminants.

Materials of Construction

Body	Zinc	
Bonnet, Knob	PBT	
Bowls	Plastic Bowl	Polycarbonate
	Metal Bowl	Zinc
Diaphragm	Nitrile / Zinc	
Filter Element	Polyethylene	
Panel Nut	Acetal	
Seals	Plastic Bowl	Nitrile
	Metal Bowl	Fluorocarbon
Stem, Element Retainer and Deflector	Acetal	
Springs	Steel	
Valve Assembly	Brass / Nitrile	

CAUTION:

REGULATOR PRESSURE ADJUSTMENT – The working range of knob adjustment is designed to permit outlet pressures within their full range. Pressure adjustment beyond this range is also possible because the knob is not a limiting device. This is a common characteristic of most industrial regulators, and limiting devices may be obtained only by special design.

For best performance, regulated pressure should always be set by increasing the pressure up to the desired setting.

 = "Most Popular"

Replacement Bowl Kits

Metal Bowl –

- Automatic Float Drain.....FRP-95-950
 Brass Petcock Drain.....FRP-95-178

Metal Bowl / Sight Gauge, Brass Petcock Drain....GRP-95-133

Plastic Bowl, Flex Tip Drain.....FRP-95-017

Plastic Bowl / Bowl Guard –

- Automatic Float Drain.....FRP-95-015
 Flex Top Drain.....FRP-95-014

Replacement Element Kits

Type "A", 5 Micron w/ Nitrile Bowl O-Ring.....FRP-95-160

Replacement Kits

Diaphragm Assembly –

- Non-relieving.....RRP-96-216
 Self-relieving.....RRP-96-213

Spring, Regulating –

- 0 to 50 PSIG (0 to 3.4 bar) Blue Color.....RRP-95-222
 0 to 125 PSIG (0 to 8.5 bar) Silver Color.....RRP-95-224

Accessories

Automatic Mech. Drain, 1/8 NPT –

- Fluorocarbon.....GRP-95-981
 Nitrile.....GRP-95-973

Manual Flex Tip Drain.....FRP-95-610

Wall Mounting Bracket –

- Gauge Port Adapter, 1/4 NPT.....RRP-95-590
 L-Type.....GPA-95-012

Drain, Manual Override for

Auto Float Drain, 1/8 NPT.....GRP-96-000

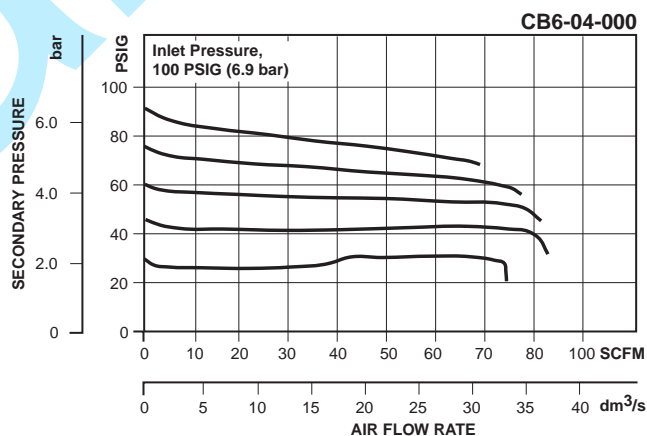
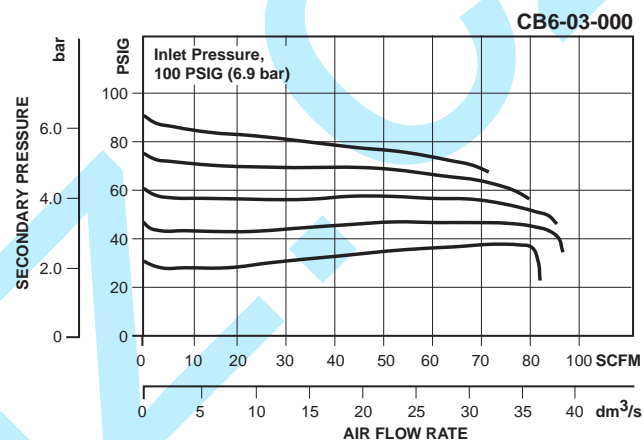
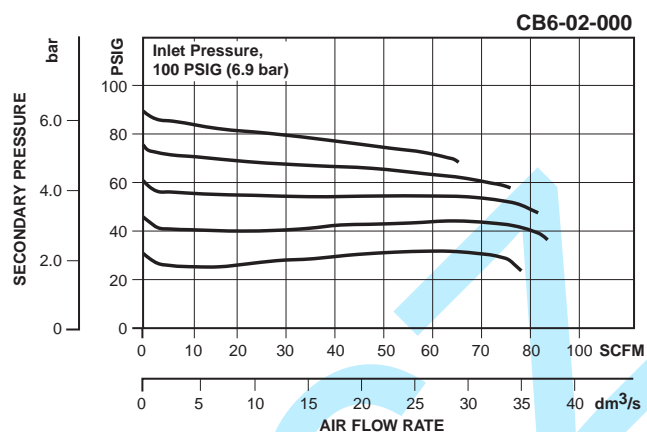
Gauge, Pressure, 2" Dial Face, 1/4 NPT CBM –

- 0 to 60 PSIG (0 to 4.1 bar).....K4520N14060
 0 to 160 PSIG (0 to 11.0 bar).....K4520N14160
 0 to 300 PSIG (0 to 21 bar).....K4520N14300

Panel Nut, Plastic.....GPA-95-032

Tamper Resistant Kit.....RPA-95-006

NOTE: Gauge not included, order separately by accessory number.



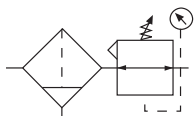
Ordering Information

Model Type	Port Size	Plastic Bowl / Bowl Guard 0 to 125 PSIG (0 to 8.6 bar)	Metal Bowl 0 to 125 PSIG (0 to 8.6 bar)	Metal Bowl w/ Sight Gauge 0 to 125 PSIG (0 to 8.6 bar)	Metal Bowl Low Pressure 0 to 50 PSIG (0 to 3.4 bar)
Manual Drain	1/4	CB6-02-000	CB6-02-M00	CB6-02-G00	CB6-02-LM0
	3/8	CB6-03-000	CB6-03-M00	CB6-03-G00	CB6-03-LM0
	1/2	CB6-04-000	CB6-04-M00	CB6-04-G00	CB6-04-LM0
Automatic Drain	1/4	CB6-02-F00	CB6-02-FM0	CB6-02-FG0	CB6-02-FLM
	3/8	CB6-03-F00	CB6-03-FM0	CB6-03-FG0	CB6-03-FLM
	1/2	CB6-04-F00	CB6-04-FM0	CB6-04-FG0	CB6-04-FLM

Options - To order an option supplied with the unit model, add the appropriate coded suffix letter in the designated position of the model number.

Precision Filter / Regulator

PC5 / PC6



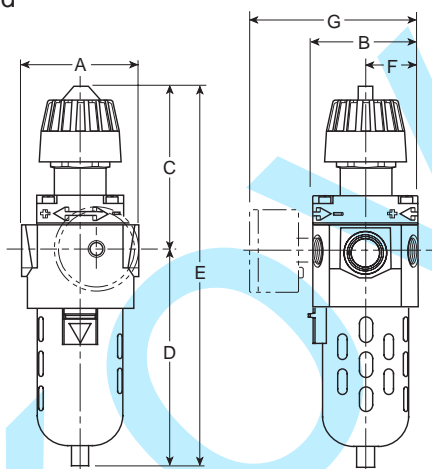
Precision Filter / Regulator

The PC5 / PC6 models are general purpose regulators specifically designed for applications that require reliable performance and accurate pressure control.

PC5 / PC6-02-000

Features

- **Stable Output** – Aspirator Design Minimizes “Droop” at Higher Flow Levels
- **Accuracy** – High Diaphragm-to-Valve-Area Ratio Combined with Unbalanced Valve Provides High Precision with Minimal Initial Pressure Droop
- **Quality Air** – 5 Micron Filtration for Superior Protection of Critical Downstream Equipment
- **Easy Maintenance** – May be Disassembled and Serviced without Removal from Air Line
- **Competitive** – Compact, Integral Filter / Regulator Can be Used Where Limited Space or Lower Cost is Required



NOTE: 1.31" Dia. (33.3 mm) hole required for panel nut mounting.

Dimensions

Models	Inches (mm)	A	B	C	D	E	F	G
Standard Unit PC5-XX-000 / PC6-XX-000		3.00 (76)	2.64 (67)	3.95 (100)	5.43 (137.9)	9.38 (238)	1.34 (34)	4.18 (106)
Automatic Drain PC5-XX-F00 / PC6-XX-F00		3.00 (76)	2.64 (67)	3.95 (100)	5.55 (140.9)	9.50 (241)	1.34 (34)	4.18 (106)
Metal Bowl PC5-XX-M00 / PC6-XX-M00		3.00 (76)	2.64 (67)	3.95 (100)	6.05 (153.7)	10.00 (254)	1.34 (34)	4.18 (106)
Automatic Drain PC5-XX-G00 / PC6-XX-G00		3.00 (76)	2.64 (67)	3.95 (100)	6.15 (156)	10.10 (256.5)	1.34 (34)	4.18 (106)

Specifications

Flow Capacity*	PC5	28.0 SCFM (13.2 dm ³ /s)
	PC6	19.0 SCFM (9.0 dm ³ /s)
Gauge Port (2 ea.)	NPT / BSPT-Rc	1/4
Maximum Supply Pressure	Plastic Bowl	150 PSIG (10.3 bar)
	Metal Bowl	200 PSIG (13.8 bar)
Port Size	NPT / BSPP-G	1/4, 3/8, 1/2
Operating Temperature	Plastic Bowl	32° to 125°F (0° to 52°C)
	Metal Bowl	32° to 150°F (0° to 65.5°C)
Weight		2.4 lb. (1.1 kg)

* Inlet pressure 100 PSIG (6.9 bar). Secondary pressure PC5, 15 PSIG (1.0 bar); PC6, 45 PSIG (3.1 bar).

“F” Series Filters, Type “A” 5 micron elements: All Wilkerson Type “A” 5 micron elements **meet or exceed ISO Class 3** for maximum particle size and concentration of solid contaminants.

Materials of Construction

Body		Zinc
Bonnet, Knob		PBT
Bowls	Plastic Bowl	Polycarbonate
	Metal Bowl	Zinc
Diaphragm		Nitrile / Zinc
Filter Element		Polypropylene
Panel Nut		Acetal
Seals	Plastic Bowl	Nitrile
	Metal Bowl	Fluorocarbon
Springs		Steel
Stem, Element Retainer and Deflector		Acetal
Valve Assembly		Brass / Nitrile

WARNING

**Product rupture can cause serious injury.
Do not connect regulator to bottled gas.
Do not exceed maximum primary pressure rating.**

CAUTION:

REGULATOR PRESSURE ADJUSTMENT – The working range of knob adjustment is designed to permit outlet pressures within their full range. Pressure adjustment beyond this range is also possible because the knob is not a limiting device. This is a common characteristic of most industrial regulators, and limiting devices may be obtained only by special design.

For best performance, regulated pressure should always be set by increasing the pressure up to the desired setting.

 = "Most Popular"

Replacement Bowl Kits

Metal Bowl –	
Automatic Drain	PRP-96-006
Manual Drain	PRP-95-070
Metal Bowl / Sight Gauge, Brass Petcock Drain	PRP-95-071
Plastic Bowl, FlexTip Drain	FRP-95-017
Plastic Bowl / Bowl Guard –	
Automatic Drain	FRP-95-015
FlexTip Drain	FRP-95-014

Replacement Element Kits

Type "A", 5 Micron	FRP-95-160
--------------------------	------------

Replacement Kits

Diaphragm Assembly –	
Non-relieving, Nitrile	PRP-95-055
Self-relieving, Nitrile	PRP-95-025
Spring, Regulating –	
0 to 15 PSIG (1 bar)	RRP-95-233
0 to 30 PSIG (2,1 bar)	RRP-95-916
0 to 50 PSIG (0 to 3,4 bar)	RRP-95-222
0 to 125 PSIG (0 to 8,5 bar)	RRP-95-224

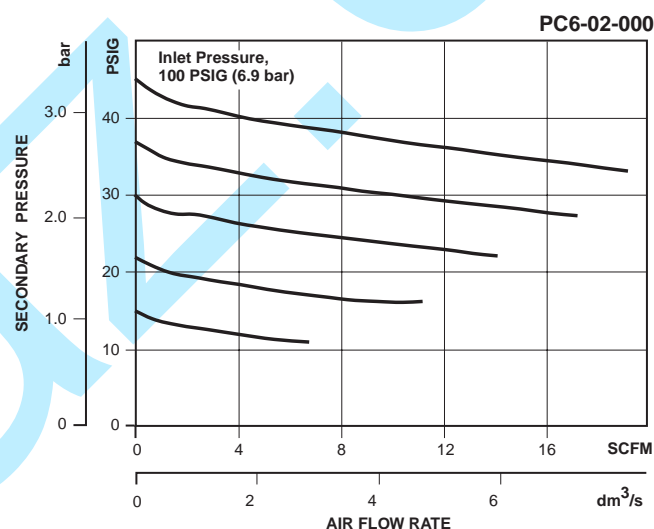
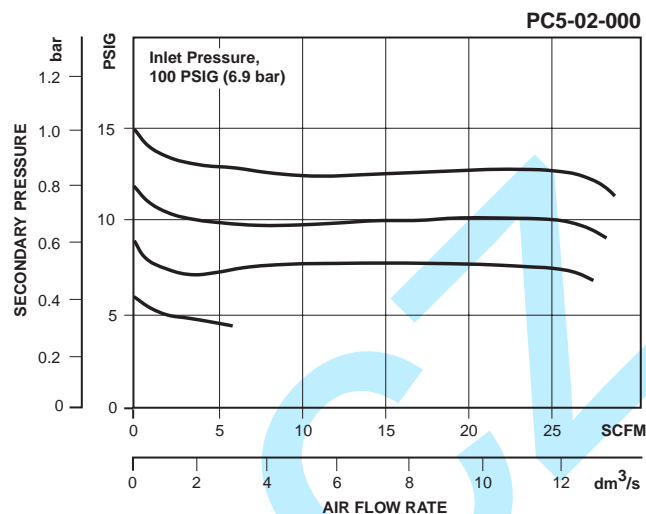
Accessories

Automatic Mechanical Drain	
1/8 NPT, Fluorocarbon	GRP-95-981
1/8 NPT, Nitrile	GRP-95-973
Drain, Manual Override for	
Auto Float Drain, 1/8 NPT	GRP-96-000
FlexTip Drain	FRP-95-610
Gauge, Pressure, 2" Dial Face, 1/4 NPT, CBM –	
0 to 30 PSIG (0 to 2,1 bar)	K4520N14030
0 to 60 PSIG (0 to 4 bar)	K4520N14060
0 to 120 PSIG (0 to 8,3 bar)	K4520N14160
Panel Nut, Plastic	GPA-95-032
Tamper Resistant Kit	RPA-95-006
Wall Mounting Bracket –	
Gauge Port Adapter, 1/4 NPT	RRP-95-590
L-Type w/Panel Mount Nut	GPA-95-011

Ordering Information

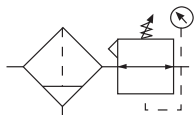
Model Type	Port Size	Standard Unit 0 to 15 PSIG (0 to 1 bar)	Standard Unit 0 to 50 PSIG (0 to 3.4 bar)	Automatic Mechanical Drain	Sight Gauge	High Pressure 0 to 125 PSIG (0 to 8.6 bar)	Low Pressure 0 to 30 PSIG (0 to 2.1 bar)	Metal Bowl	Fluorocarbon Seals
PC5 Relieving	1/4	PC5-02-000	—	—	—	—	—	—	—
	1/2	PC5-04-000	—	—	—	—	—	—	—
	3/8	PC5-03-000	—	—	—	—	—	—	—
PC6 Relieving	1/4	—	PC6-02-000	PC6-02-F00	PC6-02-G00	PC6-02-H00	PC6-02-L00	PC6-02-M00	PC6-02-V00
	3/8	—	PC6-03-000	PC6-03-F00	PC6-03-G00	PC6-03-H00	PC6-03-L00	PC6-03-M00	PC6-03-V00
	1/2	—	PC6-04-000	PC6-04-F00	PC6-04-G00	PC6-04-H00	PC6-04-L00	PC6-04-M00	PC6-04-V00
Non-relieving	1/4	—	PC6-02-N00	PC6-02-FN0	PC6-02-GN0	PC6-02-HN0	PC6-02-LN0	PC6-02-MN0	PC6-02-VN0
	3/8	—	PC6-03-N00	PC6-03-FN0	PC6-03-GN0	PC6-03-HN0	PC6-03-LN0	PC6-03-MN0	PC6-03-VN0
	1/2	—	PC6-04-N00	PC6-04-FN0	PC6-04-GN0	PC6-04-HN0	PC6-04-LN0	PC6-04-MN0	PC6-04-VN0

Options - To order an option supplied with the unit model, add the appropriate coded suffix letter in the designated position of the model number.



Filter / Regulator

B28

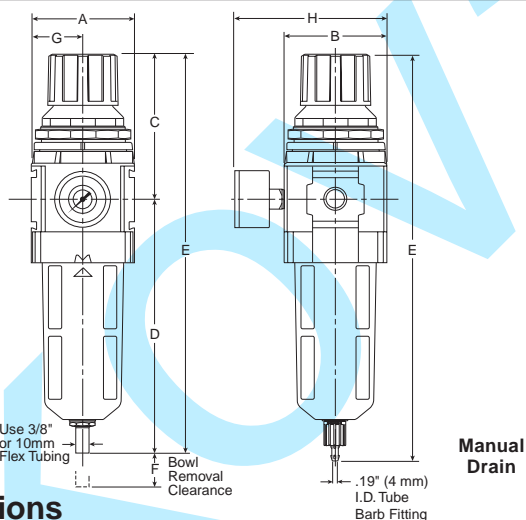

B28-03-FKG0

Features

- 5 Micron Filtration
- Balanced Valve Design
- Spring Loaded Diaphragm
- 3/4" NPT / BSPP-G Over-Ported
- Quick-Disconnect Bowl / Bowl Guard
- Light Weight
- High Flow Capacities

WARNING

**Product rupture can cause serious injury.
Do not connect regulator to bottled gas.
Do not exceed maximum primary pressure rating.**



Dimensions

Models	Inches (mm)	A	B	C	D	E	F	G	H
Standard Unit with Manual Drain B28-XX-FK00		2.90 (74)	2.90 (74)	4.09 (104)	7.35 (187)	11.44 (291)	2.00 (51)	1.44 (37)	4.27 (108)
Automatic Drain B28-XX-FG00		2.90 (74)	2.90 (74)	4.09 (104)	7.12 (181)	11.21 (285)	2.00 (51)	1.44 (37)	4.27 (108)
Metal Bowl with Sight Gauge / Manual Drain		2.90 (74)	3.23 (82)	4.09 (104)	7.35 (187)	11.44 (291)	2.00 (51)	1.44 (37)	4.27 (108)
Metal Bowl with Sight Gauge / Automatic Drain		2.90 (74)	3.23 (82)	4.09 (104)	7.12 (181)	11.21 (285)	2.00 (51)	1.44 (37)	4.27 (108)

Specifications

Flow Capacity*	3/8	140 SCFM (66.1 dm ³ /s)
	1/2	165 SCFM (77.9 dm ³ /s)
	3/4	175 SCFM (82.6 dm ³ /s)
Adjusting Range Pressure		0 to 30 PSIG (0 to 2.1 bar)
		0 to 60 PSIG (0 to 4.1 bar)
		0 to 125 PSIG (0 to 8.6 bar)
		0 to 250 PSIG (0 to 17.2 bar)
Gauge Port (2 ea.)	NPT / BSPP-G	1/4
Maximum Supply Pressure	Plastic Bowl	150 PSIG (10.3 bar)
	Metal Bowl	250 PSIG (17.2 bar)
Operating Temperature	Plastic Bowl	32° to 125°F (0° to 52°C)
	Metal Bowl	32° to 150°F (0° to 65.5°C)
Port Size	NPT / BSPP-G	3/8, 1/2, 3/4
Standard Filtration		5 Micron
Weight		2.45 lb. (1.1 kg)

*Inlet pressure 100 PSIG (6.9 bar). Secondary pressure 90 PSIG (6.2 bar).

"F" Series Filters, Type "A" 5 micron elements: All Wilkerson Type "A" 5 micron elements **meet or exceed ISO Class 3** for maximum particle size and concentration of solid contaminants.

Materials of Construction

Adjustment Knob	Acetal	
Body	Zinc	
Body Cap	ABS	
Bowls	Plastic Bowl	Polycarbonate
	Metal Bowl	Aluminum
Diaphragm Assembly	Nitrile / Zinc	
Element Retainer / Baffle	Acetal	
Filter Element	Sintered Polyethylene	
Panel Nut	Acetal	
Seals	Plastic Bowl	Nitrile
	Metal Bowl	Nitrile
Sight Gauge	Metal Bowl	Polyamide (Nylon)
Springs	Main Regulating / Valve	Steel / S.S.
Valve Assembly	Brass / Nitrile	

CAUTION:

REGULATOR PRESSURE ADJUSTMENT – The working range of knob adjustment is designed to permit outlet pressures within their full range. Pressure adjustment beyond this range is also possible because the knob is not a limiting device. This is a common characteristic of most industrial regulators, and limiting devices may be obtained only by special design.

For best performance, regulated pressure should always be set by increasing the pressure up to the desired setting.

 = "Most Popular"

Replacement Bowl Kits

Metal Bowl –

- Sight Gauge, Automatic Drain.....GRP-96-645
Sight Gauge, Manual Drain.....GRP-96-644

Plastic Bowl –

- Bowl Guard, Automatic Drain.....GRP-96-643
Bowl Guard, Manual Drain.....GRP-96-642
Bowl Guard, No DrainGRP-96-652

Replacement Element Kits

- Type“ A”, 5 Micron.....FRP-96-653
Element, Deflector, Retainer kit.....FRP-96-283

Replacement Kits

- Adjusting Knob.....RRP-16-341-000
Diaphragm Assembly –
Non-relievingRRP-96-987
RelievingRRP-96-986
Spring, Regulating –
0 to 30 PSIG (0 to 2.1 bar).....RRP-96-163
0 to 60 PSIG (0 to 4.1 bar).....RRP-96-164
0 to 125 PSIG (0 to 8.6 bar).....RRP-96-165
0 to 250 PSIG (0 to 17.2 bar).....RRP-96-166
Valve Assembly.....RRP-96-049

Accessories

Automatic Drain –

- FluorocarbonGRP-95-981
Nitrile.....GRP-95-973

Manual Drain.....GRP-96-685

Panel Mount Nut –

- Aluminum.....RRP-96-674
PlasticRRP-96-676

Pressure Gauge –

- 0 to 30 PSIG, 1-1/2" Dial Face, 1/4 NPT CBM ..K4515N14030
0 to 60 PSIG, 1-1/2" Dial Face, 1/4 NPT CBM ..K4515N14060
0 to 160 PSIG, 1-1/2" Dial Face, 1/4 NPT CBM ..K4515N14160
0 to 300 PSIG, 1-1/2" Dial Face, 1/4 NPT CBM ..K4515N14300
0 to 2.0 bar, 1-1/2" Dial Face, G 1/4 CBMK4515G14030
0 to 4.1 bar, 1-1/2" Dial Face, G 1/4 CBM.....K4515G14060
0 to 11 bar, 1-1/2" Dial Face, G 1/4 CBM.....K4515G14160
0 to 21 bar, 1-1/2" Dial Face, G 1/4 CBMK4515G14290

Tamper Resistant Kit.....RRP-96-672

Sight Gauge Kit.....GRP-96-825

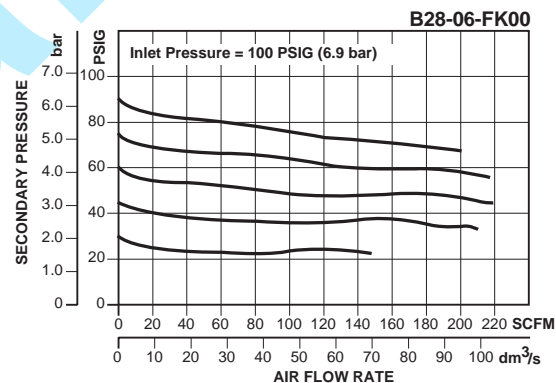
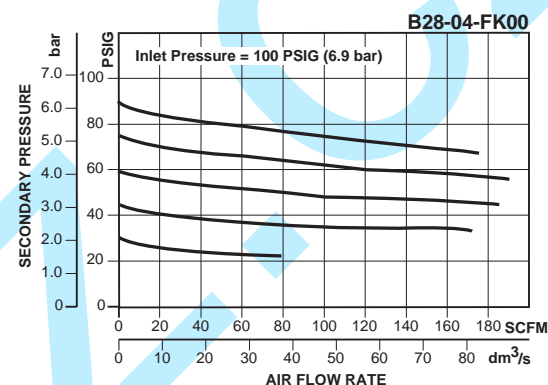
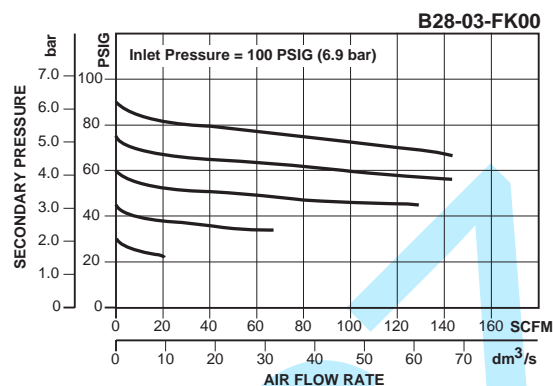
Wall Mounting Bracket –

- L-Type (Body).....GPA-96-605
L-Type (Bonnet).....GPA-96-607
T-TypeGPA-96-602

Ordering Information

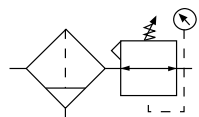
Model Type	Port Size	Plastic Bowl / Bowl Guard With Gauge 5 to 125 PSIG (0.4 to 8.6 bar)	Plastic Bowl / Bowl Guard With Gauge 3 to 60 PSIG (0.2 to 4.1 bar)	Metal Bowl / Sight Gauge With Gauge 10 to 250 PSIG (0.7 to 17.2 bar)	Plastic Bowl / Bowl Guard Without Gauge 5 to 125 PSIG (0.4 to 8.6 bar)	Plastic Bowl / Bowl Guard Without Gauge 3 to 60 PSIG (0.2 to 4.1 bar)	Metal Bowl / Sight Gauge Without Gauge 10 to 250 PSIG (0.7 to 17.2 bar)
Manual Drain	3/8	B28-03-FKG0	B28-03-DKG0	B28-03-GLG0	B28-03-FK00	B28-03-DK00	B28-03-GL00
	1/2	B28-04-FKG0	B28-04-DKG0	B28-04-GLG0	B28-04-FK00	B28-04-DK00	B28-04-GL00
	3/4	B28-06-FKG0	B28-06-DKG0	B28-06-GLG0	B28-06-FK00	B28-06-DK00	B28-06-GL00
Automatic Drain	3/8	B28-03-FGG0	B28-03-DGG0	B28-03-GHG0	B28-03-FG00	B28-03-DG00	B28-03-GH00
	1/2	B28-04-FGG0	B28-04-DGG0	B28-04-GHG0	B28-04-FG00	B28-04-DG00	B28-04-GH00
	3/4	B28-06-FGG0	B28-06-DGG0	B28-06-GHG0	B28-06-FG00	B28-06-DG00	B28-06-GH00

Options - To order an option supplied with the unit model, add the appropriate coded suffix letter in the designated position of the model number.



Filter / Regulator

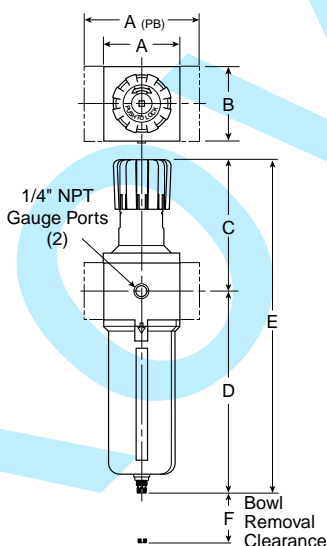
B39



B39-06-FL00

Features

- 5 Micron Filtration
- Balanced Valve Design
- Solid Control Piston for Extended Life
- 3/4" and 1" NPT Ports
- Port Blocks Available for BSPP Thread and 1-1/2" Port
- Quick Disconnect Bowl
- High Flow Capacities



Dimensions

Models	Inches (mm)	A	A(PB)	B	C	D†	E†	F
Standard Unit B39-XX-FL00		3.62 (92)	5.91 (150)	3.62 (92)	6.38 (162)	9.57 (243)	15.95 (405)	4.92 (125)

† With Manual or Internal Auto Drain

Specifications

Flow Capacity*	3/4	250 SCFM (118 dm ³ /s)
	1	250 SCFM (118 dm ³ /s)
Adjusting Range Pressure	0 to 125 PSIG (0 to 8.6 bar)	
Gauge Port	NPT	1/4
Maximum Supply Pressure	250 PSIG (17.2 bar)	
Operating Temperature	32° to 175°F (0° to 80°C)	
Port Size†	NPT	3/4, 1
Standard Filtration	5 Micron	
Weight	5.3 lb. (2.4 kg)	

* Inlet pressure 100 PSIG (6.9 bar). Secondary pressure 90 PSIG (6.2 bar).

† Port blocks available for BSPP thread & 1-1/2" port.

Type "A" 5 micron elements: All Wilkerson Type "A" 5 micron elements **meet or exceed ISO Class 3** for maximum particle size and concentration of solid contaminants.

Materials of Construction

Body & Bowl	Aluminum
Element Retainer, Deflector and Baffle	Plastic
Filter Element	Sintered Polyethylene
Piston	Plastic
Seals	Nitrile
Sight Gauge	Polyamide (Nylon)
Springs	Steel
Valve Assembly	Brass / Nitrile

WARNING

**Product rupture can cause serious injury.
Do not connect regulator to bottled gas.
Do not exceed maximum primary pressure rating.**

CAUTION:

REGULATOR PRESSURE ADJUSTMENT – The working range of knob adjustment is designed to permit outlet pressures within their full range. Pressure adjustment beyond this range is also possible because the knob is not a limiting device. This is a common characteristic of most industrial regulators, and limiting devices may be obtained only by special design.

For best performance, regulated pressure should always be set by increasing the pressure up to the desired setting.

 = "Most Popular"

Replacement Bowl Kits

Metal Bowl –

Sight Gauge / Internal Auto Drain P3NKA00BSA
Sight Gauge / Manual Drain.....P3NKA00BSM

Replacement Element Kits

40 Micron P3NKA00ESG
5 Micron P3NKA00ESE
Activated Charcoal P3NKA00ESA

Replacement Kits

Service Kit –

Relieving P3NKA00RR
Non-relieving P3NKA00RN

Springs –

1 to 60 PSIG Range C10A1304
2 to 125 PSIG Range C10A1308
5 to 250 PSIG RangeC10A1317

Accessories

Bowl Latch Kit C11A33

Control KnobP3NKA00PN

Drain Kit –

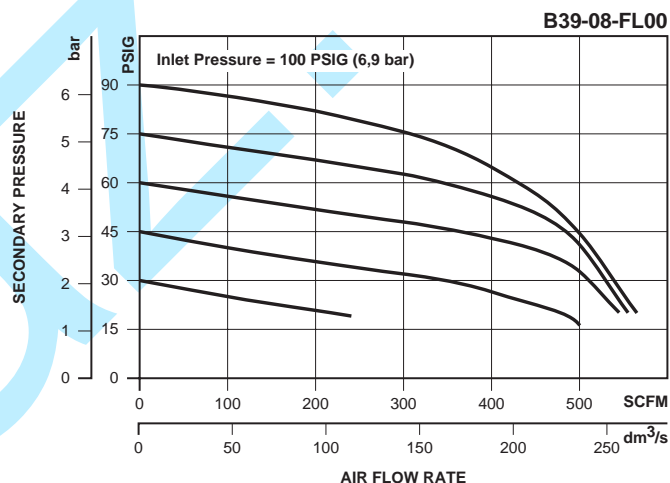
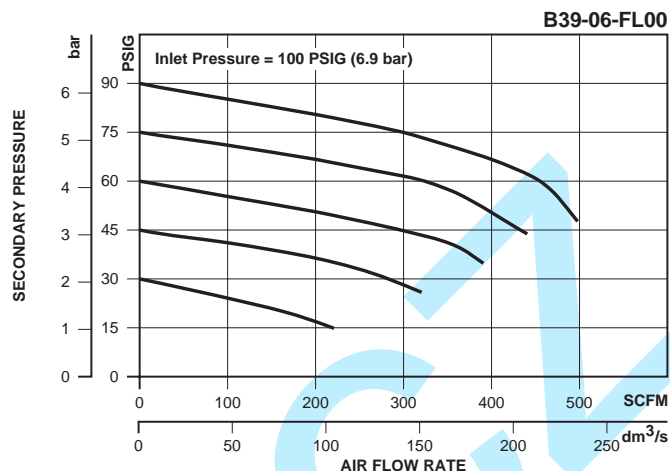
Internal Auto DrainPS506
Manual Drain PS512

Gauges –

60 PSIG (0 to 4 bar)K4520N14060
160 PSIG (0 to 11 bar)..... K4520N14160
300 PSIG (0 to 20 bar)K4520N14300

Mounting Bracket Kit P3NKA00MW

Sight Gauge KitP3NKA00PE



Ordering Information

Model Type	Port Size	Metal Bowl / Sight Gauge Without Gauge 2 to 125 PSIG (0.4 to 8.6 bar)	Metal Bowl / Sight Gauge With Gauge 2 to 125 PSIG (0.4 to 8.6 bar)
Manual Drain	3/4	B39-06-FL00	B39-06-FLG0
	1	B39-08-FL00	B39-08-FLG0

Options - To order an option supplied with the unit model, add the appropriate coded suffix letter in the designated position of the model number.