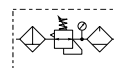


Popular Combinations: Inlet pressure 10 bar (145 psig), Secondary pressure 6.3 bar (91.3 psig), 1 bar (14.5 psig) pressure drop.



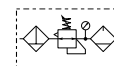
Filter + Regulator + Lubricator Combinations, Poly bowl
5 micron element, 8 bar (116 psig) regulator + gauge and wall mounting brackets



Port size	Flow	Manual drain	Weight	Pulse drain	Weight
1/4"	13 dm³/s 27 (scfm)	P31CB12GEMNTLNW	0.46 kg (1.01 lbs)	P31CB12GEBNTLNW	0.46 kg (1.01 lbs)



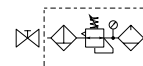
Filter/Regulator + Lubricator Combinations, Poly bowl
5 micron element, 8 bar (116 psig) regulator + gauge and wall mounting brackets



Port size	Flow	Manual drain	Weight	Pulse drain	Weight
1/4"	14 dm³/s 28 (scfm)	P31CA12GEMNTLNW	0.35 kg (0.77 lbs)	P31CA12GEBNTLNW	0.35 kg (0.77 lbs)



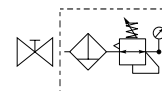
Ball Valve + Filter/Regulator + Lubricator Combinations, Poly bowl
5 micron element, 8 bar (116 psig) regulator + gauge and wall mounting brackets



Port size	Flow	Manual drain	Weight	Pulse drain	Weight
1/4"	14 dm³/s 28 (scfm)	P31QA12GEMNTLNW	0.35 kg (0.77 lbs)	P31QA12GEBNTLNW	0.35 kg (0.77 lbs)



Ball Valve + Filter/Regulator Combinations + Poly bowl
5 micron element, 8 bar Regulator + Gauge and Wall Mounting Brackets



Port size	Flow	Manual drain	Weight	Pulse drain	Weight
1/4"	14 dm³/s 28 (scfm)	P31QN12GEMNTW	0.4 kg (0.88 lbs)	P31QN12GEBNTW	0.4 kg (0.88 lbs)

P 3 1

Combination	
Combination	C
Shut off + Combi ¹	Q

Thread type	
BSPP	1
NPT	9

Port size	
1/4	2

Drain type	
Manual drain	M
Pulse drain	B

E

N

L N

W

Combination type	
F/R+L	A
F+R+L	B
F/R	N

Bowl type	
Poly bowl with bowl guard	G
Metal bowl without sight glass	M

Adjustment range	
With square gauge	
2 bar *	V
4 bar	S
8 bar **	T
Without gauge	
2 bar	Y
4 bar	L
8 bar	N
16 bar	H

Add only for options with Lubricator

Note: All bowl types are the same for each component

Example: If a "G" is specified for a F+L, both units would get a poly bowl with bowl guard.

* Unit comes with 0-4 bar, gauge respectively

** Unit comes with 0-10 bar, gauge respectively

¹ Option not available with F+R+L
Bar gauges fitted to BSPP
PSI gauges fitted to NPT