

# Pressure Regulators

Parker Legris pressure regulators **stabilise at the maximum determined value** the pressure delivered to the pneumatic equipment, whatever the fluctuations of the pressure upstream.

## Product Advantages

- Ergonomics

Easy adjustment of the output pressure through the knurled screw  
Lockable adjustment possible  
Output pressure adjustment options marked on the screw
- Energy Savings

Setting of the optimum pressure enables the equipment to function correctly  
Installation in a manifold allows optimum output pressures to be delivered to specific parts of the circuit  
Designed for applications where cylinder force needs to be controlled: marking, sleeving, crimping cylinders etc.



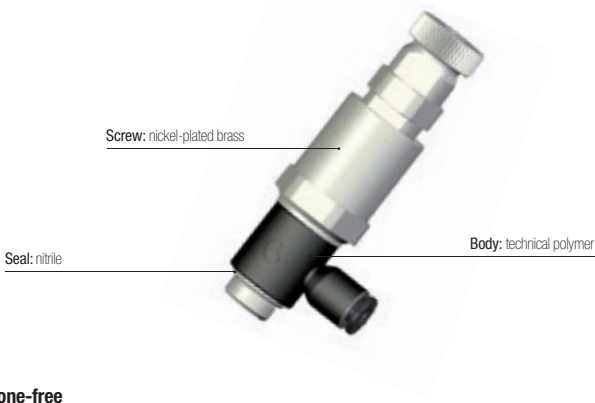
Applications

- Robotics
- Textile
- Semi-Conductors
- Packaging
- Pneumatics

## Technical Characteristics

Compatible Fluids	Compressed air			
Working Pressure	Upstream pressure: 1 to 16 bar Downstream pressure: 1 to 8 bar			
Working Temperature	-10°C to +70°C			
Max. Tightening Torques	Threads	G1/8	G1/4	G3/8
	daN.m	0.4	0.5	0.6

### Component Materials



Silicone-free

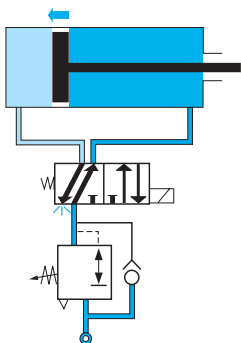
### Regulations

DI: 2002/95/EC (RoHS)  
RG: 1907/2006 (REACH)  
DI: 97/23/EC (PED)

## Operation

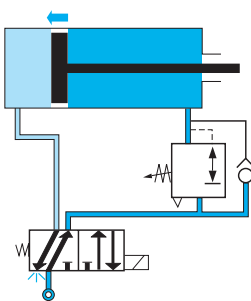
### Mounting Upstream of the Control Valve

Adjustment of the piston feed pressure in both directions

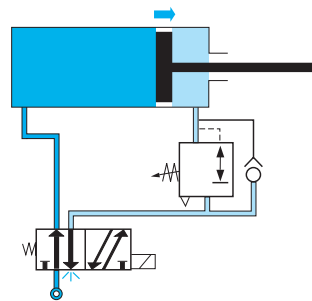


### Mounting Downstream of the Control Valve

Phase 1: adjustment of the piston speed in a single direction



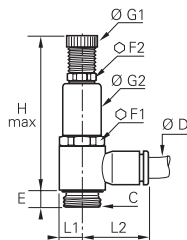
Phase 2: in return direction, pressure is supplied through the control valve



# Pressure Regulators

## 7300 Pressure Regulator, Male BSPP Thread

Technical polymer, nickel-plated brass, NBR



ØD	C		E	F1	F2	G1	G2	H max	L1	L2	Kg
4	G1/8	7300 04 10	4.5	17	13	14	17	65	7	18.5	0.047
	G1/8	7300 06 10	4.5	17	13	14	17	65	7	20	0.047
6	G1/4	7300 06 13	7.5	17	13	14	17	74.5	9.5	22	0.065
	G1/8	7300 08 10	4.5	17	13	14	17	65	7	25	0.048
8	G1/4	7300 08 13	7.5	17	13	14	17	74.5	9.5	27	0.066
	G3/8	7300 08 17	8.5	22	17	18.5	22	84	11.5	28.5	0.122
10	G1/4	7300 10 13	7.5	17	13	14	17	74.5	9.5	29	0.067
	G3/8	7300 10 17	8.5	22	17	18.5	22	84	11.5	30.5	0.122

### Flow Characteristics at 7 bar (Nl/min)

