

Vacuum Accessories







Convum Filters 4-5

Convum Silencers 6

Silencer (Flow Thru) 7

ASN Series Air Line Mufflers 8



VF & VFL



Always filtrate the vacuum system to protect the components from damaging particles absorbed from the environment. Elements should be replaced periodically to prevent slower response and overall performance of the system.

Spare Parts - Filter Elements

Item	For Filter
VF-2E	VF-2
VF-3E	VF-3
VF-5E	VF-5
VF-6E	VF-6
VFL-E	VFL-44, 66
VFL-88E	VFL-88
VFL-46H	Mounting Bracket for VFL-44, 66, 88
VF-3K	Cover, O-ring for VF-3, VF-5, VF-6
VFL-44K	Housing O-ring Kit for VFL-44
VFL-66K	Housing O-ring Kit for VFL-66
VFL-88K	Housing O-rings Kit for VFL-88

Part Numbers

Item	Application	Male Connection
VF-2G	CV-05, CV-10, MCA-05	G1/8"
VF-3G	CV-05, CV-10, MCA-05	G1/8"
VF-5G	CV-15, MCA-10/13	G1/4"
VF-6G	CV-20/25/30	G3/8"
VFL-44	General Use	4mm - Tube
VFL-66	General Use	6mm - Tube
VFL-88	General Use	8mm - Tube

Specifications

Media	Non-Corrosive Air
Operating Vacuum	0 to 28 inHg
Maximum Pressure	60 PSI
Operating Temperature	32 to 140°F
Filtration	120 µm (VF-2); 130 µm (VF-3, VF-5, VF-6); 37 µm (MC2-F, CVR-2F); 130 µm (CVK-F)

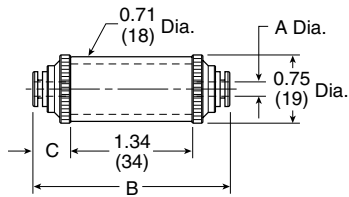
Materials

Item	Material Housing	Material Element	Weight (oz.)
VF-2G	Aluminum	Acrylic, Stainless Steel	1.54
VF-3G	Aluminum	PC, Polyvinyl	3.10
VF-5G	Aluminum	PC, Polyvinyl	5.15
VF-6G	Aluminum	PC, Polyvinyl	8.25
VFL-44	Poly-Carbonate	PC, Polyvinyl	0.67
VFL-66	Poly-Carbonate	PC, Polyvinyl	0.74
VFL-88	Poly-Carbonate	PC, Polyvinyl	0.81



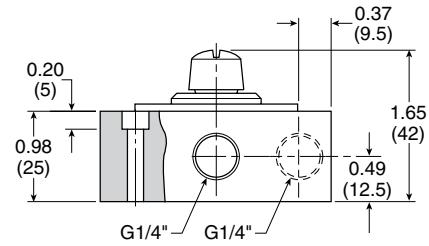
Dimensions

VFL Series

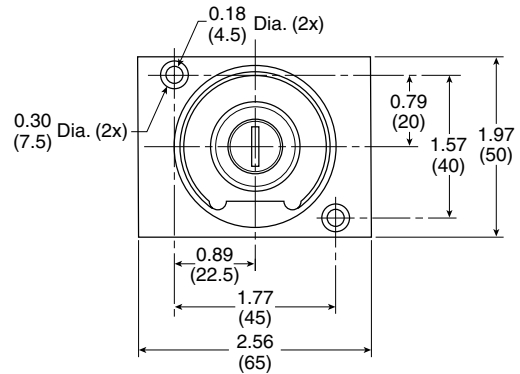
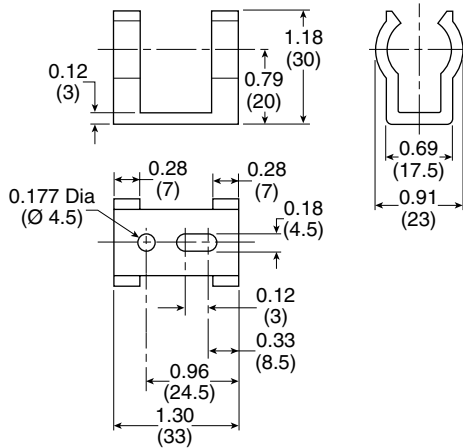


Item	A	B	C
VFL-44	0.16 (4)	2.17 (55)	0.41 (10.5)
VFL-66	0.24 (6)	2.28 (58)	0.47 (12)
VFL-88	0.31 (8)	2.44 (62)	0.55 (14)

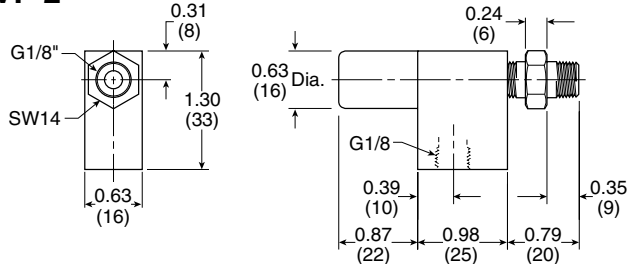
VF-5



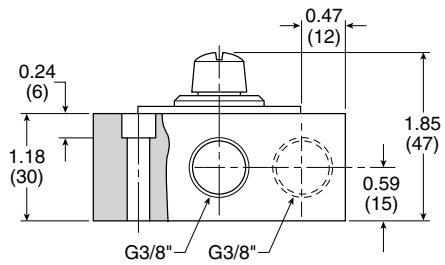
VFL-46H Mtg. Bracket



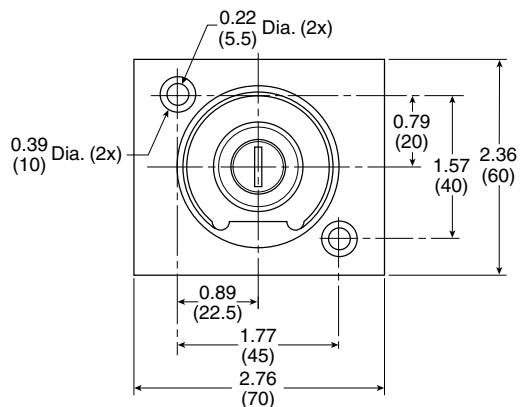
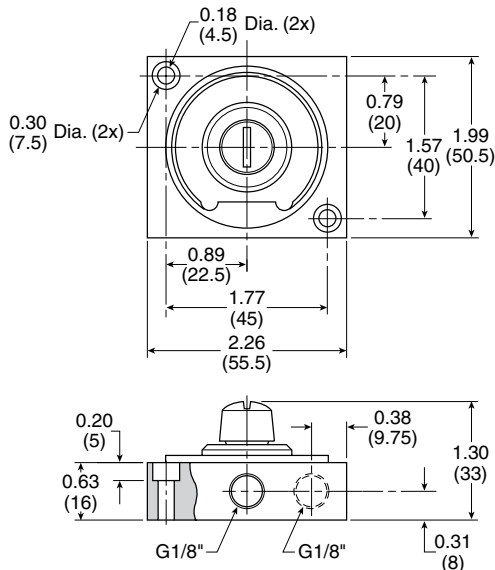
VF-2



VF-6



VF-3





Silencers

Protect the environment against harmful noise levels with quality silencers.



Specifications

Media	Non-Corrosive Air
Maximum Pressure	128 PSI
Operating Temperature	41 to 132°F
Silencing Effect	20 dB

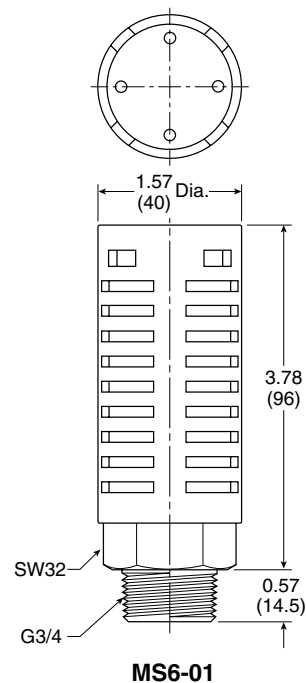
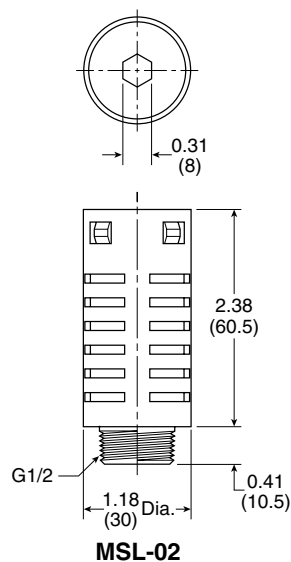
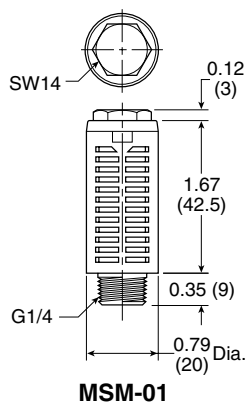
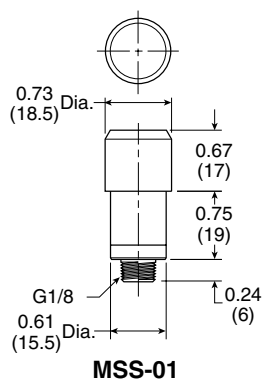
Part Numbers

Item	For Generator Series	Male Connection
MSS-01	CV-05, CV-10, MCA-05	G1/8"
MSS-02	CV-05, CV-10, MCA-05	G1/8"
MSM-01	CV-15, MCA-10/13	G1/4"
MSL-02	CV-20	G1/2"
MS6-01	CV-25, CV-30	G3/4"

Materials

Item	Material Housing	Material Element	Media	Weight (oz.)
MSS-01	Polyacetal	Felt, Urethane	Air	0.17
MSS-02	Polyacetal	Stainless Steel	Oil	0.17
MSM-01	Polyurethane	Felt	Air	0.24
MSL-02	Nylon	Vinyl	Air	0.88
MS6-01	Nylon	Polyvinyl Forma	Air	2.01

Dimensions





SIS-001



Protect the environment against harmful noise levels with quality silencers.

Flow thru silencer dampens noise generated by vacuum generators and allows particles exhausted by the generator to flow thru the open end of the silencer.

Can be added to CV-25 Series Vacuum Generator.

Specifications

Media	Non-Corrosive Air
Maximum Pressure	128 PSI
Operating Temperature	41 to 132°F
Silencing Effect	20 dB

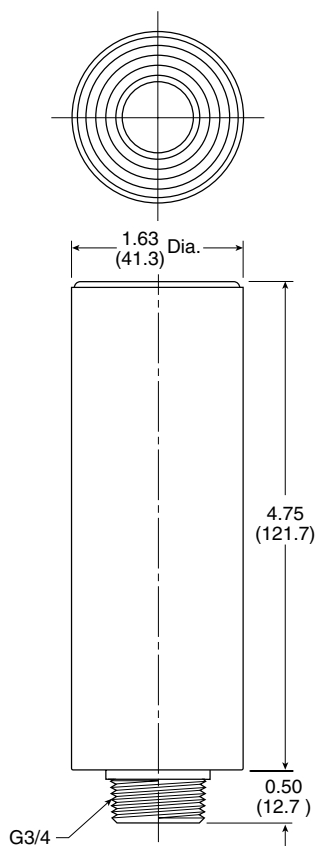
Part Number

Item	For Generator Series	Male Connection
SIS-001	CH Series	G3/4"

Materials

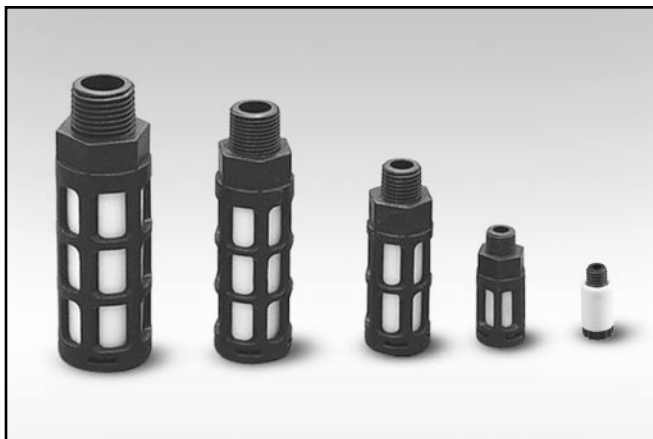
Item	Material Housing	Material Element	Media	Weight (oz.)
SIS-001	Polyacetal	Felt, Urethane	Air	0.17

Dimensions





ASN



Application

The plastic silencer is designed to give excellent noise reduction with a minimum effect on air efficiency.

The "Trimline" design allows for locating the silencer in the tightest places without extra plumbing or fittings.

Fits directly into the exhaust port of most commercial valves. Open surface area of element allows for rapid discharge of air without undesirable back pressure.

Features

- Compact
- Lightweight
- Easy to install
- Excellent noise reduction
- Protects components from contamination
- NPT & BSPT threads available

Specifications

Pressure Rating:

0 to 150 PSIG

(0 to 10 bar, 0 to 1034 kPa)

Temperature Rating:

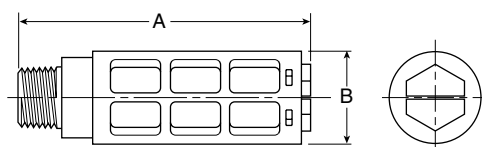
14°F to 140°F (-10°C to 60°C)

Materials

BodyAcetal (Plastic)

Element Polyethylene

Dimensions



Thread Size	Part Number		A	B	Maximum Flow (SCFM) 100 PSIG Inlet	Sound Pressure Level (dBA)	
	NPT	BSPT				20 PSIG Inlet	100 PSIG Inlet
M5	AS-5		0.43 (11)	0.32 (8)	15	69	79
1/8"	ASN-6	AS-6	1.57 (40)	0.63 (16)	51	69	81
1/4"	ASN-8	AS-8	2.56 (65)	0.83 (21)	124	67	84
3/8"	ASN-10	AS-10	3.35 (85)	0.98 (25)	247	83	98
1/2"	ASN-15	AS-15	3.74 (95)	1.18 (30)	370	69	96

inches (mm)